

INTELLIGENT INVESTING

DAILY NEWSLETTER

STOCK MARKETS, CRYPTOS, GOLD, MINERS & OIL
ETF, CRYPTO & MAGNIFICENT 7+ TRADE ALERTS



BY DR. ARNOU TER SCHURE & ASSOCIATES, 06/12/2026

THIS IS A WORKING DOCUMENT. ONCE THE LINK HAS BEEN EMAILED OUT, YOU CAN CHECK BACK AT ANY TIME USING THAT LINK TO SEE IF IT HAS BEEN UPDATED BY CHECKING THE TIMESTAMP: **VERSION 3,**
LAST UPDATED ON 06/13 AT 7:55 PM PST. FINAL VERSION.

TABLE OF CONTENTS

| | |
|---|--------------|
| STOCKMARKETS | III |
| DOW | III |
| SOX | IV |
| SP500 | V |
| NDX | VI |
| SMALL | VII |
| MARKET BREADTH | VIII |
| CRYPTO CURRENCIES & MINERS | IX |
| BTC | IX |
| ETH | X |
| RIOT | XI |
| GOLD, MINERS & OIL | XII |
| GDX | XII |
| GOLD | XIII |
| BRENT/WTIC | XIV |
| ETF TRADE ALERTS | XV |
| MAGNIFICENT 7+ TRADE ALERTS | XVI |
| CRYPTO TRADE ALERTS | XVII |
| BACKTESTED TRADING SYSTEM PERFORMANCES | XVIII |
| REFERAL PROGRAM | XIX |

STOCKMARKET

DOW Outlook: Long-term (years) BULLISH. Intermediate term (months) BEARISH. Mid-term (weeks) NEUTRAL. Short-term (days) BULLISH

WAVE LABEL KEY

| | | | |
|--|---|--|-------------------------------------|
| [W-3] Major Corrective Wave | [W-c] Ending diagonal wave | [W-5] Minor Corrective/Impulse wave | \$52,000+ Fib target zone |
|--|---|--|-------------------------------------|

CURRENT WAVE POSITION

W-4 has likely bottomed in the ideal target zone, and **W-5** is underway. As long as THIS WEEK's low hold, we can allow for that \$52K target

Our preference remains for a final **W-5** to that lovely \$52K target, while **W-4** likely bottomed this week. Below \$49,000, odds increase the larger **W-3** has topped.

WARNING LEVELS: percentages (%) indicate the chance the uptrend is over.

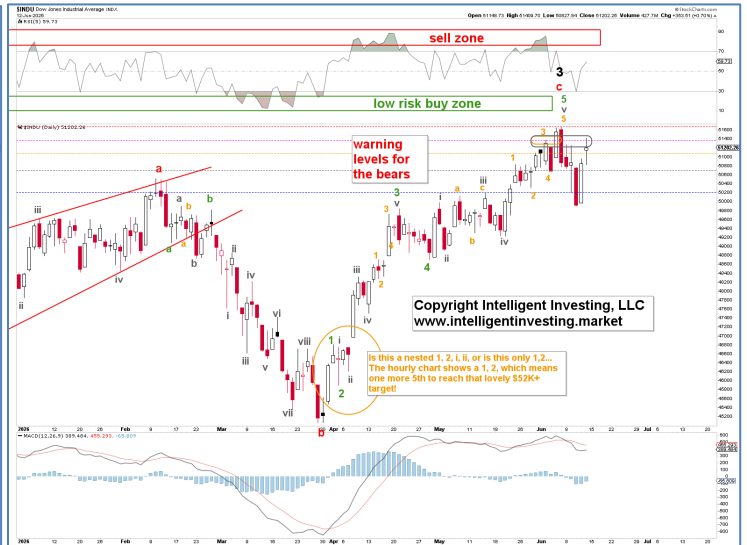
| | | | | |
|--|---|--|---|---|
| Radar lock (20%) \$51,369 | Shot across the bow (40%) \$50,986 | 1st hit Caution (60%) \$50,687 | 2nd hit critical (80%) \$50,314 | 3rd hit, ship sinks (100%) \$49,697 |
|--|---|--|---|---|

Key Finding: We can consider **W-4** complete, having subdivided into a double zigzag. 4th waves typically retrace 23.6-38.2% of the prior same-degree 3rd wave (green box in the 1st chart), and the index did just that, rallying out of it. Thus, W-5 should be underway, while acknowledging that below this week's low the odds increase the larger **W-3** has topped.

PREFERRED



ALTERNATE



SOX Outlook: Long-term (years) BULLISH. Intermediate term (months) BEARISH. Mid-term (weeks) BEARISH. Short-term (days) BULLISH.

WAVE LABEL KEY

| | | | |
|--|---------------------------------------|--|--|
| [W-iv] Intermediate Corrective wave | [W-b/2] Minor Corrective | [W-iii/iv] Minor Impulse wave | \$13,700-900 Fib target zone |
|--|---------------------------------------|--|--|

CURRENT WAVE POSITION

We continue to keep it very simple as things remain on track. Namely, so far, the index has done essentially what we thought it would on Wednesday: Subdividing into

- **W-a** to ideally \$12,630-890; **REACHED \$12,870** yesterday.
- **W-b** to \$12,000-365; **REACHED \$ 12,157** yesterday.
- and **W-c** \$13,100-470. **UNDERWAY (TARGET ADJUSTED -SEE ABOVE- BASED ON ADDITIONAL DATA)**

The **W-c** is subdividing into five smaller (gray) waves, and W-iii is about to end/may have ended. A W-iv and W-v to \$13,100+/-100 and \$13,800+/-100 are still anticipated.

WARNING LEVELS: percentages (%) indicate the chance the downtrend is over.

| | | | | |
|--|---|--|---|---|
| Radar lock (20%) \$12,548 | Shot across the bow (40%) \$13,041 | 1st hit Caution (60%) \$13,400 | 2nd hit critical (80%) \$13,726 | 3rd hit, ship sinks (100%) \$13,998 |
|--|---|--|---|---|

Key Finding: The index is now in W-iii of W-c of W-b to ideally \$13,470-620. The ultimate B-wave target can be \$13,730-895, but we'll take it day by day.



SPX Outlook: Long-term (years) BULLISH. Intermediate term (months) BEARISH. Mid-term (weeks) BEARISH. Short-term (days) NEUTRAL.

WAVE LABEL KEY

| | | | | | |
|--|---|--|--|---|---|
| [W-4] Major Corrective Wave | [W-a] Intermediate Corrective wave | [W-b/ii] Minute Corrective wave | [W-c] Micro Corrective wave | [W-iii/iv/v] Nano Impulse wave | \$7,475-7,530 Fib target zone |
|--|---|--|--|---|---|

CURRENT WAVE POSITION

We continue to keep it very simple as things remain on track. Namely, so far, the index has done essentially what we thought it would on Wednesday: Subdividing into

- **W-a** to ideally \$7,380-7,430; **REACHED \$7,396** yesterday
- **W-b** to \$7,300+/-25; **REACHED \$7,257** today
- and **W-c** \$7,465-7,530. **UNDERWAY (TARGET ADJUSTED -SEE ABOVE- BASED ON ADDITIONAL DATA)**

The **W-c** is subdividing into five smaller (blue) waves, and **W-v** may have ended, though we can allow for one more **W-iv, v** to ideally \$7,475. Thus, while there could be one more wave up, it's not necessarily the case, so we turn NEUTRAL on this index for the short term.

WARNING LEVELS: percentages (%) indicate the chance the downtrend is over.

| | | | | |
|---|--|---|--|--|
| Radar lock (20%) \$7,333 | Shot across the bow (40%) \$7,395 | 1st hit caution (60%) \$7,483 | 2nd hit critical (80%) \$7,541 | 3rd hit, ship sinks (100%) \$7,598 |
|---|--|---|--|--|

Key Finding: **W-c** of **W-b/ii** is underway, ideally to \$7,465-7,530, with the lower end of that range preferred. It is subdividing into five smaller (blue) waves, and **W-v** may have ended, though we can allow for one more **W-iv, v** to ideally \$7,475. A break below today's low would be a good initial sign that **W-b/ii** has ended. Note that from today's high, a **c=a** relationship targets the April low.



NDX Outlook: Long-term (years) BULLISH. Intermediate term (months) BEARISH. Mid-term (weeks) BEARISH. Short-term (days) NEUTRAL.

WAVE LABEL KEY

| | | | | | |
|---|---|--|---|--|---|
| [W-4] Major Wave Corrective Wave | [W-iv]? Intermediate Corrective wave | [W-b/2] Minor Corrective wave | [W-c] Minute Corrective wave | W-3,4,5 Minute Impulse wave | \$29,780-30,400 Fib target zone |
|---|---|--|---|--|---|

CURRENT WAVE POSITION

We continue to keep it very simple as things remain on track. Namely, so far, the index has done essentially what we thought it would on Wednesday: Subdividing into

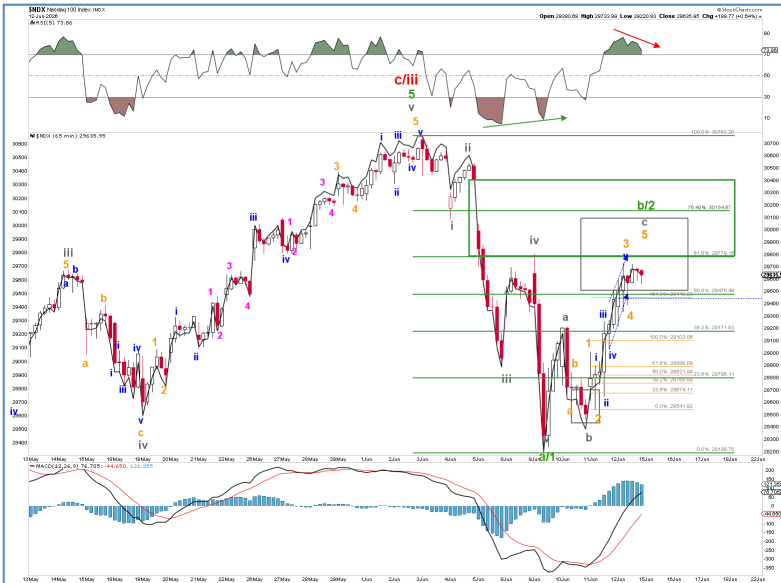
- **W-a to ideally \$29,170-475; REACHED \$29,112 yesterday**
- **W-b to \$28,800+/-100; REACHED \$28,462 yesterday**
- **and W-c \$29,780-30,400. UNDERWAY (TARGET ADJUSTED -SEE ABOVE- BASED ON ADDITIONAL DATA.**

The **W-c** is subdividing into five smaller (gray) waves, and **W-3, 4** may have ended. A **W-5** to ideally \$29,780-30,400, with the lower end preferred, can still be anticipated, contingent on holding at least above today's low. Thus, while there could be one more wave up, it's not necessarily the case, so we turn **NEUTRAL** on this index for the short term.

WARNING LEVELS: percentages (%) indicate the chance the downtrend is over.

| | | | | |
|--|---|--|---|---|
| Radar lock (20%) \$29,294 | Shot across the bow (40%) \$29,753 | 1st hit caution (60%) \$30,092 | 2nd hit critical (80%) \$30,441 | 3rd hit, ship sinks (100%) \$30,762 |
|--|---|--|---|---|

Key Finding: **W-c** of **W-b/2** is underway, ideally to \$29,780-30,400, with the lower end of that range preferred. It is subdividing into five smaller (orange) waves, and **W-3, 4** may have ended, so we can allow for one more **W-5**. A break below today's low would be a good initial sign that **W-b/2** has ended. We will then look for **W-3/c** to \$26,500+/-750.



SML Outlook: Long-term (years) BULLISH. Intermediate term (months) BEARISH. Mid-term (weeks) NEUTRAL. Short-term (days) BULLISH

WAVE LABEL KEY (based on daily chart)

| | | | | | |
|------------------------------------|--|------------------------------------|-------------------------------------|--|---------------------------------------|
| [W-3] Major Degree label | [W-c] Intermediate ED/Impulse wave | [W-5] Minor Impulse wave | [W-v] Minute Impulse wave | [W-3,4,5] Micro Impulse wave | \$1775+/-25 Fib target zone |
|------------------------------------|--|------------------------------------|-------------------------------------|--|---------------------------------------|

CURRENT WAVE POSITION

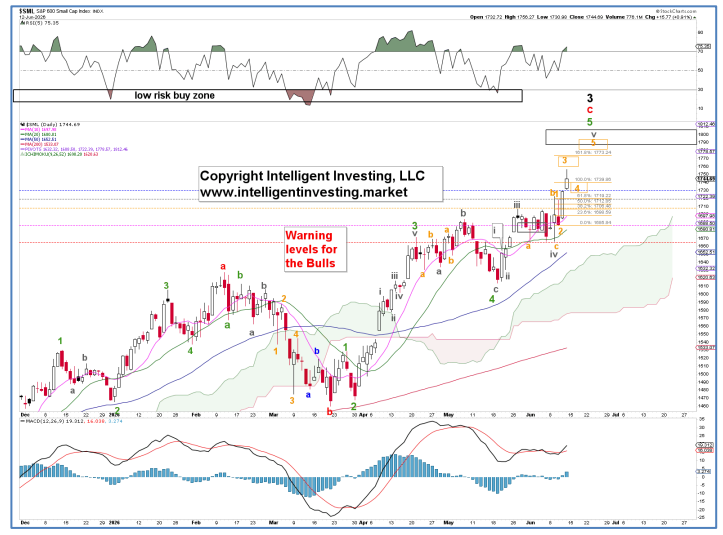
W-5 of **W-c** of **W-3** is preferably underway, subdividing into **W-iii**, **W-iv**, and **W-v**, alternatively **W-3,4,5** (hourly vs daily charts' count), ideally reaching ~**\$1,775+**. But if the index drops below \$1,666, the **W-3** has topped (prematurely). Note that the hourly and daily charts show two different internal counts, both pointing to the same result.

W-5 of **W-c** of **W-3** is preferably underway, ideally targeting \$1775+/-25.

WARNING LEVELS: percentages (%) indicate the chance the uptrend is over.

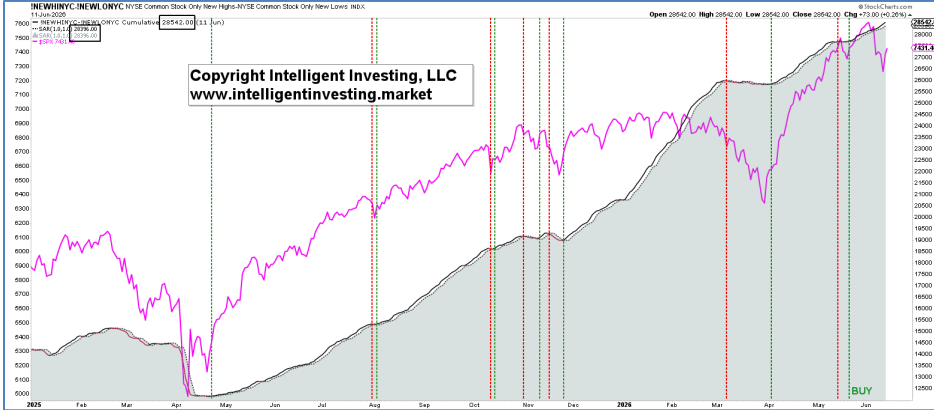
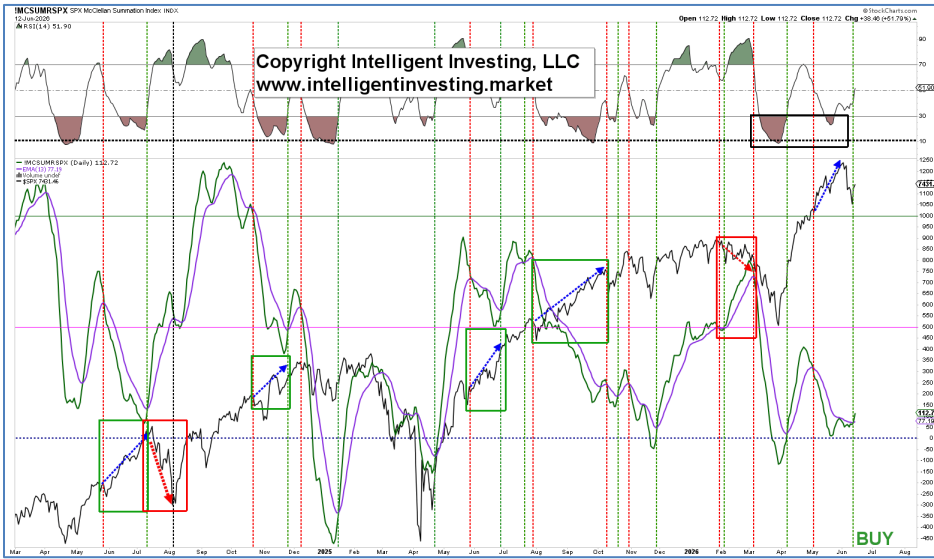
| | | | | |
|--|--|---|--|--|
| Radars lock (20%) \$1,729 | Shot across the bow (40%) \$1,718 | 1st hit caution (60%) \$1,707 | 2nd hit critical (80%) \$1,686 | 3rd hit, ship sinks (100%) \$1,666 |
|--|--|---|--|--|

Key Finding: **W-5** is still underway, and we expect it to reach around \$1,775 ± 25. Below \$1,666 and **W-3** is in (prematurely).



MARKET BREADTH BULLISH.

The NYAD set a new ATH today, and a true multi-year bear market has therefore been avoided. Meanwhile, the Summation Index is back on a buy, while our trend indicator remains long. Note that there've been several occasions with declining breadth during rallies and increasing breadth during declines (blue and red arrows). Don't ask us why that is, but we could very well see the same now.



CRYPTO CURRENCIES

BTC Outlook: Long-term (years) BULLISH. Intermediate-term (months) BULLISH. Mid-term (weeks) BEARISH. Short-term (days) NEUTRAL.

WAVE LABEL KEY

| | | | | |
|--|--|--|--|---|
| [W-iv] Intermediate Corrective wave | [W-c] Minor Corrective wave | [W-v] Minute Impulse wave | [W-5] Micro Corrective wave | \$53,945-57,415 Fib target: reached |
|--|--|--|--|---|

CURRENT WAVE POSITION

We are still trying to determine if **W-4** has topped and if the final **W-5** could have failed. So, today's high could be part of the more complex 4th wave, we mentioned yesterday, provided BTC stays below the critical warning levels for the Bears.

It appears the **W-iv** is nearing its end, as the final 5th wave could have failed. Above \$66K without going lower will confirm this thesis. Below the recent low (**W-3**), **W-5** is still underway to the ideal target zone

WARNING LEVELS: percentages (%) indicate the chance the downtrend is over.

| | | | | |
|--|---|--|---|---|
| Radar lock (20%) \$61,322 | Shot across the bow (40%) \$64,000 | 1st hit Caution (60%) \$66,116 | 2nd hit critical (80%) \$70,584 | 3rd hit, ship sinks (100%) \$72,412 |
|--|---|--|---|---|

Key Finding: The smaller **W-4** we forecasted last week, ideally to \$64-65K, has likely become more complex, and we still prefer to see the final **W-5** targeting \$57,415-53,945. However, cryptos are notorious for failed 5th of 5th waves, so a lower low may not happen if price moves above \$66K.



ETH Outlook: Long-term (years) BULLISH. Intermediate term (months) BULLISH. Mid-term (weeks) BULLISH. Short-term (days) NEUTRAL

WAVE LABEL KEY

| | | | | | |
|--|---|--|---|---------------------------------------|--|
| [W-4] Major Corrective Wave | [W-c] Intermediate Corrective wave | [W-c] Minor Corrective wave | [W-c] Minute Corrective wave | [W-5] Micro Impulse wave | \$1,350+/-50 Fib target zone |
|--|---|--|---|---------------------------------------|--|

CURRENT WAVE POSITION

We are still trying to determine if **W-4** has topped and if the final **W-5** could have failed. So, today's high could be part of the more complex 4th wave we mentioned yesterday, provided ETH stays below the critical warning levels for the Bears.

It appears the **W-4** is nearing its end, as the final 5th wave could have failed. Above \$1819 without going lower would be a first good sign that the low is in. Below the recent low (**W-3**), **W-5** is still underway to the ideal target zone

WARNING LEVELS: percentages (%) indicate the chance the downtrend is over.

| | | | | |
|---|--|---|--|--|
| Radar lock (20%) \$1,818 | Shot across the bow (40%) \$1,819 | 1st hit Caution (60%) \$1,915 | 2nd hit critical (80%) \$2,043 | 3rd hit, ship sinks (100%) \$2,146 |
|---|--|---|--|--|

Key Finding: The smaller **W-4** we forecasted last week to ideally ~\$ 1,700 has likely become complex, and the **W-5** targeting ~\$1,350+/-50 is still expected. However, cryptos are notorious for failed 5th-of-5th waves, so a lower low may not form if price moves above at least \$1819.



RIOT Outlook: Long-term (years) BULLISH. Intermediate term (months) BULLISH. Mid-term (weeks) BULLISH. Short-term (days) BULLISH.

WAVE LABEL KEY

| | | | |
|--------------------------------------|---|---------------------------------------|-----------------------------------|
| [W-3/c] Major Degree label | [W-iii/c] Intermediate Impulse wave | [W-5] Minor Corrective wave | \$32-34 Fib target zone |
|--------------------------------------|---|---------------------------------------|-----------------------------------|

CURRENT WAVE POSITION

W-5 is likely underway as long as this week's low holds.

RIOT should have had one last 5th wave (**W-5**) up its sleeve, targeting that \$30-34 zone. Although the **W-4** can still go as deep as \$21+/-1, it appears to have bottomed right at the 38.20% retracement of **W-3**, and the next rally ideally to \$32-34 is expected as long as this week's low holds.

WARNING LEVELS: percentages (%) indicate the chance the downtrend is over.

| | | | | |
|---|--|---|--|--|
| Radar lock (20%) \$26.95 | Shot across the bow (40%) \$26.46 | 1st hit Caution (60%) \$25.85 | 2nd hit critical (80%) \$24.77 | 3rd hit, ship sinks (100%) \$24.31 |
|---|--|---|--|--|

Key Finding: **W-5** of **W-iii/c** should be underway as it allows the daily and monthly chart to align. A break below \$19.07 will suggest a larger top has been struck. The next rally to \$32-34 is expected as long as this week's low holds.



GOLD, MINERS & OIL

GDx Outlook: Long-term (years) BULLISH Intermediate term (months) BULLISH Mid-term (weeks) BULLISH. Short-term (days) NEUTRAL

WAVE LABEL KEY

| | | | | | |
|--|---|--|---|---|--------------------------------------|
| [W-4] Major Corrective wave | [W-c] Intermediate Corrective wave | [W-c] Minor Corrective wave | [W-c] Minute Corrective wave | [W-4,5] Micro Impulse wave | \$68-72 Fib target zone |
|--|---|--|---|---|--------------------------------------|

CURRENT WAVE POSITION

W-4 of **W-c** of **W-c** of **W-c** is underway, ideally targeting \$79+/-1, from which a final **W-5** can then ideally target \$68-72. Thus, it appears **W-4** is almost complete as we can now also place an **ALT: 4** label at yesterday's low.

The larger 4th wave appears to be nearing its end with possibly only one last 4-5 sequence, maybe two.

WARNING LEVELS: percentages (%) indicate the chance the downtrend is over.

| | | | | |
|------------------------------------|---|--|---|---|
| Radar lock (20%) \$80.31 | Shot across the bow (40%) \$83.32 | 1st hit Caution (60%) \$86.40 | 2nd hit critical (80%) \$88.57 | 3rd hit, ship sinks (100%) \$90.36 |
|------------------------------------|---|--|---|---|

Key Finding: GDx is still in its larger 4th wave, but it is nearing its end, wrapping up its final set of 4th and 5th waves, with three different wave degrees all pointing towards around the same support level: \$68-72. However, a break above \$86.40 without going lower strongly indicates that the low is already in. Hence, we must start to think about long-term risk/reward here.



GOLD Outlook: Long-term (years) BULLISH. Intermediate term (months) BULLISH. Mid-term (weeks) BULLISH. Short-term (days) NEUTRAL

WAVE LABEL KEY

| | | | | |
|--|---|--|---|---|
| [W-4] Major Corrective wave | [W-c] Intermediate Corrective wave | [W-c] Minor Corrective wave | [W-c] Minute Corrective wave | \$4000+/-100 Fib target zone |
|--|---|--|---|---|

CURRENT WAVE POSITION

W-iv of W-c of W-c is underway to ideally \$4300+/-50, from which a final W-v can then ideally target ~\$3900. Thus, it appears W-4 is almost complete.

The larger 4th wave appears to be nearing its end with possibly only one last 4-5 sequence, maybe two.

WARNING LEVELS: percentages (%) indicate the chance the downtrend is over.

| | | | | |
|---|--|---|--|--|
| Radar lock (20%) \$4,366 | Shot across the bow (40%) \$4,486 | 1st hit Caution (60%) \$4,595 | 2nd hit critical (80%) \$4,764 | 3rd hit, ship sinks (100%) \$4,891 |
|---|--|---|--|--|

Key Finding: GOLD is still in its larger 4th wave, but it is nearing its end, wrapping up its final set of 4th and 5th waves, with three different wave degrees all pointing towards around the same support level: ~\$3900. However, a break above \$4595 without going lower strongly indicates that the low is already in. Hence, we must start to think about long-term risk/reward here.



BRENT/WTIC Outlook: Long-term (years) BULLISH. Intermediate term (months) BULLISH. Mid-term (weeks) NEUTRAL Short term (days) NEUTRAL.

WAVE LABEL KEY FOR BRENT

| | | | |
|--|---|---------------------------------------|------------------------------------|
| [W-2/b] Major Corrective wave | [W-c] Intermediate Corrective wave | [W-5] Minor Impulse wave | \$87+/-1 Fib target zone |
|--|---|---------------------------------------|------------------------------------|

CURRENT WAVE POSITION FOR BRENT

W-2/b is still underway, as its **W-5** of **W-c** are still underway. BRENT's price has reached the ideal Fib target zone of **\$ 87 ± 1**. Which is close to a 50% retracement, typical for a 2nd/b-wave.

W-5 of **W-c** is still underway and has reached the ideal target zone ~\$87+/-1. But we have no signs of a reversal yet.

Meanwhile, potential positive divergence is building on the daily RS15, blue dotted arrow, but we have no signs of a reversal yet. A move above \$94.03 will be a good first sign that the low is in

WARNING LEVELS FOR BRENT: percentages (%) indicate the chance the downtrend is over.

| | | | | |
|--|--|---|---|---|
| Radars lock (20%) \$89.87 | Shot across the bow (40%) \$94.03 | 1st hit Caution (60%) \$98.00 | 2nd hit Critical (80%) \$102.16 | 3rd hit, ship sinks (100%) \$109.31 |
|--|--|---|---|---|

Key Finding: The final **W-5** lower is still underway, targeting around \$87/\$85 (BRENT/WTIC). WTIC did break below the lower ascending trendline, so it's on watch, but so far it's no real biggie. Overall, we still have no signs of a reversal yet.



ETF TRADE ALERTS*

- Short-term System (EoD): Hold time is days to weeks. The trading signal is generated at the EoD.
- Intermediate-term System (EoW): Hold time is weeks to months. The trading signal is generated at the EoW.
- Long-term System (EoM): Hold time is months to years. The trading signal is generated at the EoM.

Green = BUY or SELL,

Purple = Open Position (HOLD),

Yellow = prior action . BUY or SELL),

White = Stay in cash

DOW JONES* (DIA, other ETFs are DDM, UDOW)

- Short-term On 06/12: BUY a position. Signal given at 511176.40
- Intermediate-term on 06/12: HOLD the position bought 04/17. BUY signal was given at 49447.43. UP 3.5%

NDX* (QQQ, other ETFs are QLD, TQQQ)

- Short-term On 06/12: Stay in cash and wait for a new buy signal.
- Intermediate-term on 06/12: HOLD the position bought 04/10. BUY signal was given at 25116.34. UP 18.1% (!)

S&P500* (SPY, other ETFs are SSO, SPXL)

- Short-term On 06/12: Stay in cash and wait for a new buy signal.
- Intermediate-term on 06/12: HOLD the position bought 04/17. BUY signal was given at 7126.06. UP 8.8%

SEMI-CONDUCTORS* (SOXX, other ETFs are USD, SOXL).

- Short-term On 06/12: BUY a position. Signal given at 13395.11
- Intermediate-term on 06/12: HOLD the position bought 04/10. BUY signal given at 8889.83. UP 50.3% (!)

S&P600 Small Cap* (IWM, other ETFs are UWM, TNA).

- Short-term On 06/12: Stay in cash and wait for a new buy signal.
- Intermediate-term on 06/12: HOLD the position bought 04/10. BUY signal was given at 1584.15 UP 10.1%.

Bitcoin* (IBIT)

- Short-term On 06/12: Stay in cash and wait for a new buy signal.
- Intermediate-term on 06/12: Stay in cash and wait for a new buy signal.

Ethereum* (ETHE)

- Short-term On 06/12: Stay in cash and wait for a new buy signal.
- Intermediate-term on 06/12: Stay in cash and wait for a new buy signal.

MAGNIFICENT 7+ TRADE ALERTS*

- Short-term System (EoD): Hold time is days to weeks. The trading signal is generated at EoD.
- Intermediate-term System (EoW): Hold time is weeks to months. The trading signal is generated at EoW.
- Long-term System (EoM): Hold time is months to years. The trading signal is generated at EoM.

Green = BUY or SELL,

Purple = Open Position (HOLD),

Yellow = prior action . BUY or SELL),

White = Stay in cash

AAPL*

- Short-term On 06/12: Stay in cash and wait for a new buy signal.
- Intermediate-term on 06/12: HOLD the position bought 04/10. Signal given at 260.48. UP 11.7% (!)

AMZN*

- Short-term On 06/12: Stay in cash and wait for a new buy signal.
- Intermediate-term on 06/12: Stay in cash and wait for a new buy signal.

GOOG*

- Short-term On 06/12: Stay in cash and wait for a new buy signal.
- Intermediate-term on 06/12: SELL the position bought 04/10. BUY signal was given at 238.38. UP 13.3% (!)

META*

- Short-term On 06/12: Stay in cash and wait for a new buy signal.
- Intermediate-term on 06/12: Stay in cash and wait for a new buy signal.

MSFT*

- Short-term On 06/12: Stay in cash and wait for a new buy signal.
- Intermediate-term on 06/12: SELL the position bought 04/17. BUY signal was given at 422.79. DOWN 7.6%

NFLX*

- Short-term On 06/12: Stay in cash and wait for a new buy signal.
- Intermediate-term on 06/12: Stay in cash and wait for a new buy signal.

NVDA*

- Short-term On 06/12: Stay in cash and wait for a new buy signal.
- Intermediate-term on 06/12: Stay in cash and wait for a new buy signal.

TSLA*

- Short-term On 06/12: Stay in cash and wait for a new buy signal.
- Intermediate-term on 06/12: HOLD the position bought 05/01. Buy signal was given at 390.82. UP 3.6%

CRYPTOS TRADE ALERTS *

This is a working document because cryptocurrencies trade 24/7, 365 days a year. Check back daily around 5 pm PST to see if any signals have been updated. We also aim to provide timely updates on weekends, but personal circumstances may prevent us from doing so. We appreciate your patience and understanding.

- Short-term System (EoD): Hold time is days to weeks. The trading signal is generated at EoD.
- Intermediate-term System (EoW): Hold time is weeks to months. The trading signal is generated at EoW.
- Long-term System (EoM): Hold time is months to years. The trading signal is generated at EoM.

Green = BUY or SELL,

Purple = Open Position (HOLD),

Yellow = prior action . BUY or SELL),

White = Stay in cash

BinanceCoin (BNB)*

- Short-term On 06/14 HOLD the position bought 06/13 at 609. UP 1.0%.
- Intermediate-term On 06/14 SELL the position bought 05/10. BUY signal was given at 665.03. DOWN 3.7%

Bitcoin (BTC)*

- Short-term On 06/14 HOLD the position bought 06/13 at 64381. UP 1.8%
- Intermediate-term On 06/14 Stay in cash and wait for a new buy signal.

ChainLink (LINK)*

- Short-term On 06/14 Stay in cash and wait for a new buy signal.
- Intermediate-term On 06/14 Stay in cash and wait for a new buy signal.

Ethereum (ETH)*

- Short-term On 06/14 Stay in cash and wait for a new buy signal.
- Intermediate-term On 06/14 Stay in cash and wait for a new buy signal.

Solana (SOL)*

- Short-term On 06/14 HOLD the position bought 06/13 at 68.81 UP 3.4%
- Intermediate-term On 06/14 Stay in cash and wait for a new buy signal.

TRON (TRX)*

- Short-term On 06/14 Stay in cash and wait for a new buy signal.
- Intermediate-term On 06/14 SELL the position bought 03/22. Buy signal was given at \$0.318. UP 3.2%

*BACKTESTED TRADING SYSTEM PERFORMANCES

Our new trading systems work best when you apply the compounding principle, which involves reinvesting some or all your profits into the next trade. The more you compound, the better the returns will be. Please review the tables below.

Do not trade positions bought without the system's signals using the system's trading signals. Additionally, please refrain from entering a position when the trade is already in progress; wait for a new trading signal.

These systems operate entirely independently of our analysis. Do not try to combine or correlate them. They track prices and trends across several parameters, triggering buy, sell, or hold signals based on if/then conditions. Sometimes our analysis is correct while the system is wrong, or vice versa. Or both can be right or wrong. Therefore, these systems complement our analyses and represent the ultimate trading experience: simply execute the signal. Refer to the previous page for what trading really is: a mindless, boring process of execution. Nothing more, nothing less.

The code for these trading systems is available for purchase. Please contact us for pricing details. It is written in Pine Script and can be integrated directly with TradingView, Alpaca, or Interactive Brokers (IBKR), enabling it to manage all your trading needs. Any AI, such as GROK or ChatGPT, can quickly translate code into another language if necessary.

| Year: 2025 | SYSTEM | | | | | |
|---|------------|-------------------|------------|-------------------|-------------|----------------------|
| Index | Short-term | Intermediate-term | Long-term* | Buy-n-Hold (2025) | Long-term** | Buy-n-Hold (2023-25) |
| SPX | 8.5% | 16.3% | 15.8% | 16.4% | 43.5% | 77.6% |
| NDX | 10.5% | 19.4% | 18.3% | 20.2% | 69.1% | 128.6% |
| DOW | 4.5% | 14.9% | 9.0% | 13.0% | 27.2% | 45.1% |
| SOX | 20.9% | 64.7% | 27.7% | 42.2% | 85.8% | 175.4% |
| * Only one trade (long entry) was executed in 2025 | | | | | | |
| **Backtesting from 01-01-2023, as the first long trade closed in March 2025 but was entered in 2023 | | | | | | |

| Year: 2025 | SYSTEM | | | |
|------------|------------|-------------------|------------|-------------------|
| STOCK | Short-term | Intermediate-term | Long-term* | Buy-n-Hold (2025) |
| AAPL | -11.4% | 1.8% | 18.0% | 9.1% |
| AMZN | -1.5% | -8.7% | 46.2% | 5.2% |
| GOOGL | 37.4% | 89.6% | 91.2% | 66.0% |
| META | 16.7% | 17.6% | 119.0% | 13.1% |
| MSFT | 9.1% | 13.0% | 26.2% | 15.6% |
| NFLX | 12.9% | 11.1% | 116.2% | 5.3% |
| NVDA | 14.1% | 51.5% | 157.6% | 38.9% |
| TSLA | 18.1% | 26.4% | 100.9% | 11.4% |

| Year: From Inception | SYSTEM | | | |
|----------------------|------------|-------------------|-----------|------------|
| Index | Short-term | Intermediate-term | Long-term | Buy-n-Hold |
| SPX | 278587.0% | 211376.0% | 319189.0% | 154122.2% |
| NDX | 1484.0% | 6417.0% | 11477.0% | 20375.2% |
| DOW | 2233433.0% | 202999.0% | 90204.0% | 117126.8% |
| SOX | 6265.0% | 5739.4% | 16174.8% | 3226.1% |

**Past performance is no guarantee of future results. The trading systems' signals are derived from data believed to be accurate, but such accuracy or completeness cannot be guaranteed. It should not be assumed that such signals, past or future, will be profitable, equal past performance, or ensure future performance or trends, primarily since a human writes these emails and may contain errors and omissions. LAST GENERATED 06/12/2026.*

REFERAL PROGRAM

Thank you for being a loyal member.

We've simplified our referral program to make it much more rewarding: Share the referral link below with friends, family, or colleagues. When they sign up and become a paid member, you both get 50% off for the two months. The more you refer, the more you save!

Your unique referral links:

DAILY NEWSLETTER: https://www.paypal.com/cgi-bin/webscr?cmd=_s-xclick&hosted_button_id=7QY6NWS2UN4H8.

MONTHLY NEWSLETTER: https://www.paypal.com/cgi-bin/webscr?cmd=_s-xclick&hosted_button_id=JB4CNBDCE292U

It only takes a few seconds to share. Many of our best long-term members came through personal recommendations from people like you.

If you have any questions, just email us.

Best regards,

Arnout & Team

THIS COPYRIGHTED MATERIAL IS INTENDED SOLELY FOR USE BY DESIGNATED RECIPIENTS. NO REPRODUCTION, RETRANSMISSION, OR OTHER USE OF THE INFORMATION OR IMAGES IS AUTHORIZED. LEGITIMATE NEWS MEDIA MAY QUOTE REPRESENTATIVE PASSAGES TO REPORT ON MY OPINIONS IN CONTEXT AND WITH FULL ATTRIBUTION. THE ANALYSIS IS DERIVED FROM DATA BELIEVED TO BE ACCURATE, BUT THE ACCURACY OR COMPLETENESS OF THAT DATA CANNOT BE GUARANTEED. IT SHOULD NOT BE ASSUMED THAT OUR ANALYSIS, PAST OR FUTURE, WILL BE PROFITABLE, EQUAL PAST PERFORMANCE, OR GUARANTEE FUTURE PERFORMANCE OR TRENDS. ALL TRADING AND INVESTMENT DECISIONS ARE THE SOLE RESPONSIBILITY OF THE READER. INCLUDING INFORMATION ABOUT MANAGED ACCOUNTS, PROGRAM POSITIONS, AND OTHER INFORMATION IS NOT INTENDED TO BE A RECOMMENDATION OR SOLICITATION. FOR MORE INFORMATION, CONTACT INTELLIGENT INVESTING, LCC AT INFO@INTELLIGENTINVESTING.MARKET. WE RESERVE THE RIGHT TO REFUSE SERVICE TO ANYONE FOR ANY REASON.