

INTELLIGENT INVESTING

DAILY NEWSLETTER

STOCK MARKETS, CRYPTOS, GOLD, MINERS & OIL
ETF, CRYPTO & MAGNIFICENT 7+ TRADE ALERTS



BY DR. ARNOU TER SCHURE & ASSOCIATES, 06/05/2026

THIS IS A WORKING DOCUMENT. ONCE THE LINK HAS BEEN EMAILED OUT, YOU CAN CHECK BACK AT ANY TIME USING THAT LINK TO SEE IF IT HAS BEEN UPDATED BY CHECKING THE TIMESTAMP: **VERSION 3,**
LAST UPDATED ON 06/06 AT 9:50 AM PST. FINAL VERSION.

TABLE OF CONTENTS

STOCKMARKETS	III
DOW	III
SOX	IV
SP500	V
NDX	VI
SMALL	VII
CRYPTO CURRENCIES & MINERS	VIII
BTC	VIII
ETH	IX
RIOT	X
GOLD, MINERS & OIL	XI
GDX	XI
GOLD	XII
BRENT/WTIC	XIII
ETF TRADE ALERTS	XIV
MAGNIFICENT 7+ TRADE ALERTS	XV
CRYPTO TRADE ALERTS	XVI
BACKTESTED TRADING SYSTEM PERFORMANCES	XVII
REFERAL PROGRAM	XVIII

STOCKMARKET

DOW Outlook: Long-term (years) BULLISH. Intermediate term (months) BEARISH. Mid-term (weeks) BEARISH. Short-term (days) NEUTRAL.

WAVE LABEL KEY

[W-4] Major Degree label	[W-a] Ending diagonal wave	[W-a/1] Minor Impulse wave	[W-a/i] Minute Impulse wave	\$46,000-42,000 Fib target zone
------------------------------------	--------------------------------------	--------------------------------------	---------------------------------------	---

CURRENT WAVE POSITION

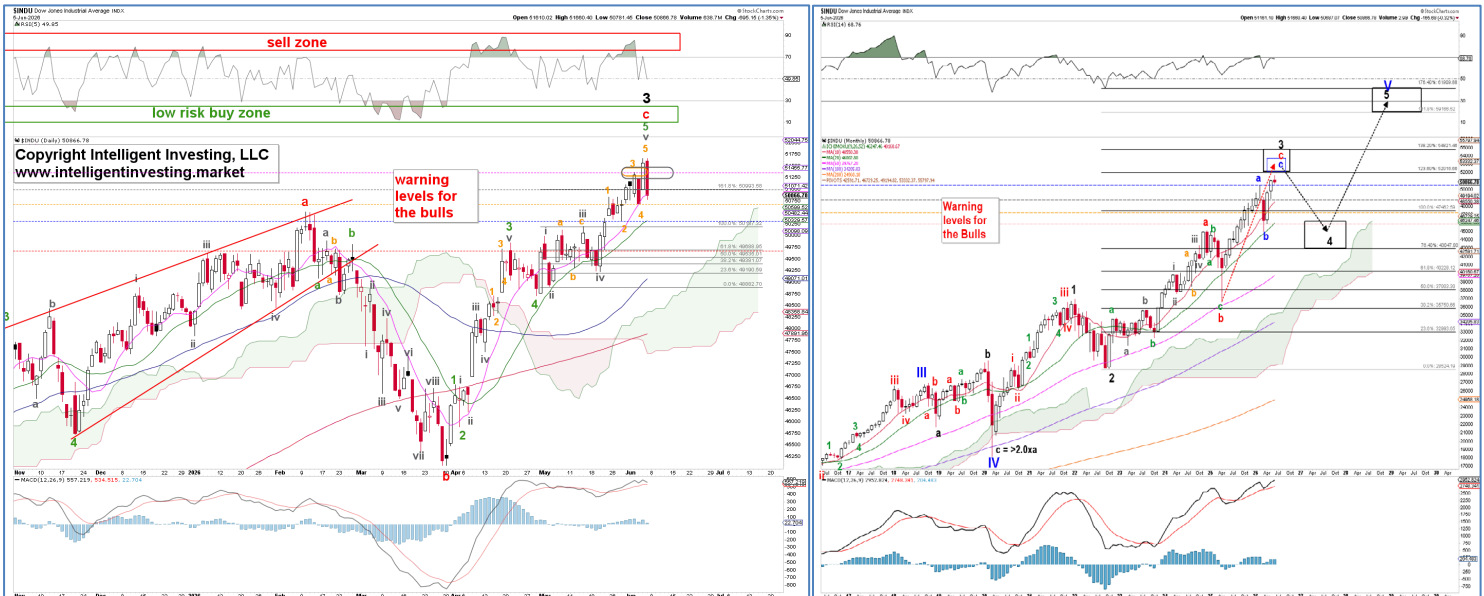
W-3 is likely complete at \$51,660 today, only ~350p (0.7%) away from the ideal ~\$52K target. Thus, **W-a** of **W-4** should be underway, but we need a whole lot more price action to be more certain, as the **W-v** we were tracking can still subdivide because the critical warning/support levels have not yet been broken. So we are NEUTRAL.

W-3 has likely topped, as the index came within 0.7% of its ideal target. But it only closed below its 2nd warning/support level, so we have no confirmation of a top for this index just yet.

WARNING LEVELS: percentages (%) indicate the chance the uptrend is over.

Radial lock (20%) \$51,369	Shot across the bow (40%) \$50,986	1st hit Caution (60%) \$50,687	2nd hit critical (80%) \$50,314	3rd hit, ship sinks (100%) \$49,697
--------------------------------------	--	---	--	--

Key Finding: The index has so far only slightly exceeded the ideal **W-v** target zone of this ending diagonal 5th wave, which is acceptable for a top. It reversed out of it to the downside on Wednesday, then moved back above it yesterday, but moved back below it again today, while making a marginally higher high (\$51,600). This starts to look like topping behavior, and the index came within ~0.7% of its ideal **W-3** target. Thus, all things considered, this looks like a topping process, but we need to see a break below \$50,314 to be much more certain that the ending diagonal **W-v** we were tracking is not subdividing further.



SOX Outlook: Long-term (years) BULLISH. Intermediate term (months) BEARISH. Mid-term (weeks) BEARISH. Short-term (days) BEARISH.

WAVE LABEL KEY

[W-iv] Intermediate Impulse wave	[W-a/1] Minor Impulse wave	[W-iii] Minute Impulse wave	\$10,500-11,350 Fib target zone
--	--------------------------------------	---------------------------------------	---

CURRENT WAVE POSITION

W-iii has been completed; **W-iv** is underway, ideally reaching the ideal Fib target zone of **\$10,500-11,350**. And subdividing into at least three waves: **a, b, c**. **W-a** is now underway, ideally toward ~\$11,900+/-200, and a bounce, **W-b**, is expected thereafter before **W-c** kicks in, targeting the Fib-target zone.

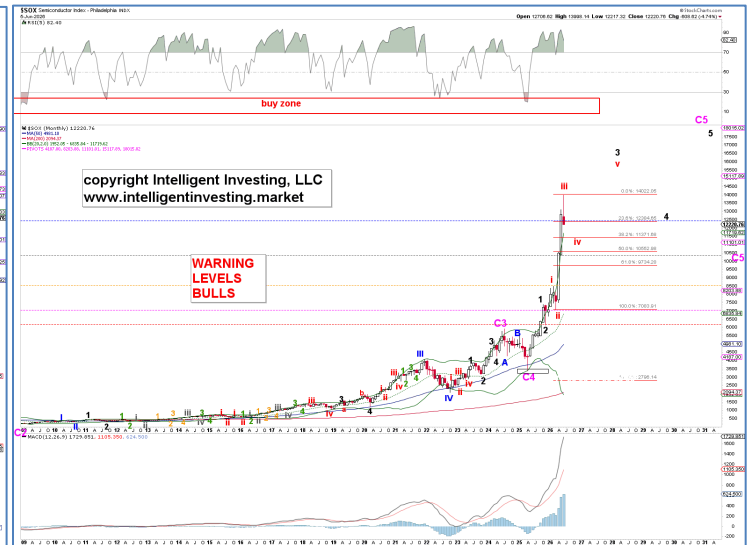
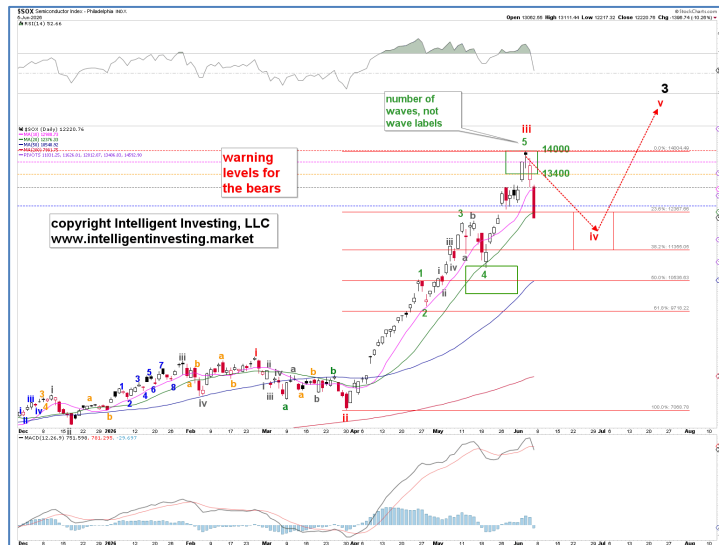
*Today's decline puts a fork in "the SOX rally may have further to go", as we knew that "below \$12,737 will go a long way to confirm the red **W-iv**," which is what we got today.*

Up to yesterday, "we had the potential for a larger correction brewing as we can count five waves up from the March low, but we had no signs of a top yet, as the index had not broken below any of the warning/support levels for the Bulls." Today it broke below the 4th warning level (\$12,452), so >80% chance **W-iv** is underway. We can now add the warning/resistance levels for the Bears on the chart

WARNING LEVELS: percentages (%) indicate the chance the downtrend is over.

Radar lock (20%) \$12,548	Shot across the bow (40%) \$13,041	1st hit Caution (60%) \$13,400	2nd hit critical (80%) \$13,726	3rd hit, ship sinks (100%) \$13,998
--	---	--	---	---

Key Finding: The index reached the ideal **W-5** target zone this week in a five-wave advance, and it has now closed below its 4th warning/support levels — thus, we have good signs of a local top. Overall, we see the index bottoming out at ~\$11K in a complex structure before the next rally can start.



SPX Outlook: Long-term (years) BULLISH. Intermediate term (months) BEARISH. Mid-term (weeks) BEARISH. Short-term (days) BEARISH.

WAVE LABEL KEY

[W-4] Major Degree label	[W-a] Intermediate Corrective wave	[W-a/i] Minute Corrective/Impulse wave	[W-c/3] Micro Impulse wave	\$6,190-6,740 Fib target zone
------------------------------------	--	--	--------------------------------------	---

CURRENT WAVE POSITION

W-3 is most likely complete at \$7,620, and **W-4** is most likely underway. 4th waves are often (irregular) flats, so expect a big counter-trend rally at some point. For now, **W-3/c** is underway. Based on the 65-min candles, the index could already be in **W-5**, but the daily has not yet confirmed this, so we must give it a few more days to get a better read. Regardless, we expect a bounce soon (**W-b/ii**) to ideally ~\$7,400-500, can we say Turn-around Tuesday!?, before the next leg lower starts.

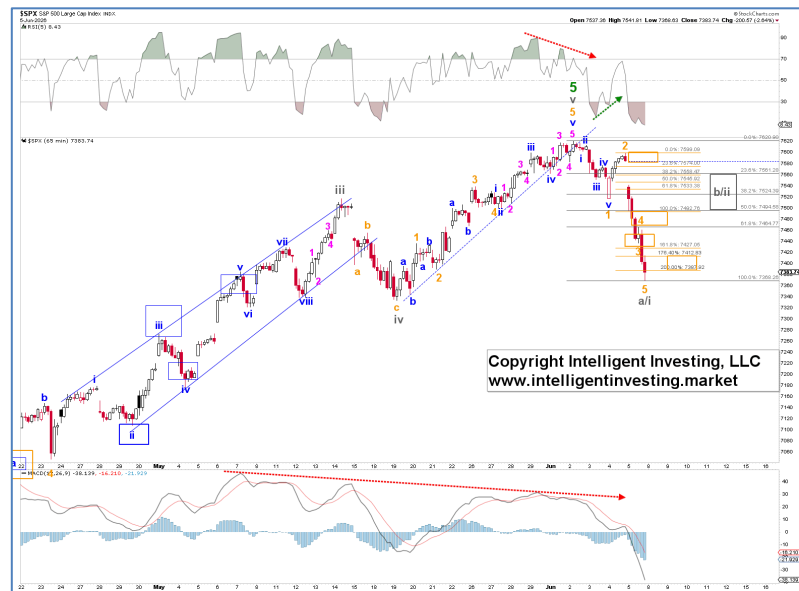
*The forecast on Wednesday for five waves lower, a rally back to the target zone (\$7,595+/-10), followed by another drop, nailed the price action since. Besides, the **W-ii** alternative scenario is now entirely off the table, so we are in Bear mode, so to speak. Meanwhile, **W-3/c** has exceeded the typical 1.618x extension (\$7,430), so we expect a low around \$7400 instead before a meaningful multi-day bounce can start.*

Up to yesterday, the index "had yet to close below meaningful warning/support levels for the Bulls (\$7,499 at least) to signal with more confidence **W-3** has topped, or else another wave higher is on our hands." We didn't have to wait much longer, as today's close at \$7,383 (below the 5th and final warning level of \$7,389) strongly suggests that **W-3** topped and a multi-month correction should be underway. We can now present warning/resistance levels for the Bears

WARNING LEVELS: percentages (%) indicate the chance the downtrend is over.

Radar lock (20%) \$7,412	Shot across the bow (40%) \$7,463	1st hit caution (60%) \$7,516	2nd hit critical (80%) \$7,553	3rd hit, ship sinks (100%) \$7,620
---	--	---	--	--

Key Finding: Now we have very good signs of a larger top, as Thursday's lower low counts as five blue waves lower, which are part of **W-a/1**. Yesterday's bounce right in the ideal \$7,595+/-10 target zone was **W-2/b**, and today's decline to a **W-3/c**, ideally to \$7,445+/-10, which has already been exceeded, tells us that we are 100% on the right track. Although the hourly chart can already be counted as five waves lower, the daily chart does not yet allow that, so we expect a low around \$7400 before a meaningful multi-day bounce to \$7500+/-50 can start. But please be advised that we're still in the early stages, so we're still "feeling the waters" a bit regarding the expected bigger swings.



NDX Outlook: Long-term (years) BULLISH. Intermediate term (months) BEARISH. Mid-term (weeks) BEARISH. Short-term (days) BEARISH.

WAVE LABEL KEY

[W-3] Major Degree label	[W-c/iii] Intermediate ED/Impulse wave	[W-a/1] Minor Impulse wave	[W-v] Minute Impulse wave	\$25,475-28,210 Fib target zone
------------------------------------	--	--------------------------------------	-------------------------------------	---

CURRENT WAVE POSITION

W-3 is most likely complete at \$30,762, and **W-4** is most likely underway. 4th waves are often (irregular) flats, so expect a big counter-trend rally at some point. For now, **W-a/1** is underway, ideally targeting ~\$ 28,650 +/- 150. We don't and can't know yet if we'll see five or only three waves lower on the daily time frame. Regardless, we expect a decent bounce soon (**W-b/2**) to ideally ~\$30,000-30,500, can we say Turn-around Tuesday!?, before the next leg lower starts,

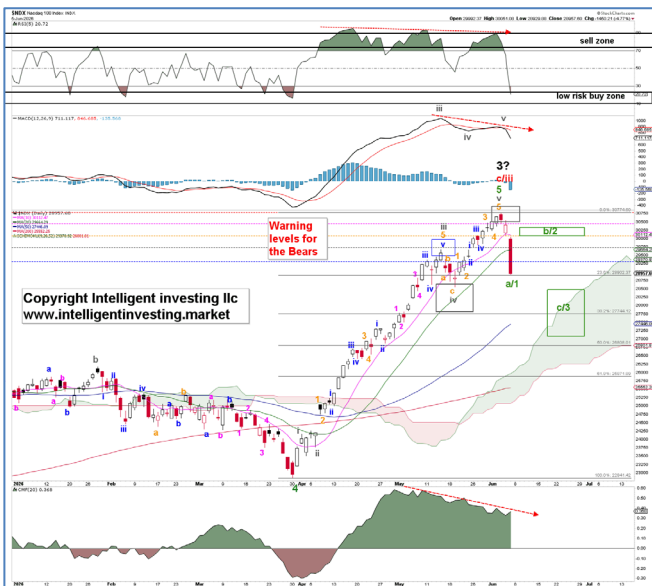
*Finally, the index has closed below its final warning/support levels, indicating that a larger top has been struck. Either **W-3** has been completed, or we're only in a one-degree lower **W-iv**. Both point towards ~\$26,800+/-1350.*

Up to yesterday, the index "had yet to close below meaningful warning/support levels for the Bulls (\$29,991 at least) to signal with more confidence **W-3** has topped, or else another wave higher is on our hands." We didn't have to wait much longer, as today's close at \$28,957 (below the 5th and final warning level of \$29,481) strongly suggests that **W-3**, alternatively **W-iv**, topped and a multi-month correction should be underway. We can now present warning/resistance levels for the Bears

WARNING LEVELS: percentages (%) indicate the chance the downtrend is over.

Radar lock (20%) \$29,301	Shot across the bow (40%) \$29,753	1st hit caution (60%) \$30,092	2nd hit critical (80%) \$30,441	3rd hit, ship sinks (100%) \$30,762
--	---	--	---	---

Key Finding: The index has closed below all its Bull warning/support levels — thus, we have signs of a top. **W-iv** or **W-3** is underway, both have the same target. So, why does it matter? In the end, it means that when this correction is over, we see only one more rally (**W-5**) or a rally (**W-v**), a drop (**W-4**), followed by a final **W-5**. Overall, bigger picture, we expect \$35,000+ by 2028, regardless, before the multi-year Bear market (a ~60% haircut) starts.



SML Outlook: Long-term (years) BULLISH. Intermediate term (months) BEARISH. Mid-term (weeks) NEUTRAL. Short-term (days) NEUTRAL

WAVE LABEL KEY

[W-3] Major Degree label	[W-c] Intermediate ED/Impulse wave	[W-5] Minor Impulse wave	[W-v] Minute Impulse wave	[W-5] Micro Impulse wave	~\$1750 Fib target: reached
------------------------------------	--	------------------------------------	-------------------------------------	------------------------------------	--------------------------------

CURRENT WAVE POSITION

W-3 could still be underway, subdividing into a complex **W-iv**, and **W-v** of **W-5** of **W-c**, reaching the ideal target of ~\$1,750. But if the index drops below \$1,630, the **W-3** has topped (prematurely).

Sideways price action over the past 9 days is hard to interpret, so we're not yet certain whether a larger top has been formed. Thus, below \$1,630: YES. Above \$1,700: NO.

Two weeks of 0 progress is always difficult to interpret, so either the larger 3rd wave (**W-3**) is still underway to ideally \$1,750, contingent on the index holding the warning levels listed below, or it has topped. TBD. And this is why we remain NEUTRAL for the shorter time frames.

WARNING LEVELS: percentages (%) indicate the chance the uptrend is over.

Radar lock (20%) \$1,690	Shot across the bow (40%) \$1,672	1st hit caution (60%) \$1,652	2nd hit critical (80%) \$1,630	3rd hit, ship sinks (100%) \$1,614
------------------------------------	---	--	---	---

Key Finding: The sideways price action over the last two weeks is hard to interpret. The index could still be in its **W-iv**, which would then have subdivided into three smaller waves (**a, b, c**). If the index can hold above \$1,652 and especially \$1,630, it still has a shot at the ideal target of \$1,750. Below \$1,630 and **W-3** is in (prematurely).



CRYPTO CURRENCIES

BTC Outlook: Long-term (years) BULLISH. Intermediate-term (months) BULLISH. Mid-term (weeks) BEARISH. Short-term (days) BEARISH.

WAVE LABEL KEY

[W-iv] Intermediate Corrective wave	[W-c] Minor Corrective wave	[W-v] Minute Impulse wave	[W-4] Micro Impulse wave	\$53,945-57,415 Fib target: reached
--	--	--	---------------------------------------	---

CURRENT WAVE POSITION

W-iv is still underway, subdividing into three (**a, b, c**) waves, and **W-c** is now underway, subdividing further into: **W-3, 4, 5** of **W-iv** of **W-c** of **W-iv**, with the latter reaching the ideal Fib target zone of **\$53,945-57,415**. For now, **W-3** has likely bottomed at the 216.80% level of a very extended 3rd wave, typical for cryptos in a higher degree 5th wave. The Fib-target zone matches the bigger picture support zone.

Wave-c of W-iv is still underway, with a very extended smaller 5th wave, W-v, which is typical for cryptos. Ideally, W-3 of W-v has bottomed, with the last 4th wave underway and a final 5th wave yet to come.

The larger 4th wave is still underway, and we expect it to bottom out this month, ideally around \$53,945-57,415, but possibly as low as \$48-53K, depending on the Fib extensions the smaller waves choose. However, we still see this as a long-term opportunity. The 2nd chart is the weekly chart and shows a TWO-degree higher 4th wave (**W-IV**) underway, but the result is the same: another 5th wave to new ATHs is pending. Note the support zone matches the daily-wave-based target zone, and the developing positive divergence on the weekly indicators (dotted green arrows) vs those in 2022 (solid arrows). This all supports our “a significant bottom is close” thesis.

WARNING LEVELS: percentages (%) indicate the chance the downtrend is over.

Radar lock (20%) \$61,322	Shot across the bow (40%) \$64,000	1st hit Caution (60%) \$66,116	2nd hit critical (80%) \$70,584	3rd hit, ship sinks (100%) \$72,412
--	---	---	--	--

Key Finding: Wave-B topped in May, and we know that after B comes C, which most often subdivides into five waves, which we are seeing now. The short-term target zone aligns reasonably well with long-term support (\$49-55K). Positive divergences are starting to build on the weekly chart. Short-term, an up day will get the smaller **W-4** validated to ideally \$64-65K, from which **W-5** can target \$57,415-53,945, ideally.



ETH Outlook: Long-term (years) BULLISH. Intermediate term (months) BULLISH. Mid-term (weeks) BULLISH. Short-term (days) BEARISH.

WAVE LABEL KEY

[W-4] Major Degree label	[W-c] Intermediate Corrective wave	[W-c] Minor Impulse wave	[W-c] Minute Corrective wave	[W-5] Micro Impulse wave	\$1,350+/-50 Fib target zone
------------------------------------	--	------------------------------------	--	------------------------------------	--

CURRENT WAVE POSITION

W-4 is still underway, subdividing into five (**a, b, c, d, e**) waves, forming a massive triangle, aka bull flag. **W-e** is now underway, subdividing further into: **W-a b, c** with **W-c** of **W-e** now underway, the latter reaching the Fib target zone of **\$1,350+/-50** ideally

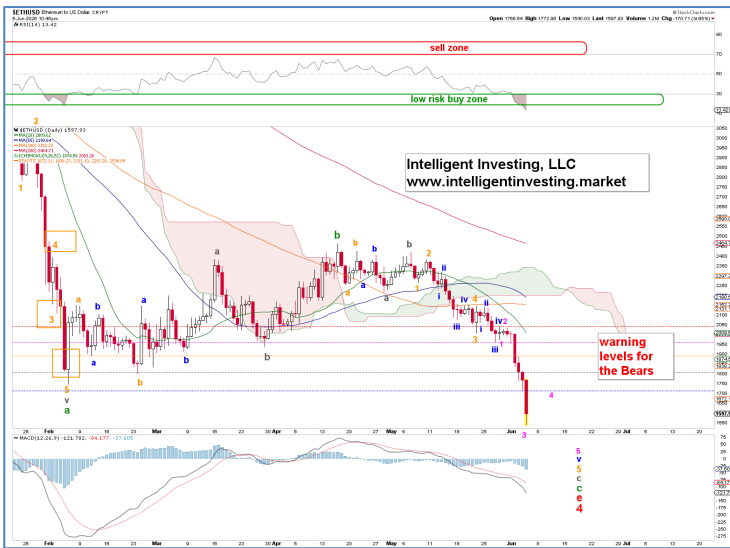
Wave-e of W-4 is still underway. It is subdivided into W-a, b, and W-c, and is now underway, of which its last 4th and 5th waves should materialize soon.

The larger 4th wave is still underway, and we expect it to bottom out this month, ideally around \$1,300-1,400, depending on the Fib extensions the smaller waves choose. However, we still see this as a long-term opportunity. Meanwhile, both the daily RSI and monthly RSI are now in their low-risk zones. Note that low risk is not the same as no risk, but history has shown that these low readings tend to present good rallies.

WARNING LEVELS: percentages (%) indicate the chance the downtrend is over.

Radar lock (20%) \$1,818	Shot across the bow (40%) \$1,819	1st hit Caution (60%) \$1,915	2nd hit critical (80%) \$2,043	3rd hit, ship sinks (100%) \$2,146
---	--	---	--	--

Key Finding: Wave-e of W-4 is underway, subdividing into three waves as triangles always consist of subsets of three-waves (3-3-3, 3-3-3-3, etc.) We also know that after B comes C, which most often subdivides into five waves. These five waves lower are what we are experiencing now. The short-term target zone aligns reasonably well with long-term support. Now ETH should wrap up its small 3rd wave, see several up days for a 4th wave (to ideally ~\$1,700), followed by a final 5th wave to ideally around \$1350+/-50.



RIOT Outlook: Long-term (years) BULLISH. Intermediate term (months) BULLISH. Mid-term (weeks) NEUTRAL. Short-term (days) BEARISH.

WAVE LABEL KEY

[W-3/c] Major Degree label	[W-iv] Intermediate Impulse wave	[W-4] Minor Impulse wave	\$21+/-1 Fib target zone
--------------------------------------	--	------------------------------------	------------------------------------

CURRENT WAVE POSITION

That's a wrap; **W-5** or **W-3/c** has most likely ended. Regardless, a deeper pullback to around \$21 ± 1 is now expected.

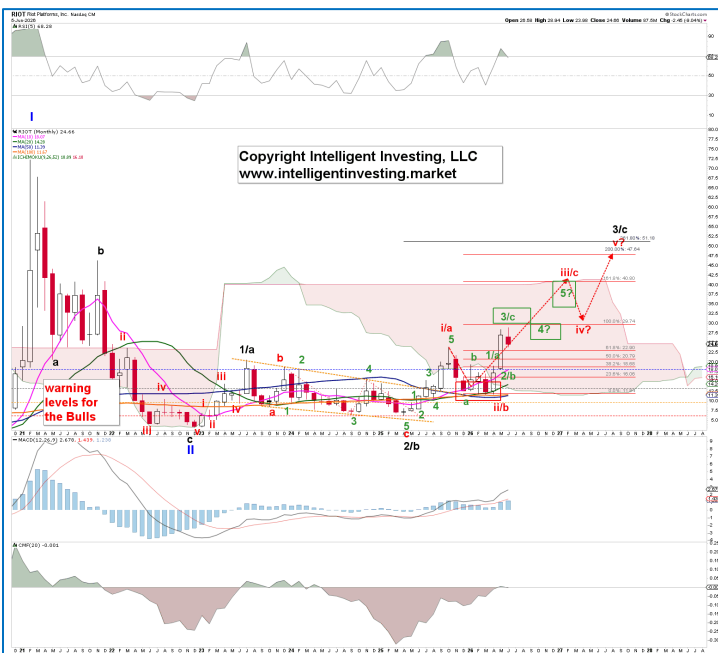
RIOT could have had one smaller 5th wave (W-v) up its sleeve, targeting that \$30-31 zone. But Friday decided enough was enough, and so a deeper correction to ideally \$21+/-1 should now be underway, with the next rally ideally to \$35-40 expected from that zone.

Either all of **W-iii/c** or only **W-3** of **W-iii/c** topped this week as RIOT closed below its 4th warning level on Friday. A break below \$19.07 will suggest a larger top has been struck.

WARNING LEVELS: percentages (%) indicate the chance the uptrend is over.

Radars lock (20%) \$26.95	Shot across the bow (40%) \$26.46	1st hit Caution (60%) \$25.85	2nd hit critical (80%) \$24.77	3rd hit, ship sinks (100%) \$24.31
--	--	---	--	--

Key Finding: The index has reached the ideal **W-5** target zone of this five-wave advance, and on Friday it closed below its 4th warning/support levels — thus, we have signs of a top in place. We expect RIOT to find support around \$21+/-1, from where it can rally to \$35-40. A break below \$19.07 will put this option under serious pressure.



GOLD, MINERS & OIL

GDJ Outlook: Long-term (years) BULLISH Intermediate term (months) BULLISH Mid-term (weeks) BEARISH. Short-term (days) BEARISH.

With Friday's breakdown, the bigger picture suggests **W-4** is still underway, ideally toward ~\$65+/-5, assuming this does not morph into a complex, clunky triangle. In that case, all we'll see is about \$75. Regardless, the current market environment is still a low-risk buying opportunity for those with a long-term vision.



BRENT Outlook: Long-term (years) BULLISH Intermediate term (months) BULLISH. Mid-term (weeks) NEUTRAL Short term (days) BEARISH.



A last, minor, 5th wave (green **W-5**) could be underway for BRENT to complete a five-wave **Wave-c** of **W-2/b** at ideally around \$88+/-2.

This would align with WTIC's possible tag of the lower ascending green dotted trendline at around \$85 for its **W-c** of **W-c** of **W-ii**, which would then be called a double zigzag.



ETF TRADE ALERTS*

- Short-term System (EoD): Hold time is days to weeks. The trading signal is generated at the EoD.
- Intermediate-term System (EoW): Hold time is weeks to months. The trading signal is generated at the EoW.
- Long-term System (EoM): Hold time is months to years. The trading signal is generated at the EoM.

Green = BUY or SELL,

Purple = Open Position (HOLD),

Yellow = prior action . BUY or SELL),

White = Stay in cash

DOW JONES* (DIA, other ETFs are DDM, UDOW)

- Short-term On 06/05 HOLD the position bought 05/20. Buy signal was given at 50009.35. UP 1.7%
- Intermediate-term on 06/05: HOLD the position bought 04/17. BUY signal was given at 49447.43. UP 2.7%

NDX* (QQQ, other ETFs are QLD, TQQQ)

- Short-term On 06/05: SELL the position bought 04/06. Buy signal was given at 24192.17. UP 19.9% (!)
- Intermediate-term on 06/05: HOLD the position bought 04/10. BUY signal was given at 25116.34. UP 15.2% (!)

S&P500* (SPY, other ETFs are SSO, SPXL)

- Short-term On 06/05: SELL the position bought 05/20. Buy signal was given at 7432.97. DOWN 0.7%
- Intermediate-term on 06/05: HOLD the position bought 04/17. BUY signal was given at 7126.06. UP 8.2%

SEMI-CONDUCTORS* (SOXX, other ETFs are USD, SOXL).

- Short-term On 06/05: SELL the position bought 05/20. Buy signal was given at 11813.29. UP 3.6%
- Intermediate-term on 06/05: HOLD the position bought 04/10. BUY signal given at 8889.83. UP 36.8% (!)

S&P600 Small Cap* (IWM, other ETFs are UWM, TNA).

- Short-term On 06/05: SELL the position bought 05/21. Buy signal was given at 1656.96. UP 0.9%.
- Intermediate-term on 06/05: HOLD the position bought 04/10. BUY signal was given at 1584.15 UP 5.5%.

Bitcoin* (IBIT)

- Short-term On 06/05: Stay in cash and wait for a new buy signal.
- Intermediate-term on 06/05: Stay in cash and wait for a new buy signal.

Ethereum* (ETHE)

- Short-term On 06/05: Stay in cash and wait for a new buy signal.
- Intermediate-term on 06/05: Stay in cash and wait for a new buy signal.

MAGNIFICENT 7+ TRADE ALERTS*

- Short-term System (EoD): Hold time is days to weeks. The trading signal is generated at EoD.
- Intermediate-term System (EoW): Hold time is weeks to months. The trading signal is generated at EoW.
- Long-term System (EoM): Hold time is months to years. The trading signal is generated at EoM.

Green = BUY or SELL,

Purple = Open Position (HOLD),

Yellow = prior action . BUY or SELL),

White = Stay in cash

AAPL*

- Short-term On 06/05: HOLD the position bought 03/31. Buy signal given at 253.79. UP 20.2% (!)
- Intermediate-term on 06/05: HOLD the position bought 04/10. Signal given at 260.48. UP 17.7% (!)

AMZN*

- Short-term On 06/05: Stay in cash and wait for a new buy signal.
- Intermediate-term on 06/05: Stay in cash and wait for a new buy signal.

GOOG*

- Short-term On 06/05: Stay in cash and wait for a new buy signal.
- Intermediate-term on 06/05: HOLD the position bought 04/10. BUY signal was given at 238.38. UP 15.6% (!)

META*

- Short-term On 06/05: SELL the position bought 06/04. BUY signal was given at 627.57. DOWN 5.5%.
- Intermediate-term on 06/05: SELL the position bought 05/29. Signal given at 632.51. DOWN 6.3%

MSFT*

- Short-term On 06/05: Stay in cash and wait for a new buy signal.
- Intermediate-term on 06/05: HOLD the position bought 04/17. BUY signal was given at 422.79. DOWN 1.5%

NFLX*

- Short-term On 06/05: Stay in cash and wait for a new buy signal.
- Intermediate-term on 06/05: Stay in cash and wait for a new buy signal.

NVDA*

- Short-term On 06/05: SELL the position bought 06/04. Buy signal was given at 218.66. DOWN 6.2%
- Intermediate-term on 06/05: SELL the position bought 04/10. BUY signal was given at 188.74. UP 8.5%

TSLA*

- Short-term On 06/05: Stay in cash and wait for a new buy signal.
- Intermediate-term on 06/05: HOLD the position bought 05/01. Buy signal was given at 390.82. UP 0.1%

CRYPTOS TRADE ALERTS *

This is a working document because cryptocurrencies trade 24/7, 365 days a year. Check back daily around 5 pm PST to see if any signals have been updated. We also aim to provide timely updates on weekends, but personal circumstances may prevent us from doing so. We appreciate your patience and understanding.

- Short-term System (EoD): Hold time is days to weeks. The trading signal is generated at EoD.
- Intermediate-term System (EoW): Hold time is weeks to months. The trading signal is generated at EoW.
- Long-term System (EoM): Hold time is months to years. The trading signal is generated at EoM.

Green = BUY or SELL,

Purple = Open Position (HOLD),

Yellow = prior action . BUY or SELL),

White = Stay in cash

BinanceCoin (BNB)*

- Short-term On 06/05 Stay in cash and wait for a new buy signal.
- Intermediate-term On 05/31 HOLD the position bought 05/10. BUY signal given at 665.03. UP 11.7%

Bitcoin (BTC)*

- Short-term On 06/05 Stay in cash and wait for a new buy signal.
- Intermediate-term On 05/31 SELL the position bought 04/19. Buy signal was given at 73824.27. -0.2%

ChainLink (LINK)*

- Short-term On 06/05 Stay in cash and wait for a new buy signal.
- Intermediate-term On 05/31 SELL the position bought 04/26. Buy signal was given at 9.49. DOWN 3.2%

Ethereum (ETH)*

- Short-term On 06/05 Stay in cash and wait for a new buy signal.
- Intermediate-term On 05/31 Stay in cash and wait for a new buy signal.

Solana (SOL)*

- Short-term On 06/05 Stay in cash and wait for a new buy signal.
- Intermediate-term On 05/31 Stay in cash and wait for a new buy signal.

TRON (TRX)*

- Short-term On 06/05 Stay in cash and wait for a new buy signal.
- Intermediate-term On 05/31 HOLD the position bought 03/22. Buy signal was given at \$0.318. UP 12.7% (!)

*BACKTESTED TRADING SYSTEM PERFORMANCES

Our new trading systems work best when you apply the compounding principle, which involves reinvesting some or all your profits into the next trade. The more you compound, the better the returns will be. Please review the tables below.

Do not trade positions bought without the system's signals using the system's trading signals. Additionally, please refrain from entering a position when the trade is already in progress; wait for a new trading signal.

These systems operate entirely independently of our analysis. Do not try to combine or correlate them. They track prices and trends across several parameters, triggering buy, sell, or hold signals based on if/then conditions. Sometimes our analysis is correct while the system is wrong, or vice versa. Or both can be right or wrong. Therefore, these systems complement our analyses and represent the ultimate trading experience: simply execute the signal. Refer to the previous page for what trading really is: a mindless, boring process of execution. Nothing more, nothing less.

The code for these trading systems is available for purchase. Please contact us for pricing details. It is written in Pine Script and can be integrated directly with TradingView, Alpaca, or Interactive Brokers (IBKR), enabling it to manage all your trading needs. Any AI, such as GROK or ChatGPT, can quickly translate code into another language if necessary.

Year: 2025	SYSTEM					
Index	Short-term	Intermediate-term	Long-term*	Buy-n-Hold (2025)	Long-term**	Buy-n-Hold (2023-25)
SPX	8.5%	16.3%	15.8%	16.4%	43.5%	77.6%
NDX	10.5%	19.4%	18.3%	20.2%	69.1%	128.6%
DOW	4.5%	14.9%	9.0%	13.0%	27.2%	45.1%
SOX	20.9%	64.7%	27.7%	42.2%	85.8%	175.4%
* Only one trade (long entry) was executed in 2025						
**Backtesting from 01-01-2023, as the first long trade closed in March 2025 but was entered in 2023						

Year: 2025	SYSTEM			
STOCK	Short-term	Intermediate-term	Long-term*	Buy-n-Hold (2025)
AAPL	-11.4%	1.8%	18.0%	9.1%
AMZN	-1.5%	-8.7%	46.2%	5.2%
GOOGL	37.4%	89.6%	91.2%	66.0%
META	16.7%	17.6%	119.0%	13.1%
MSFT	9.1%	13.0%	26.2%	15.6%
NFLX	12.9%	11.1%	116.2%	5.3%
NVDA	14.1%	51.5%	157.6%	38.9%
TSLA	18.1%	26.4%	100.9%	11.4%

Year: From Inception	SYSTEM			
Index	Short-term	Intermediate-term	Long-term	Buy-n-Hold
SPX	278587.0%	211376.0%	319189.0%	154122.2%
NDX	1484.0%	6417.0%	11477.0%	20375.2%
DOW	2233433.0%	202999.0%	90204.0%	117126.8%
SOX	6265.0%	5739.4%	16174.8%	3226.1%

**Past performance is no guarantee of future results. The trading systems' signals are derived from data believed to be accurate, but such accuracy or completeness cannot be guaranteed. It should not be assumed that such signals, past or future, will be profitable, equal past performance, or ensure future performance or trends, primarily since a human writes these emails and may contain errors and omissions. LAST GENERATED 06/05/2026.*

REFERAL PROGRAM

Thank you for being a loyal member.

We've simplified our referral program to make it much more rewarding: Share the referral link below with friends, family, or colleagues. When they sign up and become a paid member, you both get 50% off for the two months. The more you refer, the more you save!

Your unique referral links:

DAILY NEWSLETTER: https://www.paypal.com/cgi-bin/webscr?cmd=_s-xclick&hosted_button_id=7QY6NWS2UN4H8.

MONTHLY NEWSLETTER: https://www.paypal.com/cgi-bin/webscr?cmd=_s-xclick&hosted_button_id=JB4CNBDCE292U

It only takes a few seconds to share. Many of our best long-term members came through personal recommendations from people like you.

If you have any questions, just email us.

Best regards,

Arnout & Team

THIS COPYRIGHTED MATERIAL IS INTENDED SOLELY FOR USE BY DESIGNATED RECIPIENTS. NO REPRODUCTION, RETRANSMISSION, OR OTHER USE OF THE INFORMATION OR IMAGES IS AUTHORIZED. LEGITIMATE NEWS MEDIA MAY QUOTE REPRESENTATIVE PASSAGES TO REPORT ON MY OPINIONS IN CONTEXT AND WITH FULL ATTRIBUTION. THE ANALYSIS IS DERIVED FROM DATA BELIEVED TO BE ACCURATE, BUT THE ACCURACY OR COMPLETENESS OF THAT DATA CANNOT BE GUARANTEED. IT SHOULD NOT BE ASSUMED THAT OUR ANALYSIS, PAST OR FUTURE, WILL BE PROFITABLE, EQUAL PAST PERFORMANCE, OR GUARANTEE FUTURE PERFORMANCE OR TRENDS. ALL TRADING AND INVESTMENT DECISIONS ARE THE SOLE RESPONSIBILITY OF THE READER. INCLUDING INFORMATION ABOUT MANAGED ACCOUNTS, PROGRAM POSITIONS, AND OTHER INFORMATION IS NOT INTENDED TO BE A RECOMMENDATION OR SOLICITATION. FOR MORE INFORMATION, CONTACT INTELLIGENT INVESTING, LCC AT INFO@INTELLIGENTINVESTING.MARKET. WE RESERVE THE RIGHT TO REFUSE SERVICE TO ANYONE FOR ANY REASON.