

# INTELLIGENT INVESTING

## DAILY NEWSLETTER

STOCK MARKETS, CRYPTOS, GOLD, MINERS & OIL  
ETF, CRYPTO & MAGNIFICENT 7+ TRADE ALERTS



**BY DR. ARNOU TER SCHURE & ASSOCIATES, 05/14/2026**

THIS IS A WORKING DOCUMENT. ONCE THE LINK HAS BEEN EMAILED OUT, YOU CAN CHECK BACK AT ANY TIME USING THAT LINK TO SEE IF IT HAS BEEN UPDATED BY CHECKING THE TIMESTAMP: **VERSION 1,**  
**LAST UPDATED ON 05/14 AT 2:35 PM PST. ALL SECTIONS ARE UP TO DATE.**

# TABLE OF CONTENTS

<b>STOCKMARKETS</b>	<b>III</b>
DOW	III
SML	IV
SOX	V
SP500	VI
NDX	VII
<b>CRYPTO CURRENCIES &amp; MINERS</b>	<b>VIII</b>
BTC	VIII
ETH	IX
RIOT	X
<b>GOLD, MINERS &amp; OIL</b>	<b>XI</b>
GDX	XI
GOLD	XII
BRENT	XIII
<b>ETF TRADE ALERTS</b>	<b>XIV</b>
<b>MAGNIFICENT 7+ TRADE ALERTS</b>	<b>XV</b>
<b>CRYPTO TRADE ALERTS</b>	<b>XVI</b>
<b>BACKTESTED TRADING SYSTEM PERFORMANCES</b>	<b>XVII</b>
<b>REFERAL PROGRAM</b>	<b>XVIII</b>

# STOCKMARKET

**DOW Outlook: Long-term (years) BULLISH. Target 60000+ Intermediate term (months) BEARISH. Target ~43000+ Mid-term (weeks) BULLISH. Target 50750+ Short term (days) BULLISH. Target 50750+**

The DOW's Ending Diagonal count remained our preferred count over the past several days and has proven to be the correct POV (BINGO AGAIN!).

Thus, the overlapping W-iii of W-5 is underway, subdividing into an a-b-c. W-c of W-iii is now underway. A 3<sup>rd</sup> wave in an ED tends to target the 123.60% extension of W-i (~\$50,500 in this case), and we can see how the c=a (100% extension) sits at \$50,525. Picture-perfect alignment. ALMOST THERE

Thus, contingent on the RAISED warning levels for the Bulls: **49843, 49609, 49307, 49009, and 48708**, we continue to look for ~\$50,750+



**SML Outlook: Long-term (years) BULLISH Target 1750+ Intermediate term (months) BEARISH Target ~1475+ Mid-term (weeks) NEUTRAL. Short term (days) NEUTRAL.**

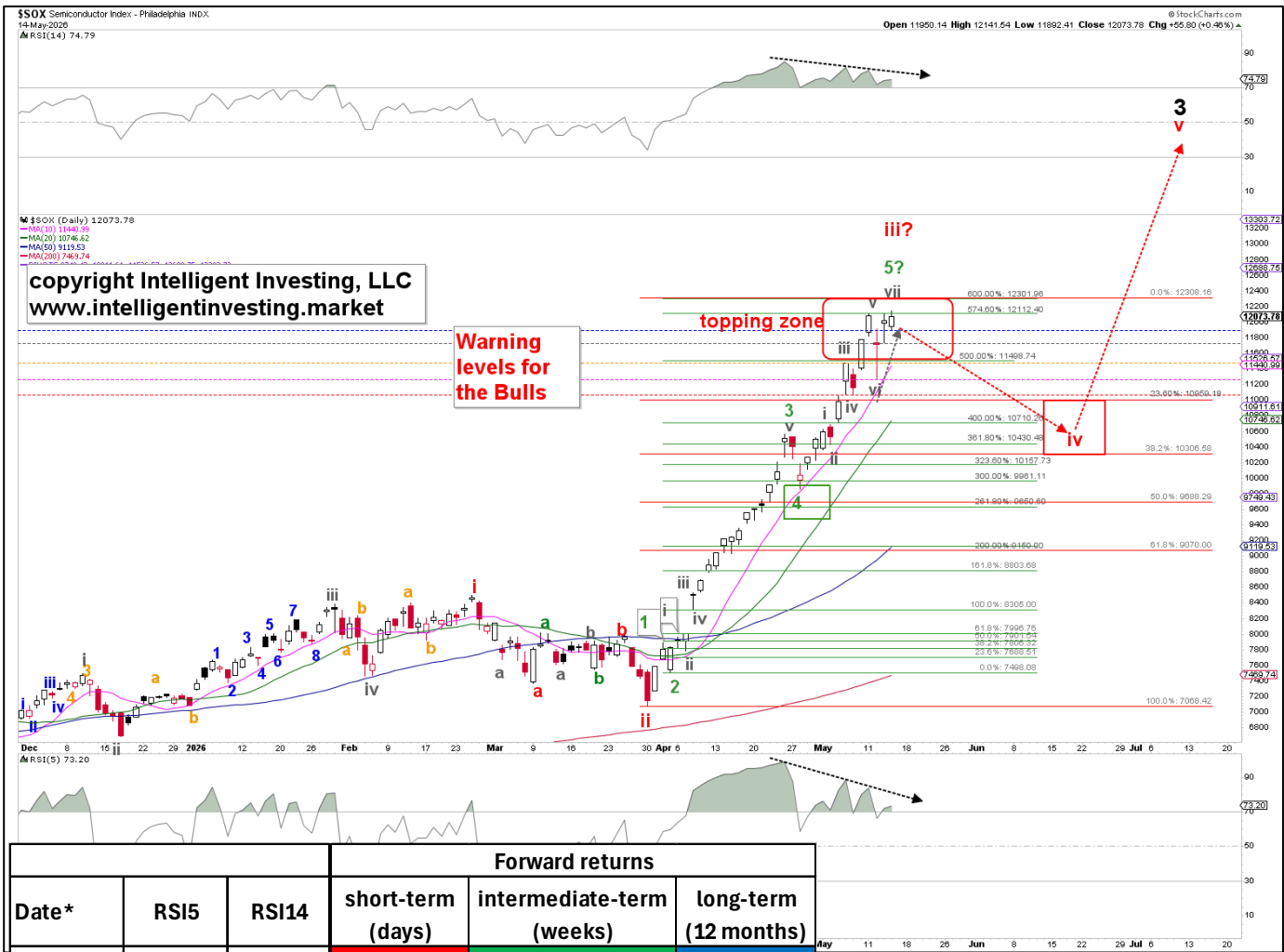
**FIRST INDEX THAT NOW HAS WARNING/RESISTANCE LEVELS FOR THE BEARS**

Our EWP count suggests that **W-v** of **W-5** is complete. We are now tracking the possibility of five (gray) waves lower, which would really help us in putting the “one more wave higher” possibility (not shown) to rest. So the Bear’s warning levels are at **1650, 1665, 1676, 1686, and 1694.**



**SOX Outlook: Long-term (years) BULLISH Target ~15000. Intermediate term (months) BEARISH Target ~9600+ Mid-term (weeks) NEUTRAL. Short term (days) BULLISH Target ~12100+**

No changes as we're tracking the final stages of this rally. Negative divergences on the RSIs are palpable, but as long as the RAISED warning/support levels for the Bulls at **11892**, **11739**, **11477**, **11263**, and **11075** hold, we must allow for higher prices (12300ish, ideally, barring yet another extension).



Date*	RSI5	RSI14	Forward returns		
			short-term (days)	intermediate-term (weeks)	long-term (12 months)
23-May-95	97.7	87.9	-11%	30%	-40%
4-Dec-96	93.1	83.7	-6%	67%	-2%
16-Jul-97	97.1	81.7	-8%	10%	-39%
23-Nov-98	96.8	84.9	-7%	-33%	80%
17-Jan-11	98.1	87.2	-5%	5%	-29%
6-Nov-17	91.5	83.5	-8%	11%	-19%
24-Apr-26	98.7	85.1	-6.7%	14.6% TD	???
<b>Average</b>			<b>-7%</b>	<b>15%</b>	<b>-8%</b>
<b>Average without 1998</b>			<b>-7%</b>	<b>25%</b>	<b>-26%</b>

\*Orange dates mean either the RSI5 (>95.0) or the RSI14 (>83.5) reached the threshold, but not both

Note how the current market continues to follow the historical expectations.

**SPX Outlook: Long-term (years) BULLISH Target ~8000. Intermediate term (months) BEARISH Target ~6700. Mid-term (weeks) NEUTRAL. Short term (days) NEUTRAL**

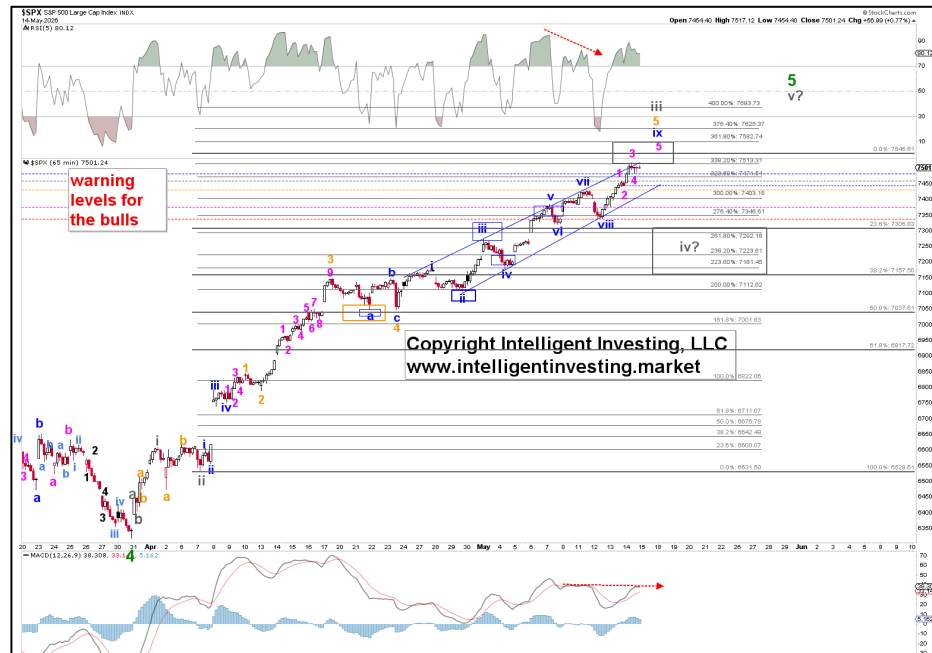


We are aware that we have kept our outlooks for the mid-term and short-term at neutral for a while, but that is primarily because A) the extraordinary extension of the wave, and B) the 4<sup>th</sup> wave will erase most of the short-term gains. However, neutral is not bearish!

Namely, in our write-ups, we kept looking for higher prices, and now even 7490 has been exceeded. Impressive to say the least. So now that we're in the 300% zone for the Fib-extensions, we set our sights on the 338.2-361.8% zone: 7535-7605. Thus, a subdividing **W-ix** of **W-5** of **W-iii** is still underway, and the Bulls' warning/support levels can be raised to **7460, 7428, 7375, 7338, and 7272** on the daily chart.

On the hourly chart, these levels are now at **7484, 7460, 7428, 7375, and 7338**.

The grind can continue higher for longer until key warning/support levels are broken and a local top is established. But, when **W-iii** completes, we still expect a **W-iv** down to ideally \$7225 +/- 50, before **W-v** targets ideally \$7600-7700, which gets the index very close to the ideal 161.80% extension for **W-3** at \$7760.





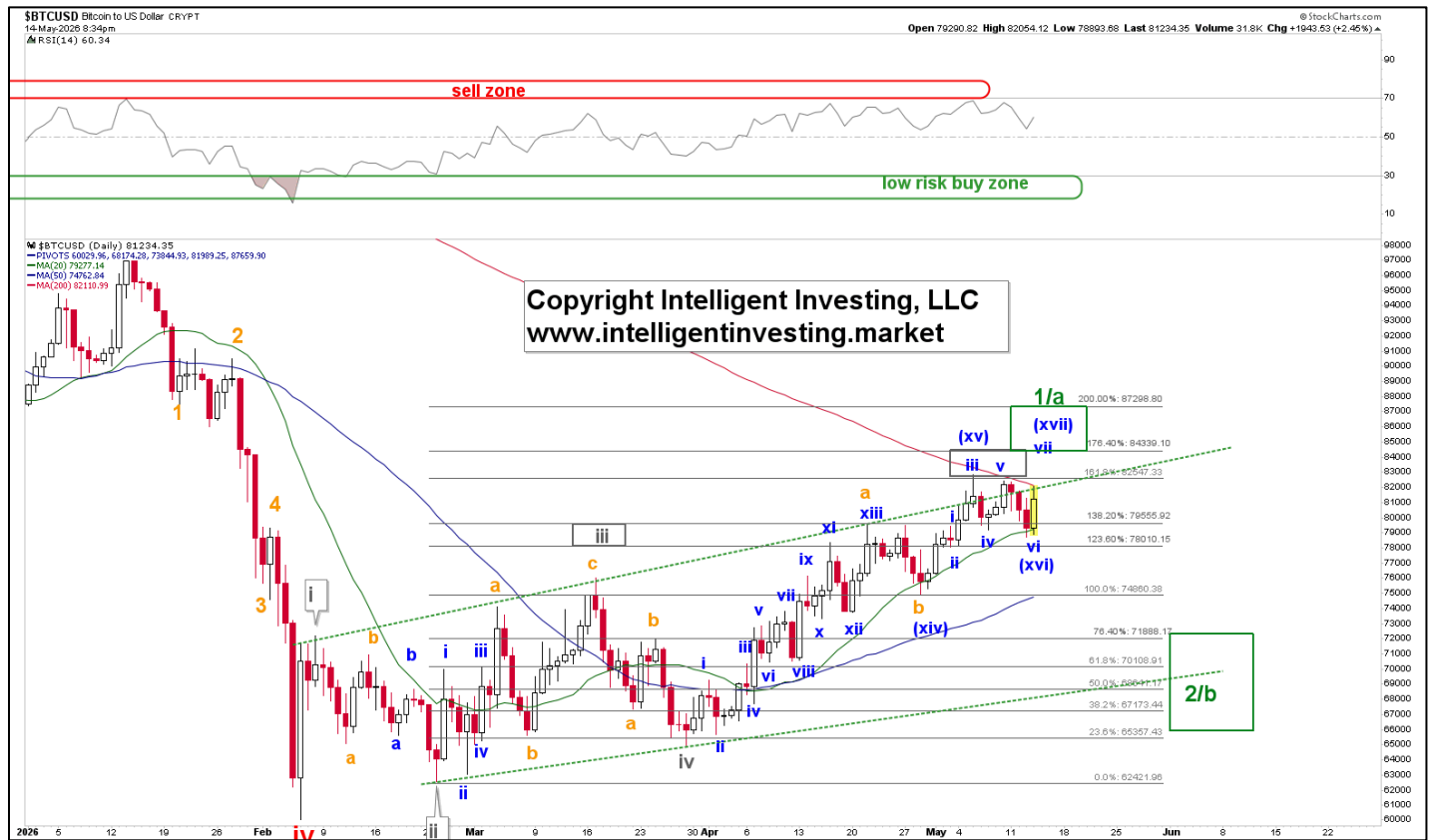
# CRYPTO CURRENCIES

**BTC Outlook: Long-term (years) BULLISH Target ~164K+. Intermediate term (months) BULLISH ~95K. Mid-term (weeks) NEUTRAL. Short term (days) NEUTRAL.**

Today's higher prices can be interpreted as part of our 1<sup>st</sup> option: **W-v** of **W-1/a** is underway. We still have no way of knowing if this is true, because BTC hasn't closed at a new uptrend high yet, while remaining confined in its uptrend channel and below its (Red) 200-d SMA. The warning/support levels for the Bulls remain at **80719, 79515, 78074, 76288, and 74934** to help tell us that the **W-2/b** is underway.

Thus, we remain NEUTRAL for the mid- to short-term. A breakdown below \$78000 or a breakout above \$82475 is still required to set the next short-term to mid-term trend. Meanwhile, the (green) 20d SMA continues to hold, while the 200d SMA is resistance. Above the latter targets the green target zone, whereas loss of the 20d SMA targets the rising 50D SMA, which is now at \$74762.

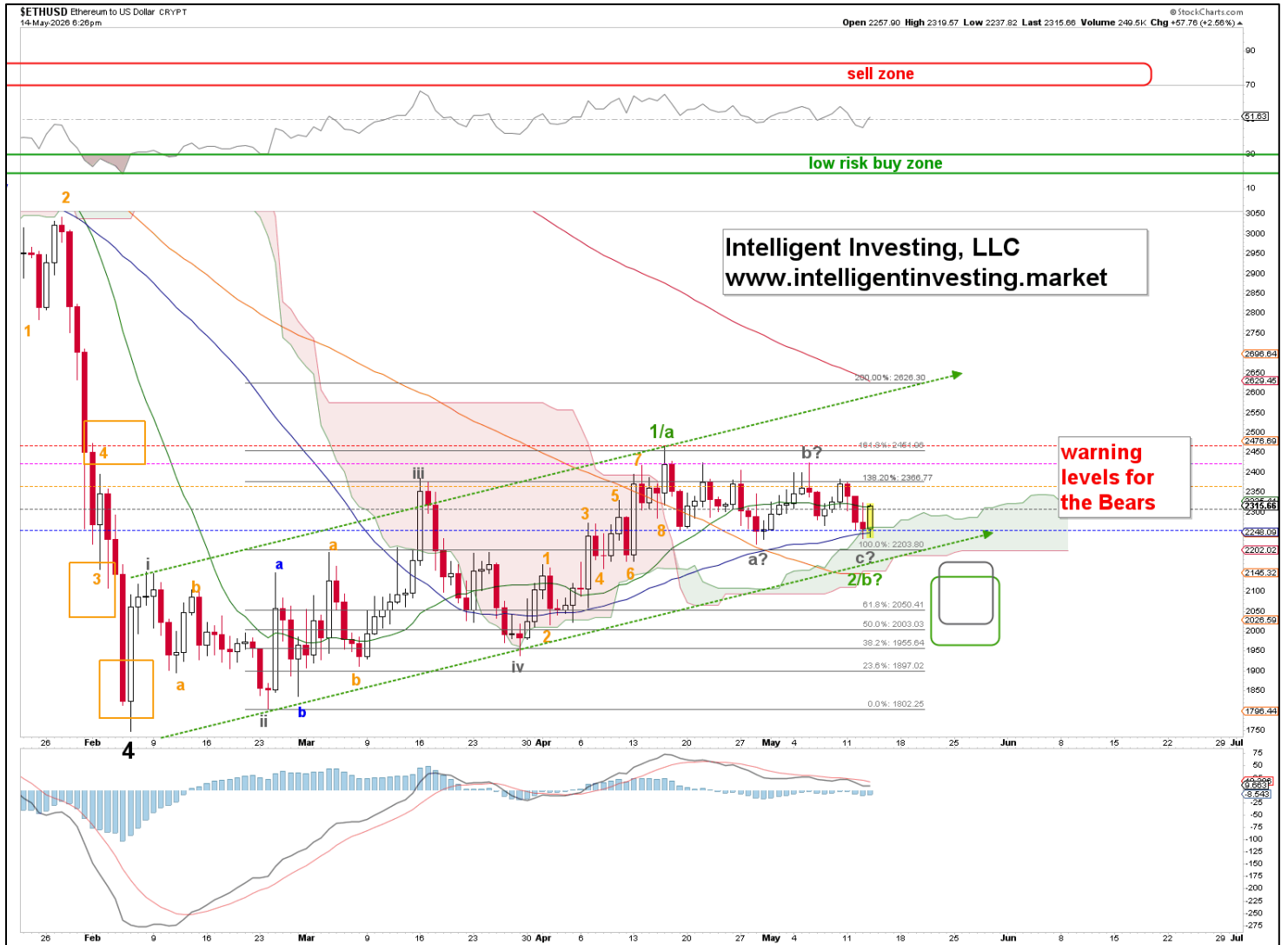
NOTE: NEUTRAL IS NOT BEARISH! Just means we still don't see much movement to either side over those time frames.



**ETH Outlook: Long-term (years) BULLISH Target ~9K+. Intermediate term (months) BULLISH ~3.3K. Mid-term (weeks) NEUTRAL. Short term (days) NEUTRAL.**

The **W-2/b** may have bottomed as a sideways flat type of correction. A break above \$2150 will confirm this thesis. Thus, as long as today's low hold we could be gearing up for the next leg higher. Below it and the 20d SMA at 2145 is next.

NOTE: NEUTRAL IS NOT BEARISH! Just means we don't see much movement to either side over those time frames, and so far, there clearly hasn't been any since mid-April.



**RIOT Outlook: Long-term (years) BULLISH Target ~50+. Intermediate term (months) BULLISH ~50. Mid-term (weeks) BULLISH ~30. Short term (days) BULLISH ~27.**

Yesterday we shared the POTENTIAL for a subiding W-v of **W-3**, but today's price action (sideways for the 3<sup>rd</sup> consecutive day) suggests **W-4** is underway. The subdividing option is still possible and back on the table on a direct break above Monday's high, without going below 22.88. Thus, the warning/support levels for the Bulls remain at **24.41**, **23.84**, **23.41**, **22.88**, and **22.33**. So far, RIOT has not even closed below the 1<sup>st</sup> level. Therefore, we have no objective signal of a top yet, though the multi-day sideways price action supports the **W-4** thesis.





**GOLD Outlook: Long-term (years) BULLISH Target ~6500+. Intermediate term (months) BULLISH ~6500+. Mid-term (weeks) BULLISH ~5300+. Short term (days) BULLISH ~5300+.**

Fine-tuning to a W-i/a, W-ii/b of W-3/c count, while the warning/support levels for the Bulls remain at **94680**, **4640**, **4595**, **4545**, and **4495**. Until those support levels break, we're just at the "40% chance level"; we must still allow for this W-3/c push to continue. W-ii/b should ideally target \$4600+/-50.



**BRENT Outlook: Long-term (years) BULLISH Target ~280. Intermediate term (months) BULLISH. Target ~150+. Mid-term (weeks) BULLISH. Target 150+ Short-term (days) BULLISH. Target 150+**

**NO CHANGES FROM YESTERDAY:**

W-i of W-3 has likely ended, and W-ii, ideally to \$101 +/- 1, is underway before W-iii to new highs kicks in. As such, we can keep the warning/support levels for the Bulls at **107, 103, 101, 99, and 96**, which will serve as an early signal that upside targets will not be reached.



## ETF TRADE ALERTS\*

- Short-term System (EoD): Hold time is days to weeks. The trading signal is generated at the EoD.
- Intermediate-term System (EoW): Hold time is weeks to months. The trading signal is generated at the EoW.
- Long-term System (EoM): Hold time is months to years. The trading signal is generated at the EoM.

Green = BUY or SELL,

Purple = Open Position (HOLD),

Yellow = prior action . BUY or SELL),

White = Stay in cash

### DOW JONES\* (DIA, other ETFs are DDM, UDOW)

- Short-term On 05/14: HOLD the position bought 04/01. Buy signal given at 46565.74. UP 7.5%
- Intermediate-term on 05/08: HOLD the position bought 04/17. BUY signal was given at 49447.43. UP 0.2%

### NDX\* (QQQ, other ETFs are QLD, TQQQ)

- Short-term On 05/14: HOLD the position bought 04/06. Buy signal was given at 24192.17. UP 22.3% (!)
- Intermediate-term on 05/08: HOLD the position bought 04/10. BUY signal was given at 25116.34. UP 16.2% (!)

### S&P500\* (SPY, other ETFs are SSO, SPXL)

- Short-term On 05/14: HOLD the position bought 05/08. Signal given at 6575.32. UP 14.1%(!)
- Intermediate-term on 05/08: HOLD the position bought 04/17. BUY signal was given at 7126.06. UP 8.5%

### SEMI-CONDUCTORS\* (SOXX, other ETFs are USD, SOXL).

- Short-term On 05/14: HOLD the position bought 04/01. Buy signal given at 7802.31. UP 54.5% (!)
- Intermediate-term on 05/08: HOLD the position bought 04/10. BUY signal given at 8889.83. UP 32.3% (!)

### S&P600 Small Cap\* (IWM, other ETFs are UWM, TNA).

- Short-term On 05/14: Stay in cash and wait for a new buy signal.
- Intermediate-term on 05/08: HOLD the position bought 04/10. BUY signal was given at 1584.15 UP 6.1%.

### Bitcoin\* (IBIT)

- Short-term On 05/14: HOLD the position bought 05/08. Buy signal was given at 44.47. UP 4.2%
- Intermediate-term on 05/08: HOLD the position bought 04/17. BUY signal was given at 43.94. UP 3.8%

### Ethereum\* (ETHE)

- Short-term On 05/14: Stay in cash and wait for a new buy signal.
- Intermediate-term on 05/08: HOLD the position bought 04/17. BUY signal was given at 19.74. DOWN 5.0%

## MAGNIFICENT 7+ TRADE ALERTS\*

- Short-term System (EoD): Hold time is days to weeks. The trading signal is generated at EoD.
- Intermediate-term System (EoW): Hold time is weeks to months. The trading signal is generated at EoW.
- Long-term System (EoM): Hold time is months to years. The trading signal is generated at EoM.

Green = BUY or SELL,

Purple = Open Position (HOLD),

Yellow = prior action . BUY or SELL),

White = Stay in cash

### AAPL\*

- Short-term On 05/14: HOLD the position bought 03/31. Buy signal given at 253.79. UP 16.7% (!)
- Intermediate-term on 05/08: HOLD the position bought 04/10. Signal given at 260.48. UP 12.5% (!)

### AMZN\*

- Short-term On 05/14: SELL the position bought 05/13. Buy signal given at 270.13. DOWN 1.1%
- Intermediate-term on 05/08: Stay in cash and wait for a new buy signal.

### GOOG\*

- Short-term On 05/14: HOLD the position bought 04/01. Buy signal given at 294.90. UP 34.8% (!)
- Intermediate-term on 05/08: HOLD the position bought 04/10. BUY signal was given at 238.38. UP 25.5% (!)

### META\*

- Short-term On 05/14: Stay in cash and wait for a new buy signal.
- Intermediate-term on 05/08: SELL the position bought 04/10. BUY signal was given at 629.65. DOWN 3.2%.

### MSFT\*

- Short-term On 05/14: Stay in cash and wait for a new buy signal.
- Intermediate-term on 05/08: HOLD the position bought 04/17. BUY signal was given at 422.79. DOWN 2.0%

### NFLX\*

- Short-term On 05/14: Stay in cash and wait for a new buy signal.
- Intermediate-term on 05/08: Stay in cash and wait for a new buy signal.

### NVDA\*

- Short-term On 05/14: HOLD the position bought 05/06. Buy signal was given at 207.65. UP 13.5%
- Intermediate-term on 05/08: HOLD the position bought 04/10. BUY signal was given at 188.74. UP 14.0%

### TSLA\*

- Short-term On 05/14: Hold the position bought 05/08. Signal given at 390.82. UP 13.5% (!)
- Intermediate-term on 05/08: HOLD the position bought 05/01. Buy signal was given at 390.82. UP 8.9%

# CRYPTOS TRADE ALERTS \*

*This is a working document because cryptocurrencies trade 24/7, 365 days a year. Check back daily around 4:30 pm PST to see if any signals have been generated. We also aim to provide timely daily updates on weekends, but personal circumstances may prevent this. We appreciate your patience and understanding.*

- Short-term System (EoD): Hold time is days to weeks. The trading signal is generated at EoD.
- Intermediate-term System (EoW): Hold time is weeks to months. The trading signal is generated at EoW.
- Long-term System (EoM): Hold time is months to years. The trading signal is generated at EoM.

Green = BUY or SELL,

Purple = Open Position (HOLD),

Yellow = prior action . BUY or SELL),

White = Stay in cash

## **BinanceCoin (BNB)\***

- Short-term On 05/14 HOLD the position bought 05/05. Buy signal was given at 630.06. UP 7.7%
- Intermediate-term On 05/10 BUY a position. Signal given at 665.03

## **Bitcoin (BTC)\***

- Short-term On 05/14 BUY a position. Buy signal given at 81164.
- Intermediate-term On 05/10 HOLD the position bought 04/19. Buy signal was given at 73824.27. UP 11.6%

## **ChainLink (LINK)\***

- Short-term On 05/14 HOLD the position bought 05/04. Buy signal was given at 9.36. UP 12.9%
- Intermediate-term On 05/10 HOLD the position bought 04/26. Buy signal was given at 9.49. UP 13.5%

## **Ethereum (ETH)\***

- Short-term On 05/14: Stay in cash and wait for a new buy signal.
- Intermediate-term On 05/10 HOLD the position bought 04/19. Buy signal was given at 2263.90. UP 2.0%

## **Solana (SOL)\***

- Short-term On 05/14 HOLD the position bought 05/05. Buy signal was given at \$86.28. UP 6.8%
- Intermediate-term On 05/10 BUY a position. Signal given at 96.38.

## **TRON (TRX)\***

- Short-term On 05/14 HOLD the position bought 05/08. Buy signal was given at 0.3269. UP 8.3%
- Intermediate-term On 05/10 HOLD the position bought 03/22. Buy signal was given at \$0.318. UP 13.1%

## \*BACKTESTED TRADING SYSTEM PERFORMANCES

Our new trading systems work best by applying the compounding principle, which involves reinvesting some or all of your profits in the next trade. The more you compound, the better the returns will be. Please review the tables below.

Do not trade positions bought without the system's signals using the system's trading signals. Additionally, please refrain from entering a position when the trade is already in progress; wait for a new trading signal.

These systems operate entirely independently of our analyses. Do not try to combine or correlate them. They track prices and trends based on several parameters, triggering buy, sell, or hold signals via if/then conditions. Sometimes our analysis is correct while the system is wrong, or vice versa. Or both can be right or wrong. Therefore, these systems complement our analyses and represent the ultimate trading experience: simply execute the signal. Refer to the previous page for what trading really is: a mindless, boring process of execution. Nothing more, nothing less.

**The code for these trading systems is available for purchase. Please contact us for pricing details. It is written in Pine Script and can be directly integrated into TradingView, Alpaca, or Interactive Brokers (IBKR), allowing it to manage all your trading needs. Any AI, such as GROK or ChatGPT, can quickly translate code into another language if necessary.**

Year: 2025	SYSTEM					
Index	Short-term	Intermediate-term	Long-term*	Buy-n-Hold (2025)	Long-term**	Buy-n-Hold (2023-25)
SPX	8.5%	16.3%	15.8%	16.4%	43.5%	77.6%
NDX	10.5%	19.4%	18.3%	20.2%	69.1%	128.6%
DOW	4.5%	14.9%	9.0%	13.0%	27.2%	45.1%
SOX	20.9%	64.7%	27.7%	42.2%	85.8%	175.4%
* Only one trade (long entry) was executed in 2025						
**Backtesting from 01-01-2023, as the first long trade closed in March 2025 but was entered in 2023						

Year: 2025	SYSTEM			
STOCK	Short-term	Intermediate-term	Long-term*	Buy-n-Hold (2025)
AAPL	-11.4%	1.8%	18.0%	9.1%
AMZN	-1.5%	-8.7%	46.2%	5.2%
GOOGL	37.4%	89.6%	91.2%	66.0%
META	16.7%	17.6%	119.0%	13.1%
MSFT	9.1%	13.0%	26.2%	15.6%
NFLX	12.9%	11.1%	116.2%	5.3%
NVDA	14.1%	51.5%	157.6%	38.9%
TSLA	18.1%	26.4%	100.9%	11.4%

Year: From Inception	SYSTEM			
Index	Short-term	Intermediate-term	Long-term	Buy-n-Hold
SPX	278587.0%	211376.0%	319189.0%	154122.2%
NDX	1484.0%	6417.0%	11477.0%	20375.2%
DOW	2233433.0%	202999.0%	90204.0%	117126.8%
SOX	6265.0%	5739.4%	16174.8%	3226.1%

*\*Past performance is no guarantee of future results. The trading systems' signals are derived from data believed to be accurate, but such accuracy or completeness cannot be guaranteed. It should not be assumed that such signals, past or future, will be profitable, equal past performance, or ensure future performance or trends, primarily since a human writes these emails and may contain errors and omissions. LAST GENERATED 05/08/2026.*

## REFERAL PROGRAM

*Thank you for being a loyal member.*

*We've simplified our referral program to make it much more rewarding: Share the referral link below with friends, family, or colleagues. When they sign up and become a paid member, you both get 50% off for the two months. The more you refer, the more you save!*

*Your unique referral links:*

**DAILY NEWSLETTER:** [https://www.paypal.com/cgi-bin/webscr?cmd=\\_s-xclick&hosted\\_button\\_id=7QY6NWS2UN4H8](https://www.paypal.com/cgi-bin/webscr?cmd=_s-xclick&hosted_button_id=7QY6NWS2UN4H8).

**MONTHLY NEWSLETTER:** [https://www.paypal.com/cgi-bin/webscr?cmd=\\_s-xclick&hosted\\_button\\_id=JB4CNBDCE292U](https://www.paypal.com/cgi-bin/webscr?cmd=_s-xclick&hosted_button_id=JB4CNBDCE292U)

*It only takes a few seconds to share. Many of our best long-term members came through personal recommendations from people like you.*

*If you have any questions, just email us.*

*Best regards,*

*Arnout & Team*

**THIS COPYRIGHTED MATERIAL IS INTENDED SOLELY FOR USE BY DESIGNATED RECIPIENTS. NO REPRODUCTION, RETRANSMISSION, OR OTHER USE OF THE INFORMATION OR IMAGES IS AUTHORIZED. LEGITIMATE NEWS MEDIA MAY QUOTE REPRESENTATIVE PASSAGES TO REPORT ON MY OPINIONS IN CONTEXT AND WITH FULL ATTRIBUTION. THE ANALYSIS IS DERIVED FROM DATA BELIEVED TO BE ACCURATE, BUT THE ACCURACY OR COMPLETENESS OF THAT DATA CANNOT BE GUARANTEED. IT SHOULD NOT BE ASSUMED THAT OUR ANALYSIS, PAST OR FUTURE, WILL BE PROFITABLE, EQUAL PAST PERFORMANCE, OR GUARANTEE FUTURE PERFORMANCE OR TRENDS. ALL TRADING AND INVESTMENT DECISIONS ARE THE SOLE RESPONSIBILITY OF THE READER. INCLUDING INFORMATION ABOUT MANAGED ACCOUNTS, PROGRAM POSITIONS, AND OTHER INFORMATION IS NOT INTENDED TO BE A RECOMMENDATION OR SOLICITATION. FOR MORE INFORMATION, CONTACT INTELLIGENT INVESTING, LCC AT [INFO@INTELLIGENTINVESTING.MARKET](mailto:INFO@INTELLIGENTINVESTING.MARKET). WE RESERVE THE RIGHT TO REFUSE SERVICE TO ANYONE FOR ANY REASON.**