

# INTELLIGENT INVESTING

## DAILY NEWSLETTER

STOCK MARKETS, CRYPTOS, GOLD, MINERS & OIL  
ETF, CRYPTO & MAGNIFICENT 7+ TRADE ALERTS



**BY DR. ARNOUT TER SCHURE & ASSOCIATES, 12/23/2025**

THIS IS A WORKING DOCUMENT. ONCE THE LINK HAS BEEN EMAILED OUT, YOU CAN CHECK BACK AT ANY TIME USING THAT LINK TO SEE IF IT HAS BEEN UPDATED BY CHECKING THE TIMESTAMP: **VERSION 1, LAST UPDATED ON 12/23 AT 1:55 PM PST**

# TABLE OF CONTENTS

All our posts on X, which often include bonus charts and trade setups, are available [here](#).

<b>STOCKMARKETS</b>	II
SP500	II
NDX	III
DOW	IV
SOX	V
SMALL CAPS	VI
 <b>CRYPTO CURRENCIES (MUST READ!)</b>	VII
BITCOIN	VIII
ETHEREUM	IX
 <b>GOLD, MINERS &amp; OIL</b>	X
OIL, BRENT	X
GDX, GDXJ	XI
 <b>ETF TRADE ALERTS</b>	XII
<b>MAGNIFICENT 7+ TRADE ALERTS</b>	XIII
<b>CRYPTO TRADE ALERTS</b>	XVI
 <b>TRADING IS BORING – JUST THESE RULES, MA’AM</b>	XV
<b>BACKTESTED TRADING SYSTEM PERFORMANCES</b>	XVI
<b>REFERAL PROGRAM</b>	XVII

# STOCKMARKETS

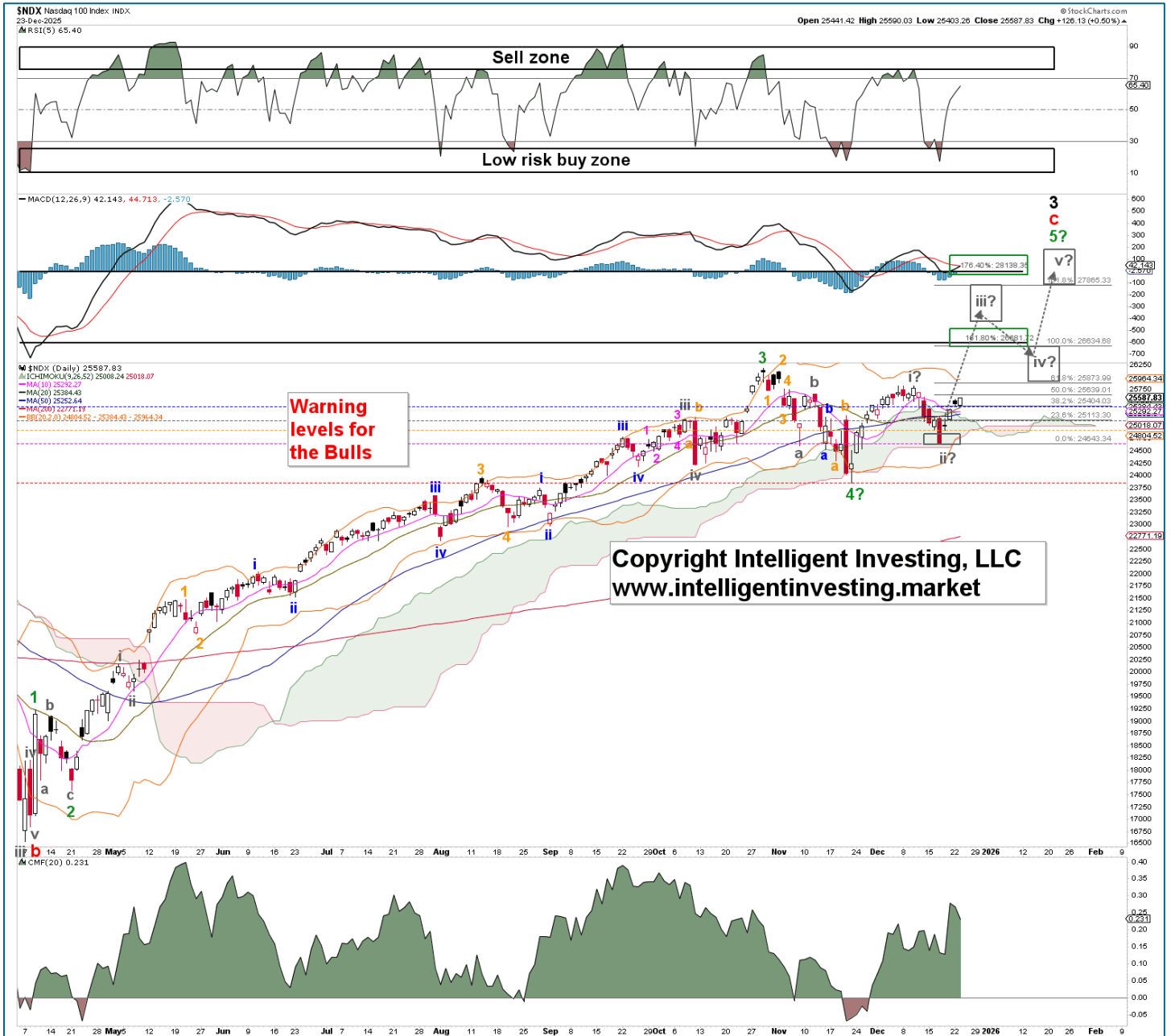
**SP500 Outlook: Bullish. Invalidation: 6521. Support: 6600. Resistance: 6900. Target: 7120-7760.**

The index continues to move in the preferred direction for the **W-iii**: up. Thus, we continue to assume that for as long as last week's low holds, the **W-iii** is underway. We can therefore raise the Bulls' warning levels on the daily chart to: **6868, 6840, 6792, 6758, 6720**. Here, the standard impulse pattern is shown but be aware that **W-5** can also morph into an overlapping ending diagonal, as in the DOW and SML.



## NDX Outlook: Bullish. Invalidation: 23854. Support: 24545. Resistance: 25830. Target: 26680-28140.

The index continues to move in the preferred direction for the **W-iii**: up. Thus, we continue to assume that for as long as last week's low holds, the **W-iii** is underway. Since today's low was 2p above yesterday's low, we keep the Bulls' warning levels on the daily chart the same **25401**, **25134**, **24921**, **24647**, **23854**. Here, the standard impulse pattern is shown but be aware that **W-5** can also morph into an overlapping ending diagonal, as in the DOW and SML.



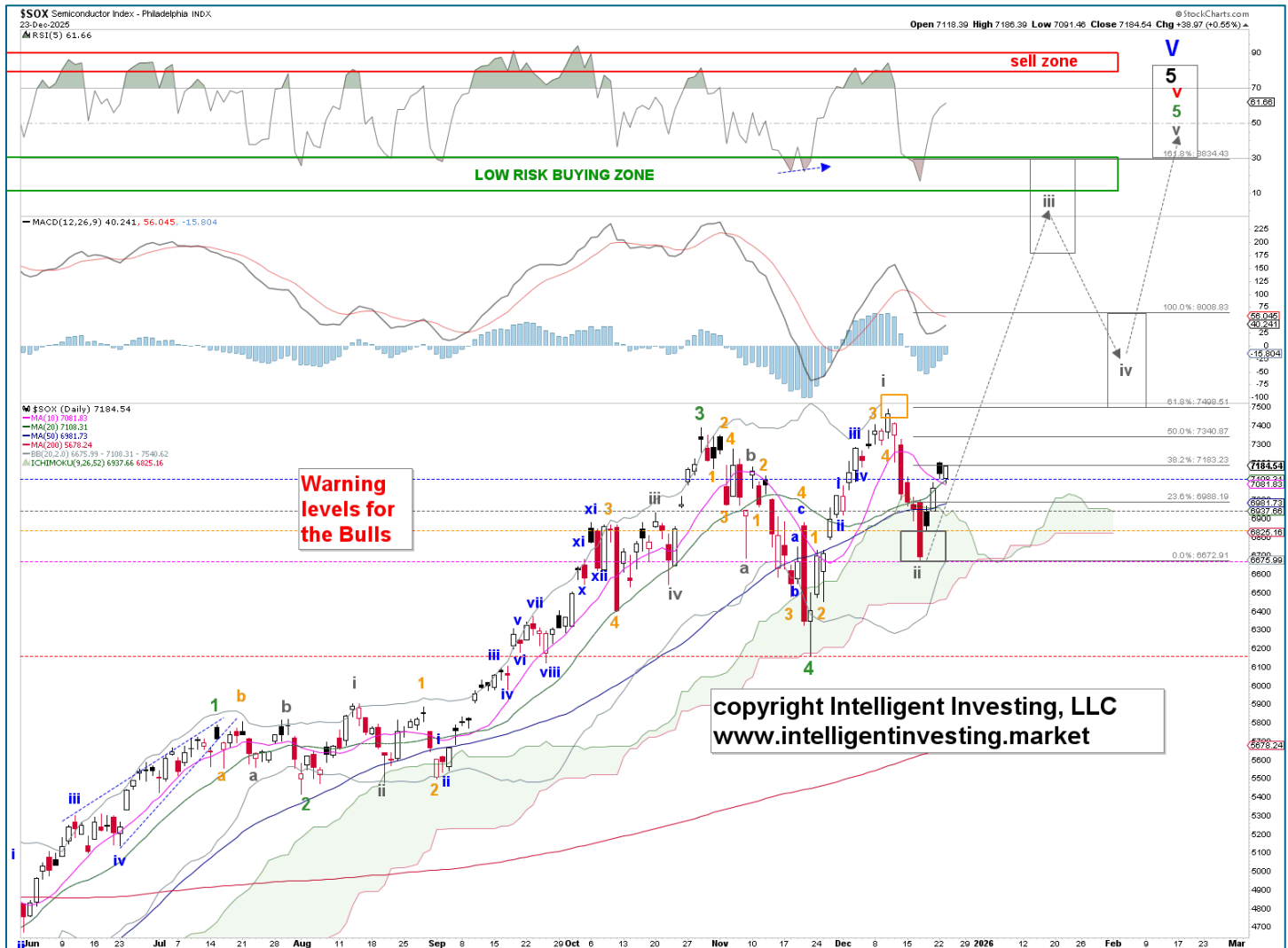
## DOW Outlook: Bullish. Invalidation: 45728. Support: 47200. Resistance: 48500. Target: 49250-54000

The 7<sup>th</sup> wave (gray W-vii) of the “ending diagonal (EDs) 5<sup>th</sup> wave,” should now be underway, while “the ideal target remains at \$49250-49750, with the possibility of \$ 52-54K.” Thus, the Bulls’ warning levels are adjusted to: **48254**, **47849**, **47462**, **47112**, **45728**. Please see the SMLL for more details on how this ED may unfold.



## SEMI Outlook: Bullish. Invalidation: 6160. Support: 6500. Resistance: 7400. Target: 8250+/-250

The index continues to move in the preferred direction for the **W-iii**: up. Thus, we continue to assume that for as long as last week's low holds, the **W-iii** is underway. With today's low below yesterday's low, we must keep the Bulls' warning levels on the daily chart as is: **7120**, **6942**, **6831**, **6680**, and **6160**. Here, the standard impulse pattern is shown but be aware that **W-5** can also morph into an overlapping ending diagonal, as in the DOW and SML.



## SMALL Outlook: Bullish. Invalidation: 1364. Support: 1490. Resistance: 1540. Target: 1650+/-50

The **W-c** of the **W-iii** of the ending diagonal **W-5**, ideally targeting 1580-1600, is most likely underway. The Bulls' warning levels are now adjusted to **1499**, **1486**, **1472**, **1456**, and **1430**. Note that we now have five warning levels, reducing the odds of continued upside by 20% for each breached level. We won't get too concerned about the uptrend until the orange level is broken.





# CRYPTO CURRENCIES

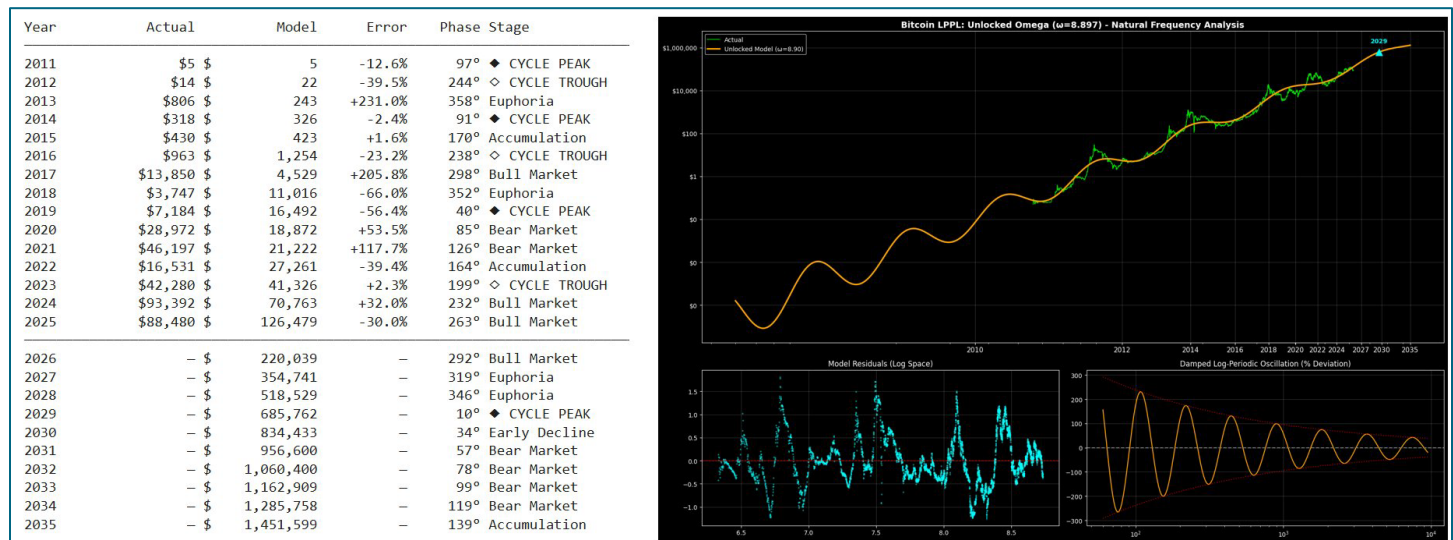
**Interesting Post on X today:** An excellent, and we believe a never-before-seen analysis was posted recently by @david\_eng\_mba, “*The Physics of Price: Rigorous Mathematical Proof of a \$600k Bitcoin Super-Cycle.*”

Although it is somewhat technical, it is a must-read.

The bottom line is that this Bull market since the 2022 low can continue into 2029, targeting \$600K, which aligns reasonably well with our annual bar analysis. “*If 2025 ends down for the year, the previous annual patterns suggest a 2-3 year continued bull market,*” which targets 2027-2028.

[https://x.com/david\\_eng\\_mba/status/2002846058628665568?s=20](https://x.com/david_eng_mba/status/2002846058628665568?s=20)

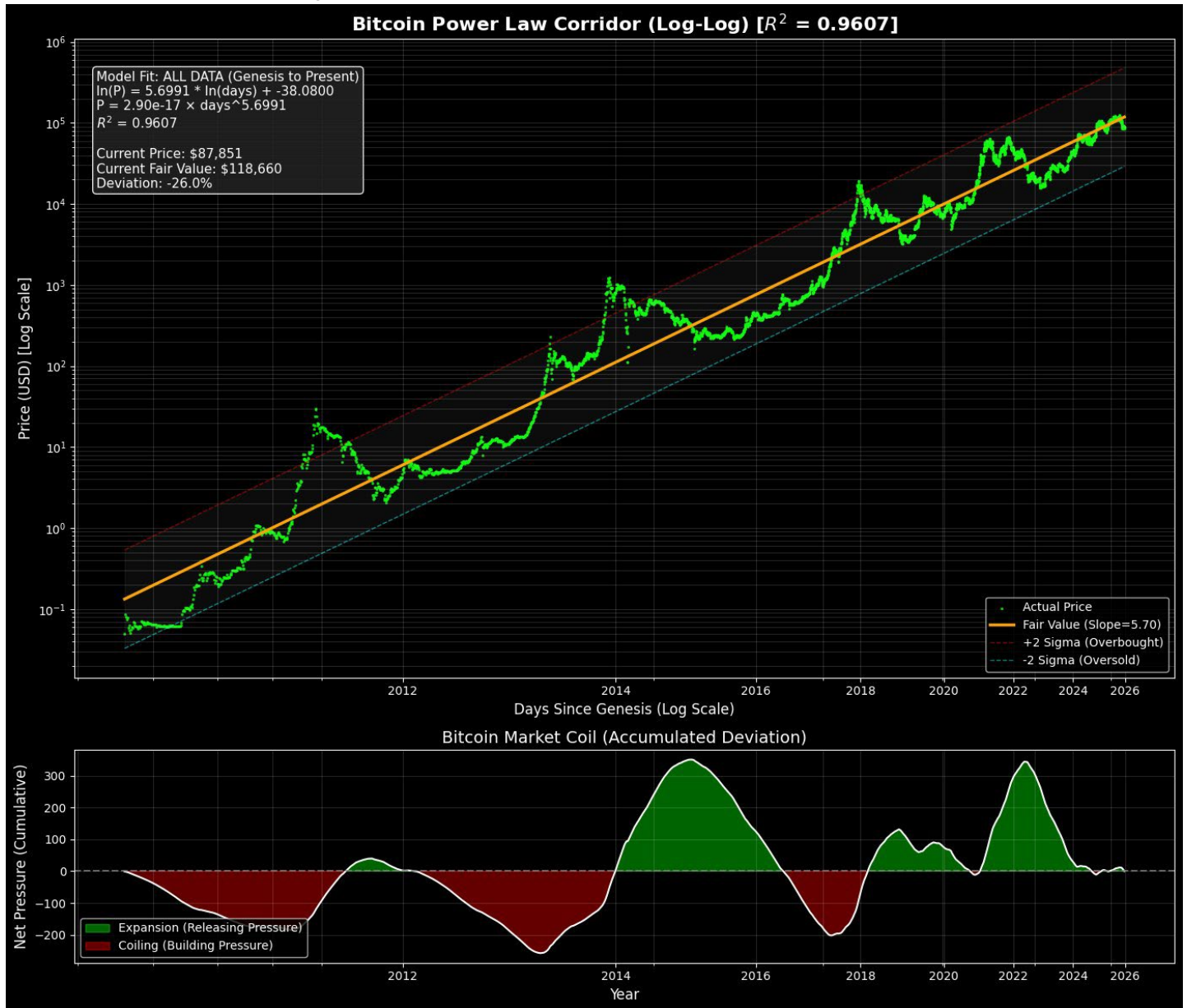
[https://x.com/david\\_eng\\_mba/status/2003303984572850401?s=20](https://x.com/david_eng_mba/status/2003303984572850401?s=20)





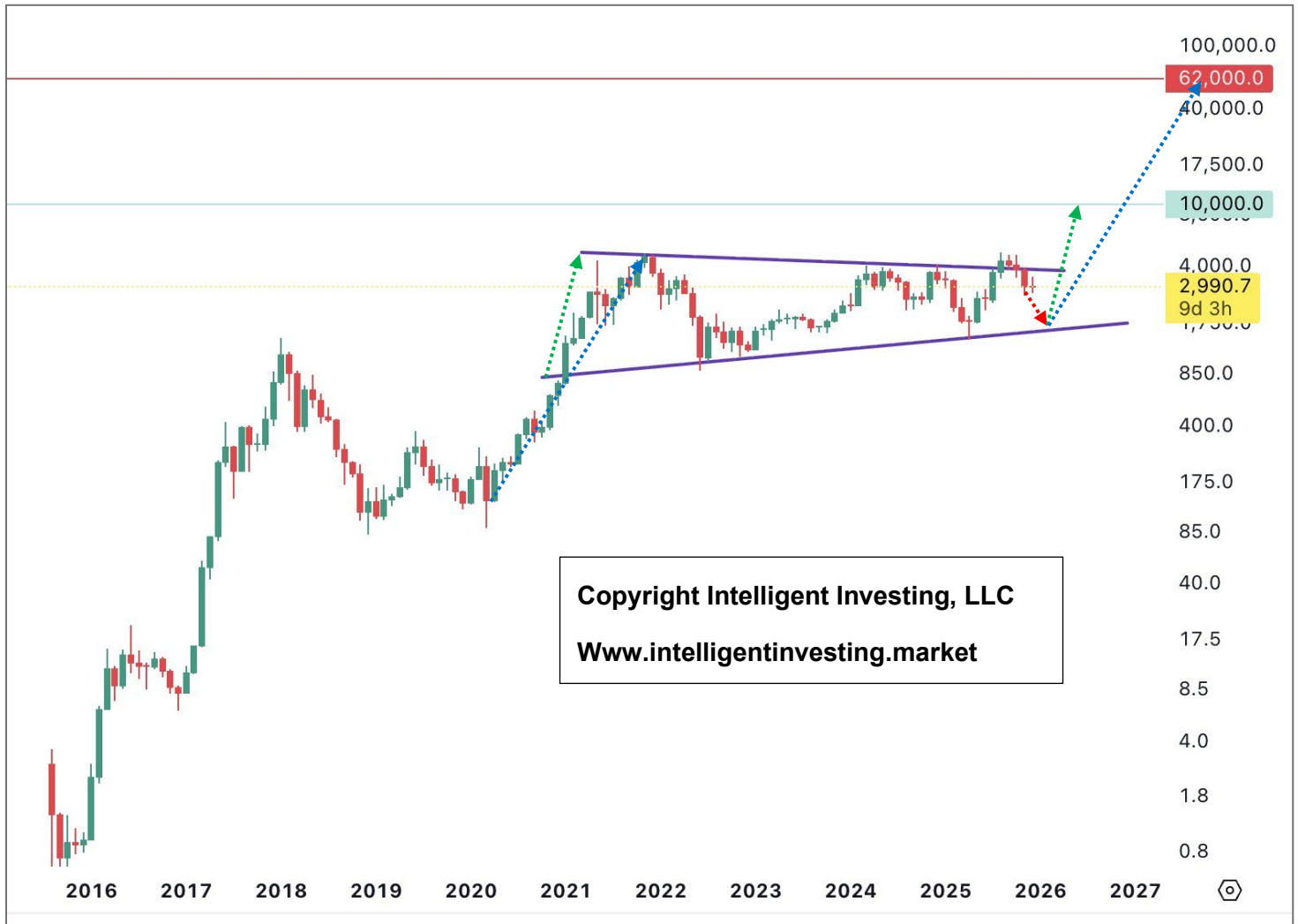
## BTC Outlook: neutral. Invalidation: 73802. Support: 76100. Resistance: 94000. Target: 164K

As we head into Christmas, we want to keep it simple, fresh, and new by showing something old ☺. The power-law growth factor for BTC remains unchanged. Yes, a “retest” of the -2 Sigma (Oversold) line is not impossible, but it has only happened after BTC crossed the +2 Sigma (Overbought) line, which is not the case now, as BTC stalled at the mid-line. The  $R^2$  (a measure of fit for the midline) is now 0.9609, which is exceptional and unprecedented in finance. This means that the regression model explains 96% of the variability in BTC's price. For as long as the power law governs Bitcoin's price, as it has, it will deliver a 10x price increase in the next ~8 years. MERRY CHRISTMAS ☺



## ETH Outlook: neutral. Invalidation: 1422. Support: 2530. Resistance: 2790. Target: 1600-1800

As we head into Christmas, we want to keep it simple, fresh, and new by showing something old ☺. Namely, the bull flag pattern remains intact. However, it saw a false breakout and a retest of the lower trendline around \$1700, which aligns with our forecast. A linear extrapolation of the pennant's maximum width and the bull flag's pole length, which has some issues, but it's not disallowed, targets \$10-62K. MERRY CHRISTMAS ☺



# GOLD, MINERS & OIL

## OIL, BRENT Outlook: Bearish. Invalidation: 81.40. Support: 60. Resistance: 64. Target: 50+/-5

Wave **a** of **W-v** has most likely bottomed, and **W-b** is now underway, ideally targeting the declining 200-d SMA, which is currently at \$66. There's some positive divergence on the daily MACD (green arrow), but BRENT must overcome the declining 50d SMA, which is now at ~\$63, before it can get anything more going.

Since we can count five (blue) waves lower to a (marginal) lower low from the gray **W-iv** high, and the decline since that high was 3x the length of **W-i** in time, we could have seen the completion of the correction (**ALT W-v**). However, there's currently insufficient price data to confirm that, as the trend remains firmly down.

Thus, if the December 16 low at \$58.72 holds, we can expect at least a rally to \$64-66 before, ideally, the final leg lower to \$50+/-5 kicks in. BRENT will have to move above the gray **W-iv** low to signal that the low is in, but we'll have plenty of data before then to be much more certain of that option.



**GDX Outlook: Bullish. Invalidation: 42.80. Support: 68.0. Resistance: 104. Target: 92.5+**

**GDXJ Outlook: Bullish. Invalidation: 58.34. Support: 3450. Resistance: 127. Target: 123.75+**



Our bullish outlook for an impulse higher remains correct. Thus, as stated, "...the **W-v** to ideally \$92+/-1" is underway, and it is subdividing into five smaller (orange) waves, with **W-5** now underway. All contingent on the ETF staying above its warning levels.

With today's lower low, the warning levels for the Bulls remain at **89.07**, **84.945**, **83.15**, **81.35**, and **79.07**.

In the bigger picture, we can clearly see the **W-5** underway, as the recent two down months count very well as **W-2** and **W-4**, with W-3 and W-4 topping and bottoming right where they had to! Picture perfect Fib-beauty!

The warning levels indicating that the **W-3** has topped are this month at **83.34**, **78.50**, **75.85**, **71.54**, and **67.64**.



## ETF TRADE ALERTS\*

- Short-term System (EoD): Hold time is days to weeks. The trading signal is generated at the EoD.
- Intermediate-term System (EoW): Hold time is weeks to months. The trading signal is generated at the EoW.
- Long-term System (EoM): Hold time is months to years. The trading signal is generated at the EoM.

Green = BUY or SELL, Purple = Open Position (HOLD), Yellow = prior action . BUY or SELL, White = Stay in cash

### DOW JONES\* (DIA, other ETFs are DDM, UDOW)

- Short-term On 12/23: HOLD the position bought 12/19. The Buy signal was given 48134.89. UP 0.6%
- Intermediate-term On 12/19: HOLD the position bought 05/02. BUY signal given at \$41249. UP 16.7%(!)
- Long-term On 11/28: HOLD the position bought 06/30. BUY signal given at 43948.56. UP 8.3%.

### NDX\* (QQQ, other ETFs are QLD, TQQQ)

- Short-term On 12/23: HOLD the position bought 12/22. The Buy signal was given at 25461.70. Up 0.5%.
- Intermediate-term On 12/19: HOLD the position bought 11/28. Buy Signal was given at 25434.89. DOWN 0.3%.
- Long-term On 11/28: HOLD the position bought 05/30. BUY signal given at \$21340.9. UP 18.9% (!)

### S&P500\* (SPY, other ETFs are SSO, SPXL)

- Short-term On 12/23: HOLD the position bought 12/22. The Buy signal was given at 6878.49. UP 0.5%.
- Intermediate-term On 12/19: HOLD the position bought 11/28. Buy Signal was given at 6849.09. DOWN 0.2%.
- Long-term On 11/28: HOLD the position bought 05/30. BUY signal given at \$5911.69. UP 15.9% (!)

### SEMI-CONDUCTORS\* (SOXX, other ETFs are USD, SOXL).

- Short-term On 12/23: Hold the position bought 12/22. The Buy signal was given at 7145.57. UP 0.6%
- Intermediate-term On 12/19: HOLD the long position bought 05/09 . BUY signal was given at \$4466.50. UP 59.3% (!)
- Long-term On 11/28: HOLD the position bought 06/30. BUY signal given at 5544.92. UP 26.4% (!).

### S&P600 Small Cap\* (IWM, other ETFs are UWM, TNA).

- Short-term On 12/23: HOLD the position bought 12/19. The Buy signal was given 1495.86. UP 0.2%
- Intermediate-term On 12/19: HOLD the position bought 11/28. Buy Signal was given at 1471.61. UP 1.7%
- Long-term On 11/28: HOLD the position bought 08/29. Buy signal was given at 1435.58. UP 2.4%.

### Bitcoin\* (IBIT)

- Short-term On 12/23: Stay in cash and wait for a new signal.
- Intermediate-term On 12/19: Stay in cash and wait for a new buy signal.
- Long-term On 11/28: SELL the IBIT position bought 05/30. BUY signal was given at \$59.46. DOWN 14.1%.

### Ethereum\* (ETHE)

- Short-term On 12/23: Stay in cash and wait for a new signal.
- Intermediate-term On 12/19: Stay in cash and wait for a new buy signal.
- Long-term On 11/28: HOLD the position bought 07/31. BUY signal given at \$30.86. DOWN 19.7%.

## MAGNIFICENT 7+ TRADE ALERTS\*

- Short-term System (EoD): Hold time is days to weeks. The trading signal is generated at EoD.
- Intermediate-term System (EoW): Hold time is weeks to months. The trading signal is generated at EoW.
- Long-term System (EoM): Hold time is months to years. The trading signal is generated at EoM.

Green = BUY or SELL, Purple = Open Position (HOLD), Yellow = prior action . BUY or SELL, White = Stay in cash

### AAPL\*

- Short-term On 12/23: Stay in cash and wait for a new signal.
- Intermediate-term On 12/19: HOLD the position bought on 07/03. BUY signal given at \$213.85. UP 28.1% (!)
- Long-term On 11/28: HOLD the position bought 08/29. BUY signal given at 232.16. UP 19.5% (!)

### AMZN\*

- Short-term On 12/23: HOLD the position bought 12/22. The Buy signal was given at 228.43. UP 1.6%
- Intermediate-term on 12/19: Stay in cash and wait for a new buy signal.
- Long-term On 11/28: HOLD the position bought 05/30. BUY signal given at \$205.01. UP 13.5% (!).

### GOOG\*

- Short-term On 12/23: BUY a position. Signal given at 315.68
- Intermediate-term On 12/19: HOLD the position bought 05/16. BUY signal given at \$167.43. UP 84.3% (!)
- Long-term On 11/28: HOLD the position bought 06/30. BUY signal given at 178.05. UP 79.8% (!)

### META\*

- Short-term On 12/23: HOLD the position bought 12/16. Signal given at 657.15. UP 1.1%
- Intermediate-term on 12/19: Stay in cash and wait for a new buy signal.
- Long-term On 11/28: SELL the position bought 05/30. BUY signal given at \$646.99. DOWN 0.1%.

### MSFT\*

- Short-term On 12/23: HOLD the position bought 12/19. The Buy signal was given 485.06. UP 0.2%
- Intermediate-term on 12/19: Stay in cash and wait for a new buy signal.
- Long-term On 11/38: HOLD the position bought 05/30. BUY signal given at \$460.36. UP 7.1% (!)

### NFLX\*

- Short-term On 12/23: Stay in cash and wait for a new signal.
- Intermediate-term on 12/19: Stay in cash and wait for a new buy signal.
- Long-term On 11/28: HOLD the remaining 1/4 of the full position bought 12/30/'22 (!) and KEEP the stop at \$607.33. Winning trade. (old trading system's signals)

### NVDA\*

- Short-term On 12/23: HOLD the position bought 12/22. The Buy signal was given at 183.69. UP 3.0%.
- Intermediate-term on 12/19: Stay in cash and wait for a new buy signal.
- Long-term On 11/28: HOLD the position bought 05/30. BUY signal given at \$135.13. UP 31.3% (!)

### TSLA\*

- Short-term On 12/19: HOLD the position bought 11/25. The Buy Signal was given 419.40. UP 15.6%
- Intermediate-term On 12/19: HOLD the position bought 11/28. The Buy Signal was given at 428.89. UP 11.9%.
- Long-term On 11/28: HOLD the position bought 05/30. BUY signal given at \$346.46. UP 23.4% (!)



# CRYPTOS TRADE ALERTS \*

*This is a working document since cryptocurrencies trade 24/7, 365 days a year. Check back daily around 4:30 pm PST to see if any signals have been generated. We also try to provide timely daily updates on weekends, but due to personal circumstances, that may not always be possible. We appreciate your patience and understanding.*

- Short-term System (EoD): Hold time is days to weeks. The trading signal is generated at EoD.
- Intermediate-term System (EoW): Hold time is weeks to months. The trading signal is generated at EoW.
- Long-term System (EoM): Hold time is months to years. The trading signal is generated at EoM.

**Green = BUY or SELL, Purple = Open Position (HOLD), Yellow = prior action . BUY or SELL, White = Stay in cash**

## BinanceCoin (BNB)\*

- **Short-term On 12/23:** Stay in cash and wait for a new signal.
- **Intermediate-term System On 12/21:** Stay in cash and wait for a new buy signal.
- **Long-term System On 11/30:** HOLD the position bought 06/30. BUY signal given at \$657.64. UP 36.7% (!)

## Bitcoin (BTC)\*

- **Short-term On 12/23:** Stay in cash and wait for a new signal.
- **Intermediate-term System On 12/21:** Stay in cash and wait for a new buy signal.
- **Long-term System On 11/30:** SELL the remaining 1/4 of the full position bought 03/31/'23 (!). Winning trade.

## ChainLink (LINK)\*

- **Short-term On 12/23:** Stay in cash and wait for a new signal.
- **Intermediate-term System On 12/21:** Stay in cash and wait for a new buy signal.
- **Long-term System On 11/30:** Stay in cash and wait for a new buy signal.

## Ethereum (ETH)\*

- **Short-term On 12/23:** Stay in cash and wait for a new signal.
- **Intermediate-term System On 12/19:** Stay in cash and wait for a new buy signal.
- **Long-term System On 11/30:** SELL the position bought 07/31. Buy signal given at \$3698.19. DOWN 18.1%

## Solana (SOL)\*

- **Short-term On 12/23:** Stay in cash and wait for a new signal.
- **Intermediate-term System On 12/21:** Stay in cash and wait for a new buy signal.
- **Long-term System On 11/30:** SELL the position bought 07/31. Buy signal given at \$172.22. DOWN 20.3%

## TRON (TRX)\*

- **Short-term On 12/23:** HOLD the position bought 12/19. Signal given at 0.2801. UP 1.0%
- **Intermediate-term System On 12/21:** Stay in cash and wait for a new buy signal.
- **Long-term System On 11/30:** HOLD the remaining 1/4 of the full position bought 03/31/'23 (!) and KEEP the stop at \$0.1682. Winning trade (per the old trading system).



## TRADING IS BORING – JUST THE RULES, MA'AM\*

- Short-term results are (more) random than intermediate- to long-term. Focus accordingly.
- An "edge" appears only through repetition.
- Thus, a trader's job is not to win, but to relentlessly repeat the same actions.
- Therefore, a trader doesn't wait for opportunities driven by the urge and desire to trade.
- Your responsibility is to follow the rules, and nothing more.
  - Thus, you act only because
    - *"The opportunity has arrived,"*
    - *"It's the rule,"*
    - *"There is no choice but to act."*
- You don't have the authority to decide *"whether or not to follow that rule."*
- Avoid setting a daily profit target.
  - It is irrelevant to you and beyond your control.
- If you are going to reflect, focus on failing to follow the rules. That will teach you!
- A trading system with a 50-50 win/loss ratio (WLR) and a 2-1 win/loss percentage (% WLP) is still more effective than one with a 90-10 (WLR) and a 1-5 (WLP).
  - It's not about how many trades you win.
  - It's about cutting losers and allowing winners to run.

Did you make a “good trade” today? Well, kudos to you, but if you only looked at the trade's profit to decide whether it was good, you did it all wrong. Specifically, your P/L has nothing to do with that assessment. A profit gained by breaking your rules is the worst trade because it creates a false sense of success in your mind. Conversely, a loss that occurs while perfectly following your rules is a valuable learning experience that helps build a long-term edge.

Unless you can accept this, you haven't truly started trading.

Lastly, the 1<sup>st</sup> rule in trading is to always minimize your losses! Profits are secondary... Know the difference.

\*adapted from “Yumi 🌸, @samuraipips358”

\*\*NOT TRADING ADVICE

## \*BACKTESTED TRADING SYSTEM PERFORMANCES

Our new trading systems work best by applying the compounding principle, which involves reinvesting some or all of your profits in the next trade. The more you compound, the better the returns will be. Please review the table below. All the data for each ETF, CRYPTO, and almost every MAG7+ STOCK is also available [here](#).

Please do not trade positions bought without the system's signals using the system's trading signals. Additionally, please refrain from entering a position when the trade is already in progress; wait for a new trading signal.

These systems operate entirely independently of our analyses. Do not try to combine or correlate them. They track prices and their trends based on several parameters that trigger buy, sell, or hold signals through if/then conditions. Sometimes our analysis is correct while the system is wrong, or vice versa. Or both can be right or wrong. Therefore, these systems complement our analyses and represent the ultimate trading experience: simply execute the signal. Refer to the previous page for what trading really is: a mindless, boring process of execution. Nothing more, nothing less.

The code for these trading systems is available for purchase. Please contact us for pricing details. It is written in Pine Script and can be directly integrated into TradingView, Alpaca, or Interactive Brokers (IBKR), allowing it to manage all your trading needs. Any AI, such as GROK or ChatGPT, can quickly modify the code to another language if necessary.

LONG-ONLY TRADING SYSTEM RETURNS FOR THE INDEXES*					
Time frame	Percentage (%) of equity		Total Trades	Average Gain	Average Loss
	100	50			
S&P500 (SPX)*					
Short-term (Daily)	3081.2%	518.0%	977	2.9%	-1.2%
Intermediate-term (Weekly)	2625.9%	500.2%	205	8.5%	-2.4%
Long-term (Monthly)	6651.3%	910.9%	34	25.2%	-6.0%
NASDAQ100 (NDX)**					
Short-term (Daily)	1451.8%	356.0%	631	4.5%	-1.9%
Intermediate-term (Weekly)	5873.7%	836.3%	111	12.0%	-4.4%
Long-term (Monthly)	11176.2%	1912.2%	22	79.5%	-8.3%
DOW JONES INDUSTRIAL AVERAGE (INDU)***					
Short-term (Daily)	2131926.1%	19362.6%	1812	3.5%	-1.3%
Intermediate-term (Weekly)	202979.1%	6350.4%	377	9.7%	-2.5%
Long-term (Monthly)	90192.3%	4536.4%	81	26.3%	-5.8%
*Since Inception (March 1957)	**Since Inception (January 1985)		***Since Inception (May 1896)		
*BACKTESTING PERFORMED ON DATA SINCE INCEPTION AND ENDING 09/08/2025					

LONG-ONLY TRADING SYSTEM RETURNS FOR BITCOIN AND ETHEREUM UNTIL 09/08/2025			
Time frame (Resolution)	Percentage (%) of equity		Total Trades
	100	50	
Bitcoin (BTC)*			
Short-term (Daily)	1374256%	47330%	280
Intermediate-term (Weekly)	4051319%	121198%	37
Long-term (Monthly)	508225%	110685%	5
Ethereum (ETH)**			
Short-term (Daily)	272699%	20817%	214
Intermediate-term (Weekly)	214829%	31358%	31
Long-term (Monthly)	10317%	7631%	10
*Since data available (August 2011) via BITSTAMP		**Since data available (August 2015)	

LONG-ONLY TRADING SYSTEM RETURNS FOR THE MAG 7+ STOCKS*					
Time frame	Percentage (%) of equity		Total Trades	Average Gain	Average Loss
	100	50			
AAPL					
Short-term (Daily)	120987.2%	6474.3%	634	11.9%	-3.9%
Intermediate-term (Weekly)	390714.6%	14255.1%	125	31.7%	-7.2%
Long-term (Monthly)	46168.8%	7215.0%	27	141.8%	-16.1%
AMZN					
Short-term (Daily)	51553.6%	3923.3%	421	10.9%	-3.5%
Intermediate-term (Weekly)	58010.7%	5790.1%	84	45.9%	-6.5%
Long-term (Monthly)	70969.1%	8815.8%	18	229.4%	-11.3%
GOOG					
Short-term (Daily)	190.7%	131.8%	196	4.2%	-2.1%
Intermediate-term (Weekly)	1222.9%	588.0%	33	13.4%	-5.5%
Long-term (Monthly)	2849.6%	1149.1%	7	63.3%	-3.7%
META					
Short-term (Daily)	313.9%	136.4%	206	8.3%	-2.9%
Intermediate-term (Weekly)	1899.2%	446.9%	35	25.8%	-4.0%
Long-term (Monthly)	413.4%	172.1%	7	72.1%	-6.5%
MSFT					
Short-term (Daily)	2765.1%	608.2%	618	6.8%	-2.6%
Intermediate-term (Weekly)	6334.6%	1189.0%	128	23.5%	-5.7%
Long-term (Monthly)	46875.7%	9310.3%	23	388.5%	-7.8%
NFLX					
Short-term (Daily)	7997.8%	1295.8%	339	10.9%	-4.1%
Intermediate-term (Weekly)	28749.7%	3148.2%	71	37.3%	-9.2%
Long-term (Monthly)	13843.3%	2104.9%	11	130.9%	-9.6%
NVDA					
Short-term (Daily)	78562.3%	4850.2%	382	13.9%	-4.9%
Intermediate-term (Weekly)	62424.6%	5799.7%	86	47.5%	-9.5%
Long-term (Monthly)	66755.2%	8925.3%	15	195.1%	-18.8%
TSLA					
Short-term (Daily)	4602.4%	1107.9%	223	19.1%	-4.4%
Intermediate-term (Weekly)	5341.8%	1381.9%	48	64.5%	-7.5%
Long-term (Monthly)	1943.5%	1177.2%	15	329.0%	-16.2%
*BACKTESTING PERFORMED ON DATA SINCE IPO AND ENDING 09/08/2025					

*\*Past performance is no guarantee of future results. The trading systems' signals are derived from data believed to be accurate, but such accuracy or completeness cannot be guaranteed. It should not be assumed that such signals, past or future, will be profitable, equal past performance, or ensure future performance or trends, primarily since a human writes these emails and may contain errors and omissions. LAST GENERATED 09/09/2025.*

## REFERAL PROGRAM

*For every person you refer who signs up for our top-tier newsletter and pays the trial fee of \$49.99, you earn a 50% discount on your next monthly payment, worth up to \$49.99. Invite family, friends, colleagues, neighbors, or anyone interested in the financial markets and eager to stay ahead. If you refer two people each month, your discount covers 100% of your next payment. And if you refer more than two, you can start earning money!*

*After signing up, all referrals must send us an email that includes your name and email address so that we can verify this information against our records.*

*Spread the word!*

**THIS COPYRIGHTED MATERIAL IS INTENDED SOLELY FOR USE BY DESIGNATED RECIPIENTS. NO REPRODUCTION, RETRANSMISSION, OR OTHER USE OF THE INFORMATION OR IMAGES IS AUTHORIZED. LEGITIMATE NEWS MEDIA MAY QUOTE REPRESENTATIVE PASSAGES TO REPORT ON MY OPINIONS IN CONTEXT AND WITH FULL ATTRIBUTION. THE ANALYSIS IS DERIVED FROM DATA BELIEVED TO BE ACCURATE, BUT THE ACCURACY OR COMPLETENESS OF THAT DATA CANNOT BE GUARANTEED. IT SHOULD NOT BE ASSUMED THAT OUR ANALYSIS, PAST OR FUTURE, WILL BE PROFITABLE, EQUAL PAST PERFORMANCE, OR GUARANTEE FUTURE PERFORMANCE OR TRENDS. ALL TRADING AND INVESTMENT DECISIONS ARE THE SOLE RESPONSIBILITY OF THE READER. INCLUDING INFORMATION ABOUT MANAGED ACCOUNTS, PROGRAM POSITIONS, AND OTHER INFORMATION IS NOT INTENDED TO BE A RECOMMENDATION OR SOLICITATION. FOR MORE INFORMATION, CONTACT INTELLIGENT INVESTING, LCC AT [INFO@INTELLIGENTINVESTING.MARKET](mailto:INFO@INTELLIGENTINVESTING.MARKET). WE RESERVE THE RIGHT TO REFUSE SERVICE TO ANYONE FOR ANY REASON.**