

# INTELLIGENT INVESTING

## DAILY NEWSLETTER

STOCK MARKETS, CRYPTOS, GOLD & MINERS  
ETF, CRYPTO & MAGNIFICENT 7+ TRADE ALERTS



BY DR. ARNOUT TER SCHURE, 06/04/2025

# TABLE OF CONTENTS

STOCKMARKETS	II
SP500	II
NASDAQ & NASDAQ 100	III
DOW JONES INDUSTRIAL AVERAGE	IV
SEMI CONDUCTORS	V
SMALL CAPS	VI
MARKET BREADTH: PMOBUYALL INDICATOR	VII
 CRYPTO CURRENCIES	 VIII
BITCOIN	VIII
RIOT	IX
RIOT	X
 GOLD & MINERS	 XI
GOLD	XI
GDX & GDXJ	XII
 ETF TRADE ALERTS	 XIII
MAGNIFICENT 7+ TRADE ALERTS	XIV
CRYPTO TRADE ALERTS	XV
 BACKTESTED TRADING SYSTEM PERFORMANCES	 XVI

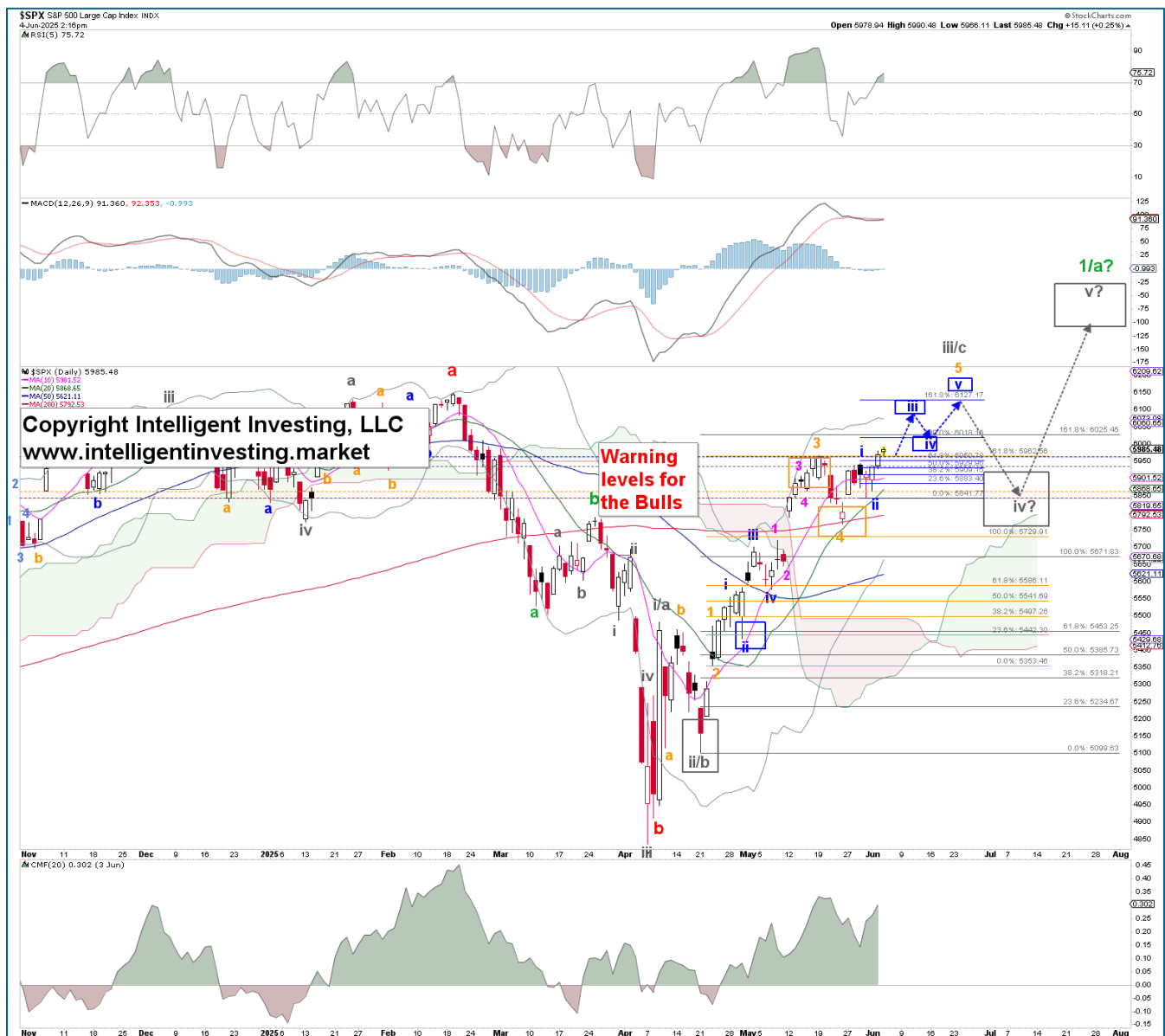
# STOCKMARKETS

Our preferred view remains that the impulse continues, until proven otherwise, which is a break below key warning levels, with a smaller fifth wave now underway, depending on the degree of the index.

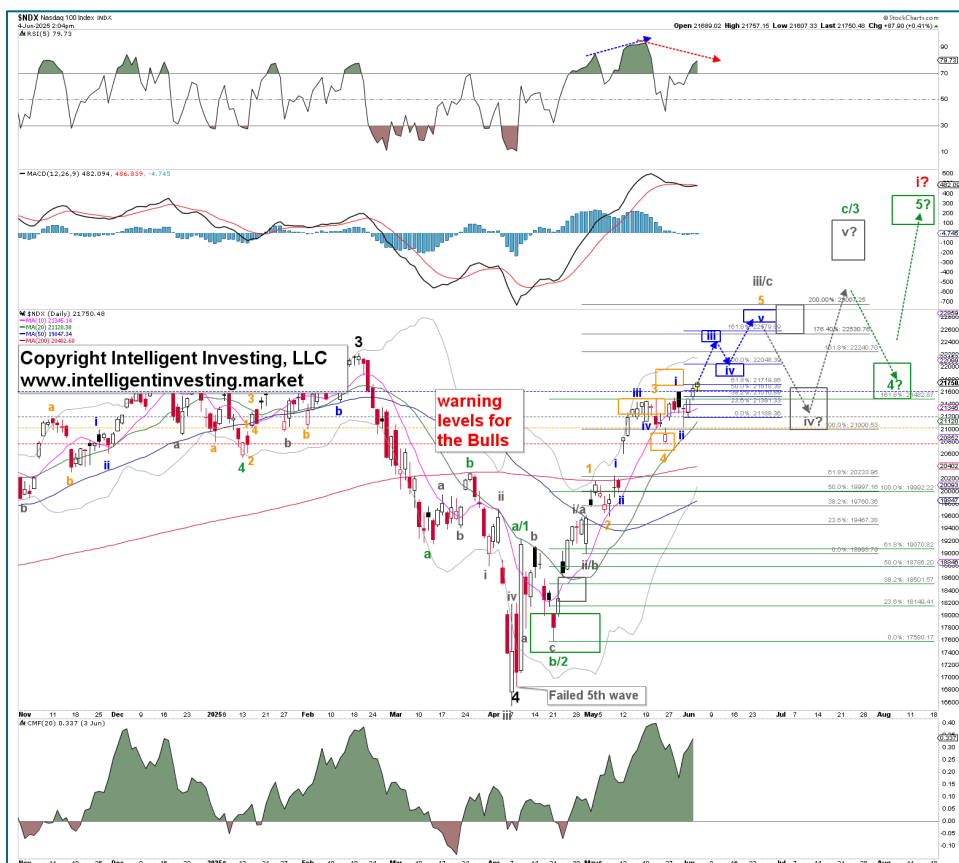
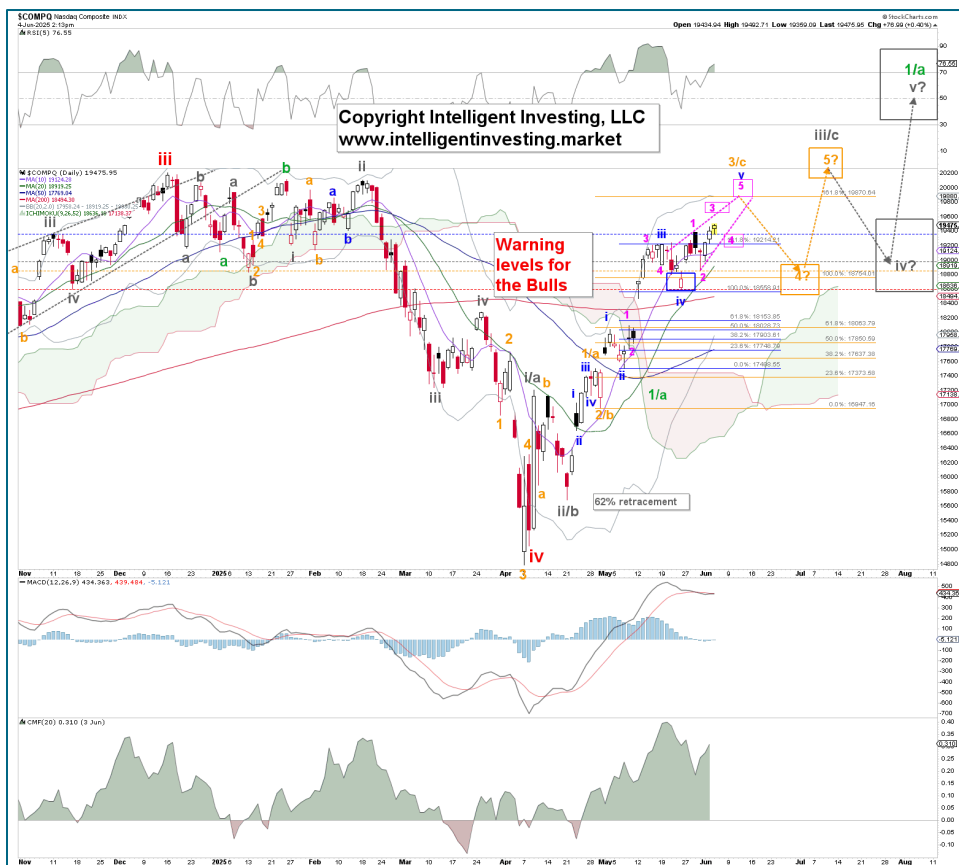
## S&P500

Higher prices persist, which aligns with our recent bullish perspective. Although there may not be anything new to discuss beyond the raised warning levels, we wanted to highlight the potential for an ending diagonal (orange) W-v. Refer to the NASDAQ chart on the following page. At this stage, it remains a possibility, but we need to monitor it closely, as it would indicate the advance will be slightly more overlapping, ending between \$6125 and \$6150. Aside from that, the price action from the May 23 low still works well for the (blue) W-i, ii, iii setup, contingent upon staying above the warning levels: blue (1st warning level for the bulls) at \$5966, grey (2nd warning level) at \$5938, orange (3rd warning level) at \$5861, and red (final warning level) at \$5843.

Blue W-iii can target \$6,125+/-25, Blue W-iv \$6,000+/-25, and W-v of the then-extended orange W-5 can ideally reach \$6,150-6,200. From there, the market can decide whether to tag on the grey W-iv, v (preferred) or not. For now, the grey W-iii/c, with a subdividing orange W-5, is still underway.



# NASDAQ & NASDAQ100



We want to draw your attention to the possibility that the current smaller-degree 5<sup>th</sup> wave could morph into an ending diagonal (ED) instead of a standard impulse. It would allow for the NASDAQ to reach the orange 161.80% extension to the T. So, while we always start with standard Fib-based impulse patterns, we must also be cognizant of the fact that 5<sup>th</sup> waves can be EDs. The pink W-3 will then target \$19775+/-25, the W-4 will target \$19225+/-25, and the W-5 of the blue W-v of the orange W-3/c will target \$19875+/-25.

Meanwhile, we keep the standard Fib-based impulse pattern as our preferred path forward, as shown for the NASDAQ100 on the left. It means, the index is still in the (blue) W-iii, contingent upon staying above the warning levels: blue (1st warning level for the bulls) at \$21607, grey (2nd warning level) at \$21199, orange (3rd warning level) at \$21032, and red (final warning level) at \$20778. Blue W-iii can still target \$22530+/-50, Blue W-iv \$22,000+/-50, and W-v of the then-extended orange W-5 can ideally reach \$22,800+/-100. From there, the market can decide whether to tag on the grey W-iv, v (preferred) or not. For now, the grey W-iii/c, with a subdividing orange W-5, is underway.

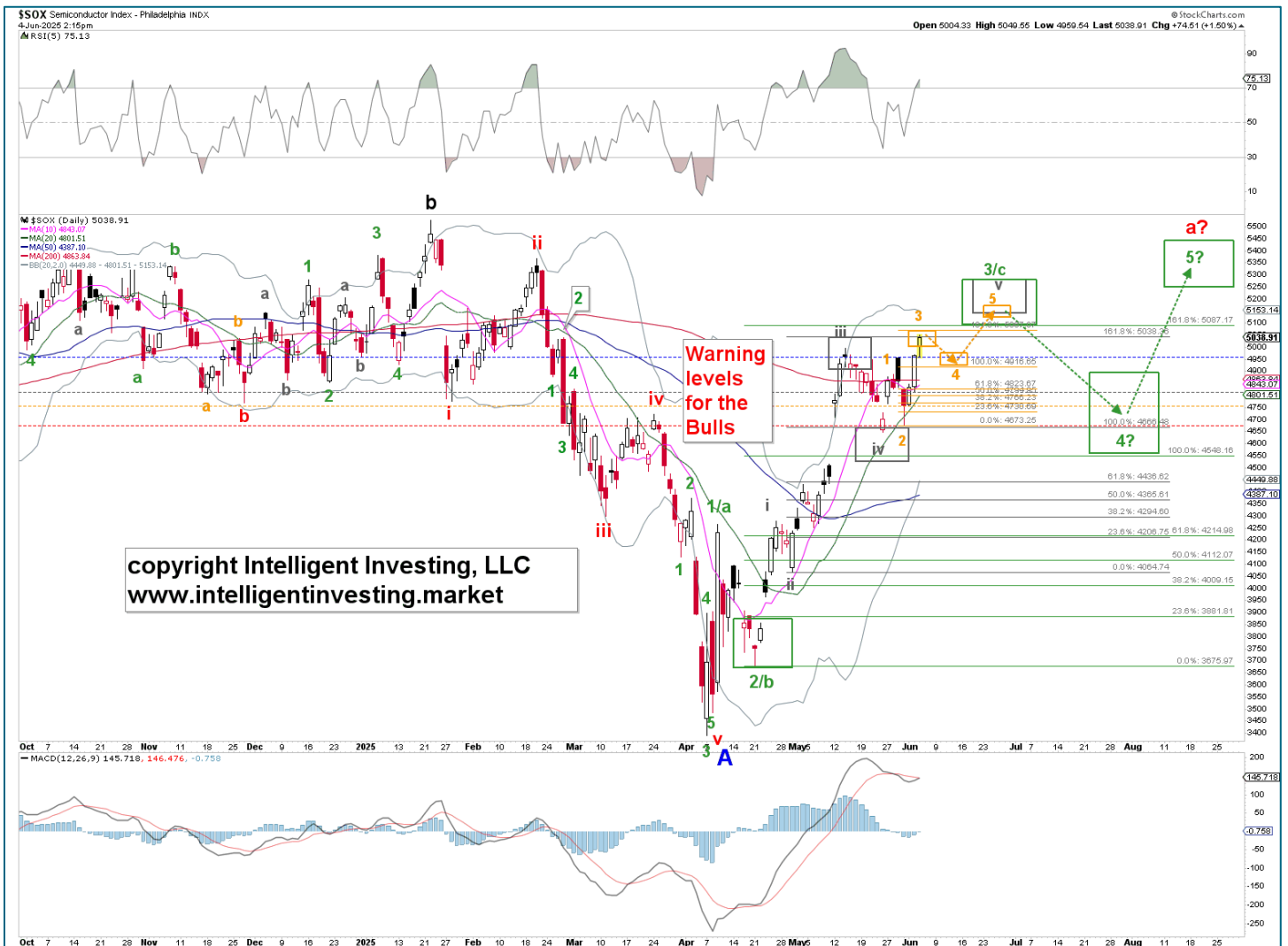
# DOW JONES INDUSTRIAL AVERAGE

The INDU is not as far along as the SPX and NAS/NDX, and is one of the other indexes that could lead to the development of an ending diagonal 5th wave. For now, our preferred EW count for the DOW remains the same as for the SP500, with the same warning levels as yesterday: *“blue (1st warning level for the bulls) at \$42305, grey (2nd warning level) at \$41828, orange (3rd warning level) at \$41354, and red (final warning level) at \$40376. Blue W-iii can then target \$43475+/-225, Blue W-iv \$42750+/-250, and W-v of the orange W-5 can ideally reach \$43750-4400, which is right in the ideal orange and grey target zones.”*



## SEMI CONDUCTORS

So far, so good. The higher prices persist, as we had already anticipated a few days ago. Thus, our preferred EW count for the SOX remains the same, with some raised warning levels: blue (1st warning level for the bulls) at \$4959, grey (2nd warning level) at \$4815, orange (3rd warning level) at \$4759, and red (final warning level) at \$4673. The Orange W-3 target zone of \$5040+/-20 has been reached, bingo (!), but no signs of the Orange W-4 to ideally \$4900+/-20 yet. That will require a down day, ideally to around today's low. Then, the W-5 of the green W-3/c can ideally reach \$ 5,150 +/- \$25, which is right in the ideal grey and green target zones. From there, the market can decide whether to tag on the green W-4, 5 (preferred) or not. For now, the grey W-v of the green W-3/c is underway and subdividing as expected





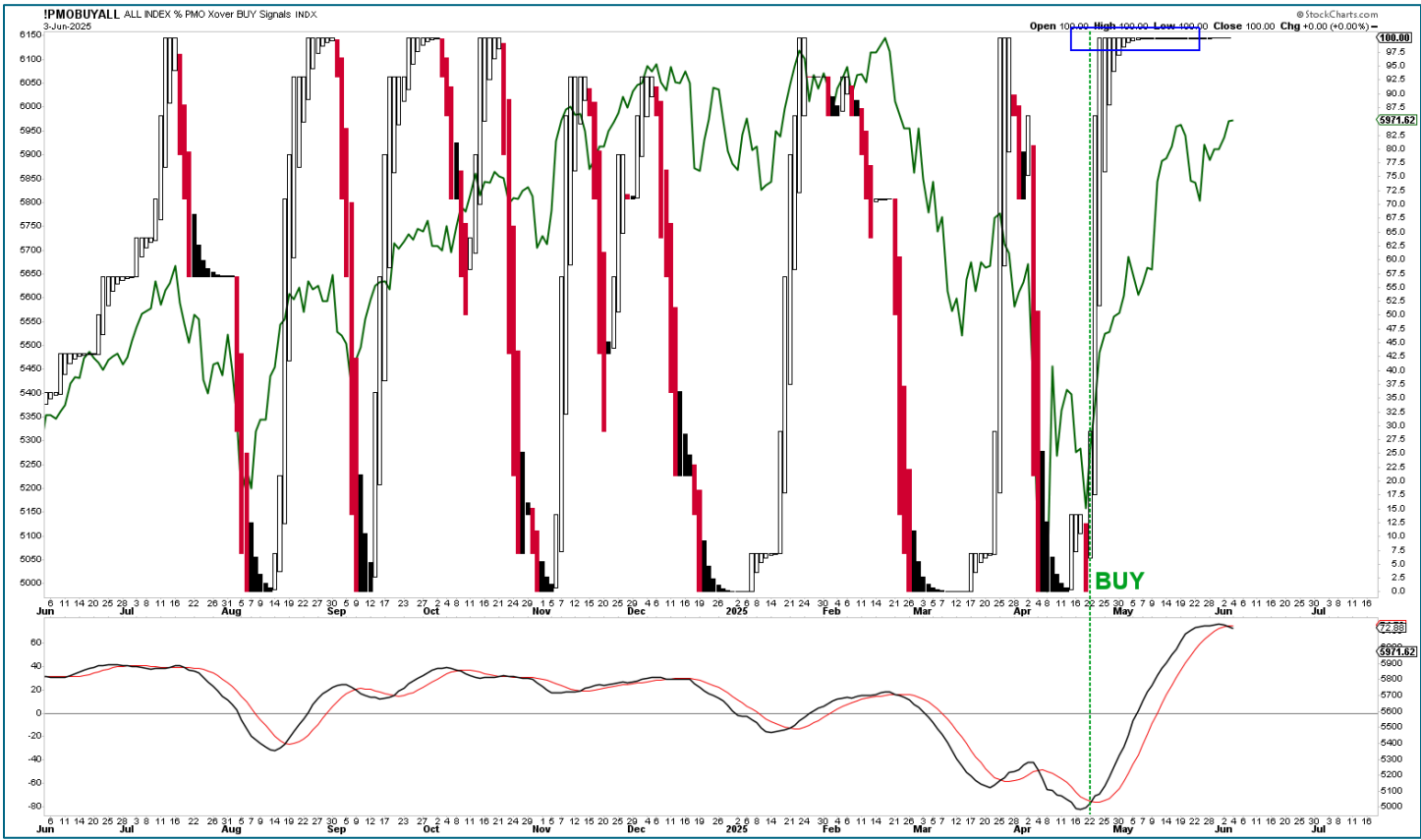
## SMALL CAPS

Like the Dow Jones, this index is not as advanced as the SPX, SOX, and NASDAQ/NASDAQ Composite, indicating that there are no new uptrend highs. Thus, like the INDU, and as noted for the NAS, it may be forming an ending diagonal with a target of \$216.50 at best. Accordingly, we have adjusted our warning levels: blue (1st warning level for the bulls) at \$208.14, grey (2nd warning level) at \$205.55, orange (3rd warning level) at \$202.67, and red (final warning level) at \$199.65. The standard impulse pattern targets remain the same. Grey W-iii can then target \$215.5+/-1, the Grey W-iv \$210+/-1, and the W-v of the green W-5 can ideally reach \$218+/-2, which is within the ideal green target zone. For an ED, we should look for \$212.5+/-0.5, \$208.5+/-0.5, and \$216.5+/-0.5, respectively. Now we can let the market decide which path to take, and there will be zero surprises for us 😊



# MARKET BREADTH: PMOBUYALL INDICATOR

The PMO-Buy All indicator remains at the top of its range (100), telling us to stay long as the trend remains higher. That simple.





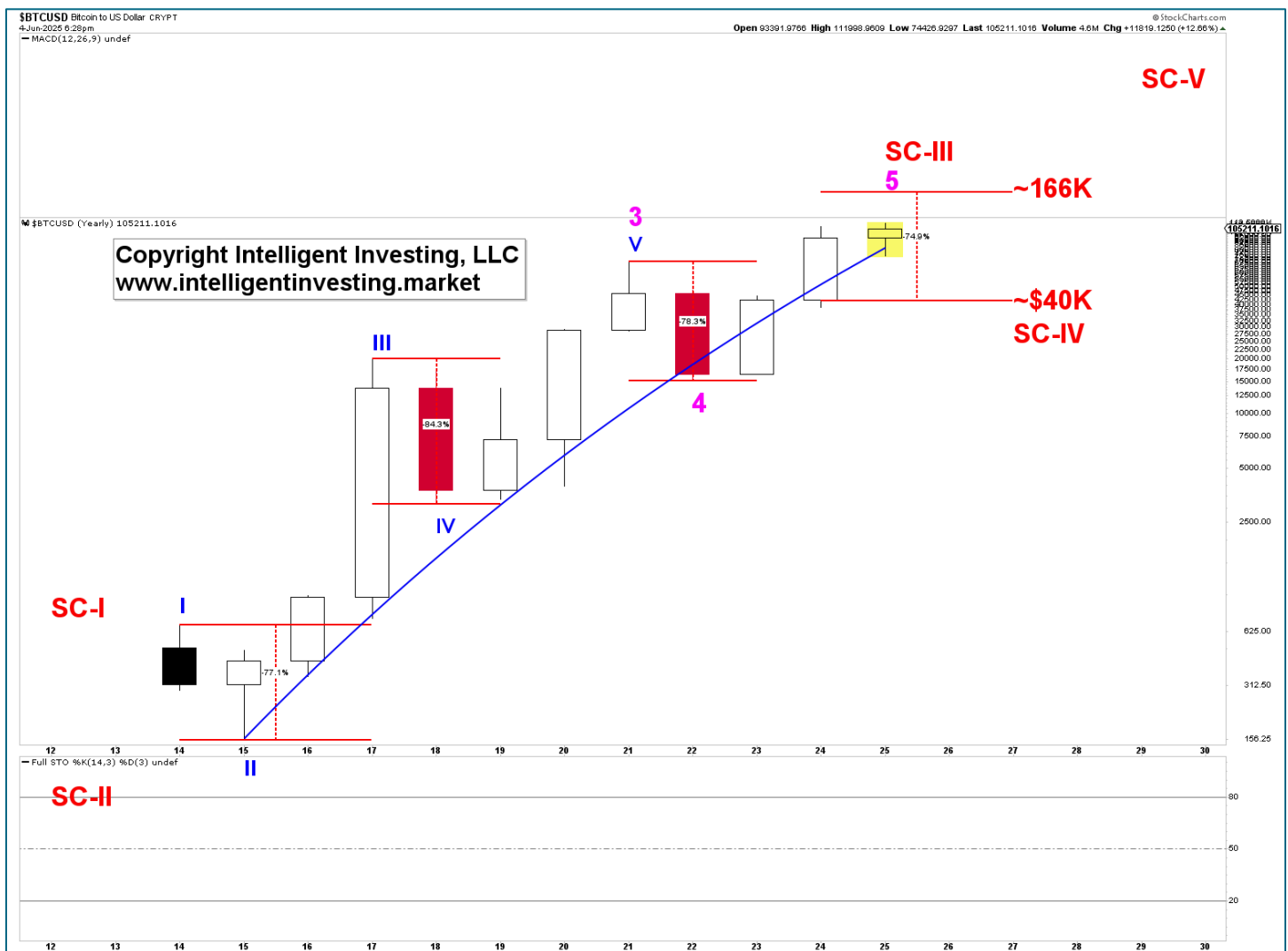
# CRYPTO CURRENCIES

## BITCOIN

Short-term prices have remained stagnant, so let's include a comprehensive chart using yearly candles and a detailed report from FIDELITY about Bitcoin:

<https://drive.google.com/file/d/1JJbNhlZtQ9eQqN5Wy0oSxmlzhmZPhUt0/view?usp=sharing>

The price action from 2011 to 2012 represented, in this case, Super Cycle I and II (we can also refer to it as **hjkdhhsakjdhjks-1** and 2, to emphasize that wave-degree nomenclature is not crucial). What matters is that we see BTC as concluding a larger 5th wave to finish the Super Cycle III wave. As previously speculated, a peak of approximately ~\$166K could be the target for this current Bull Cycle. A typical 75-85% Bear market decline in 2026 could then push the price of Bitcoin back to the 2024 lows, which align with the 2023 highs of around \$35-45K. Then SC-V can commence and rally BTC's price possibly to \$ 750K-\$1M. Sounds outlandish? Not given the logarithmic growth of BTC: blue trendline. For now, the focus is on wrapping up the SC-III.



# RIOT

Another strong follow-through day for the crypto mining company, adding further evidence to the green W-1, 2 completion. As such, we will devote two pages to this ticker as we can now also provide more detail for the bigger picture. Yesterday we already applied the Bullish warning levels, which we can raise today. That's Bullish 😊. Blue at \$9.03, gray at \$8.49, orange at \$7.93, and red at \$6.96.

*Remember, these warning levels help us evaluate the likelihood that the EW count shown, in this case bullish, will persist. Blue indicates high odds, while red signifies that the wave count is invalid. Thus, blue = radar lock. Grey = proverbial shot across the bow. Orange = first hit, taking in water. Red = second hit, sinking to the bottom.*

Meanwhile, assuming our EWP count is correct as well as a standard Fib-based impulse pattern, we can now look for the green W-3 to ideally \$13+/-1, W-4 to \$11+/-1 and W-4 of the larger red W-I to ideally \$14.50+/-1. The latter fits nicely with the bigger picture as shown on the next page.

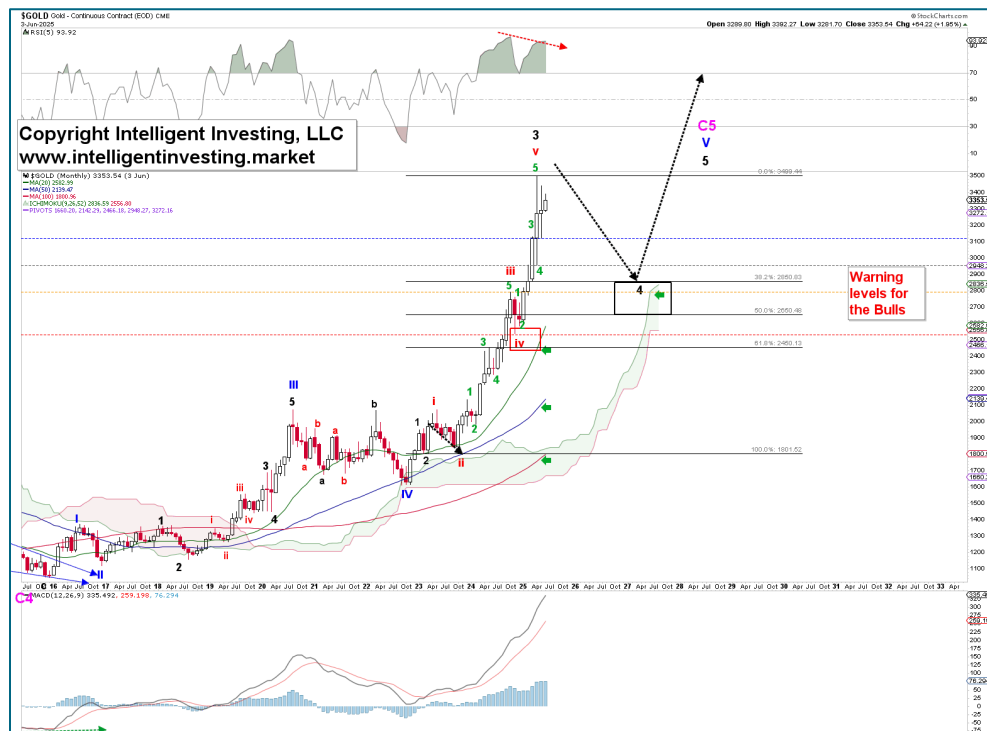


Here, we present the weekly chart, featuring the green W-1 through 5 sequences as shown in the daily chart, which completes the red W-i at around  $\$14.5 \pm 1$ . Then we should see a red W-ii pullback to ideally around the support level of  $\$10-11$ . From there, the red W-iii can then target the red 161.80% extension, which is close to the black, one degree higher, W-3/c lower target zone's Fib-extension.



# GOLD AND MINERS

## GOLD



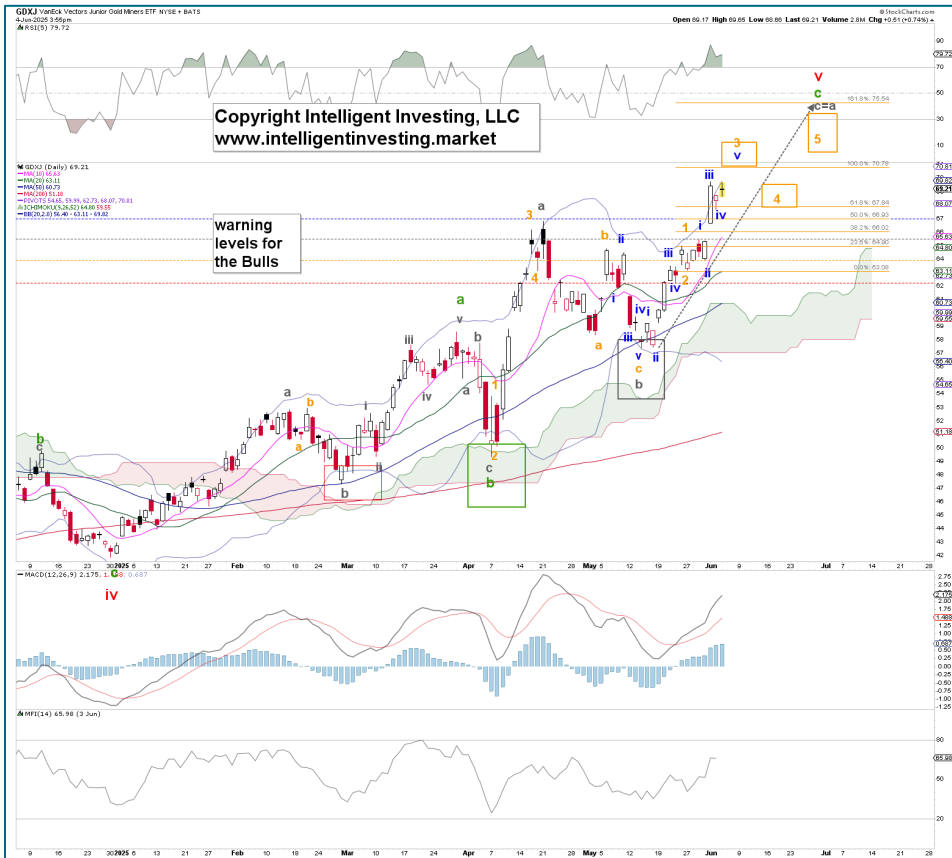
Our preferred view for GOLD and GLD is that they are getting close to a significant 4<sup>th</sup> wave, but the 3<sup>rd</sup> wave top has not been confirmed yet. See the GOLD monthly chart on the left.

Zooming in per the GLD chart, we can still allow for the green W-5 of the red W-v to complete. Note the GLD chart has a one-degree higher wave label annotation, but it also projects a larger (blue) third wave top (W-III). The warning levels for the Bulls remain the same as yesterday:

Blue at \$308.74, gray at \$304.46, orange at \$301.25, and red at \$291.78. Thus, contingent on staying at least above the grey warning level, we can still allow for higher prices. Below the orange level significantly increases the odds the larger 4<sup>th</sup> wave is already underway.



# GDX and GDXJ



We continue to expect GDXJ to reach \$76+/-1 for the orange W-5, which is where the grey W-c = W-a, contingent on holding above the warning levels: \$67, \$65.5, \$64 and \$63.5. However, we may be forming an ending diagonal, which will mean the 3<sup>rd</sup>, 4<sup>th</sup> and 5<sup>th</sup> wave will not travel the full distance as in a standard impulse, so we have lowered the target zones.

Using GDX for our bigger picture, we also expect it to reach the ideal upside target of roughly \$60-65, contingent on holding above it was warning levels: \$51.65, \$49.34, \$40.65, \$45.10.

Thus, despite today's pullback, which is most likely a smaller (blue) W-iv, as seen in the GDXJ daily chart, we see no reason to change our bullish tune.



## ETF TRADE ALERTS\*

- Short-term System (EoD): Hold time is days to weeks. The trading signal is updated at the EoD.
- Intermediate-term System (EoW): Hold time is weeks to months. The trading signal is updated at the EoW.
- Long-term System (EoM): Hold time is months to years. The trading signal is updated at the EoM.

Green = BUY or SELL, Purple = Open Position (HOLD), Yellow = prior action (BUY or SELL), White = Stay in cash

### DOW JONES\* (DIA, other ETFs are DDM, UDOW)

- Short-term HOLD the long position bought 05/27 (signal given at \$42349.11). UP 0.3%.
- Intermediate-term On 05/30: HOLD the long position bought 05/09 (signal given at \$41249). UP 2.5%.
- Long-term On 05/30: Stay in cash and wait for a new signal.

### NDX\* (QQQ, other ETFs are QLD, TQQQ)

- Short-term HOLD the position bought 05/27 (signal given at \$21414.99). UP 1.5%.
- Intermediate-term On 05/30: HOLD the position bought 05/02 (signal given at \$20102.61). UP 6.2%.
- Long-term On 05/30: BUY a long position (signal given at \$21340.9).

### S&P500\* (SPY, other ETFs are SSO, SPXL)

- Short-term HOLD the position bought 05/27 (signal given at \$5921.55). UP 0.8%.
- Intermediate-term On 05/30: HOLD the position bought 05/02 (signal given at \$5686.67). UP 4.0%.
- Long-term On 05/30: BUY a long position (signal given at \$5911.69)

### SEMI-CONDUCTORS\* (SOXX, other ETFs are USD, SOXL).

- Short-term HOLD the long position bought 06/02 (signal given at \$4829.16). UP 4.2%.
- Intermediate-term On 05/30: HOLD the long position bought 05/09 (signal given at \$4466.50). UP 6.5%
- Long-term On 05/30: Stay in cash and wait for a new signal.

### S&P600 Small Cap\* (IWM, other ETFs are UWM, TNA).

- Short-term HOLD the long position bought 06/03 (signal given at \$1299.91). DOWN 0.1%.
- Intermediate-term On 05/30: HOLD the long position bought 05/16 (signal given at \$1322.39) DOWN 2.9%.
- Long-term On 05/30: Stay in cash and wait for a new signal.

### Ethereum\* (ETHE/SETH)

- Short-term HOLD the ETHE position bought 06/03 (signal given at \$21.80). UP 0.5%
- Intermediate-term On 05/30: HOLD the ETHE position bought 05/09 (signal given at \$19.39). UP 9.9%.
- Long-term On 05/30: Stay in cash and wait for a new signal.

### Bitcoin\* (IBIT/BITI)

- Short-term Stay in cash and wait for a new signal.
- Intermediate-term On 05/31 HOLD the IBIT position bought 04/25 (signal given at \$54.27). UP 9.5%
- Long-term On 05/30: BUY IBIT (signal given at \$59.46).

## MAGNIFICENT 7+ TRADE ALERTS\*

- Short-term System (EoD): Hold time is days to weeks. The trading signal is updated at EoD.
- Intermediate-term System (EoW): Hold time is weeks to months. The trading signal is updated at EoW.
- Long-term System (EoM): Hold time is months to years. The trading signal is updated at EoM.

Green = BUY or SELL, Purple = Open Position (HOLD), Yellow = prior action (BUY or SELL), White = Stay in cash

### AAPL\*

- Short-term HOLD the long position bought 06/03 (signal given at \$203.38). DOWN 0.1%.
- Intermediate-term On 05/30: Stay in cash and wait for a new buy signal.
- Long-term On 05/30: Stay in cash and wait for a new buy signal.

### AMZN\*

- Short-term HOLD the position bought 05/27 (signal given at \$205.78). UP 0.8%
- Intermediate-term On 05/30: HOLD the long position bought 05/16 (signal given at \$205.59). DOWN 0.3%.
- Long-term On 05/30: BUY a position (signal given at \$205.01)

### GOOG\*

- Short-term Stay in cash and wait for a new buy signal.
- Intermediate-term On 05/30: HOLD the long position bought 05/16 (signal given at \$167.43). UP 3.2%.
- Long-term On 5/30: Stay in cash and wait for a new buy signal.

### META\*

- Short-term HOLD the position bought 05/27 (signal given at \$641.62). UP 7.2%.
- Intermediate-term On 05/30: HOLD the position bought 05/02 (signal given at \$597.02). UP 8.5%.
- Long-term On 05/30: BUY a position (signal given at \$647.59).

### MSFT\*

- Short-term HOLD the position bought 04/24 (signal given at \$386.59). UP 20.2% (!)
- Intermediate-term On 05/30: HOLD the position bought 05/02 (signal given at \$434.48). UP 6.0%.
- Long-term On 05/30: BUY a position (signal given at \$460.36)

### NFLX\*

Short-term HOLD the position bought 05/13 (signal given at \$1138.44). UP 9.0%.  
Intermediate-term On 05/30: HOLD the position bought 04/25 (signal given at \$1101.53). UP 9.6%  
Long-term On 04/30: HOLD the remaining 1/4 of the full position bought 12/30/'22 (!) and MOVE the stop to \$564.11.  
Winning trade. (old trading system's signals)

### NVDA\*

Short-term HOLD the position bought 04/24 (signal given at \$106.43). UP 33.4% (!)  
Intermediate-term On 05/30: HOLD the position bought 05/02 (signal given at \$114.50). UP 18.0%  
Long-term On 05/30: BUY a position (signal given at \$135.13).

### TSLA\*

Short-term SELL the position bought 04/24 (signal given at \$259.51). UP 28.4% (!)  
Intermediate-term On 05/30: HOLD the position bought 05/02 (signal given at \$287.21). UP 20.6%  
Long-term On 05/30: BUY a position (signal given at \$346.46)



# CRYPTOS TRADE ALERTS \*

- Short-term System (EoD): Hold time is days to weeks. The trading signal is updated at EoD.
- Intermediate-term System (EoW): Hold time is weeks to months. The trading signal is updated at EoW.
- Long-term System (EoM): Hold time is months to years. The trading signal is updated at EoM.

Green = BUY or SELL, Purple = Open Position (HOLD), Yellow = prior action (BUY or SELL), White = Stay in cash

## BinanceCoin (BNB)\*

- Short-term System Stay in cash and wait for a new buy signal.
- Intermediate-term system On 06/01: HOLD the position bought 05/09 (signal given at \$650.98). UP 1.1%.
- Long-term System On 05/31: Stay in cash and wait for a new buy signal.

## Bitcoin (BTC)\*

Short-term System Stay in cash and wait for a new buy signal.

- Intermediate-term System On 06/01: HOLD the position bought 04/27 (signal given at \$93777.44). UP +12.4%
- Long-term System On 05/31: HOLD the remaining 1/4 of the full position bought 03/31/'23 (!) and MOVE the stop to \$61179.58. Winning trade (per the old trading system).

## ChainLink (LINK)\*

- Short-term System Stay in cash and wait for a new buy signal.
- Intermediate-term system On 06/01: SELL the position bought 05/11 (signal given at \$17.10). DOWN 17.6%.
- Long-term System On 05/31: Stay in cash and wait for a new buy signal.

## Ethereum (ETH)\*

- Short-term System HOLD the position bought 06/03 (signal given at \$2622.80). UP 0.0%
- Intermediate-term system On 06/01: HOLD the position bought 05/11 (signal given at \$2514.75). UP 0.9%
- Long-term System On 05/31: Stay in cash and wait for a new buy signal.

## Solana (SOL)\*

- Short-term System Stay in cash and wait for a new buy signal.
- Intermediate-term System On 06/01: HOLD the position bought 05/04 (signal given at \$143.99). UP 9.1%
- Long-term System On 05/31: Stay in cash and wait for a new buy signal.

## TRON (TRX)\*

- Short-term System BUY a position (signal given at \$0.2733).
- Intermediate-term System On 06/01: HOLD the position bought 04/13 (signal given at \$0.255). UP 5.9%
- Long-term System On 05/31: HOLD the remaining 1/4 of the full position bought 03/31/'23 (!) and MOVE the stop to \$0.112. Winning trade(per the old trading system).

## \*BACKTESTED TRADING SYSTEM PERFORMANCES

Our new trading systems work best by applying the principle of compounding, which involves reinvesting some or all of your profits in the next trade. The more you compound, the better the returns will be. Please review the table below.

Please do not trade positions bought without the system's signals using the system's trading signals. Additionally, please refrain from entering a position when the trade is already in progress; wait for a new trading signal.

LONG-ONLY TRADING SYSTEM RETURNS FOR THE INDEXES*						
Time frame	Percentage (%) of equity			Total Trades	Average Gain	Average Loss
	100	50	25			
S&P500 (SPX)**						
Short-term (Daily)	3217.5%	530.3%	155.9%	964	2.9%	-1.2%
Intermediate-term (Weekly)	3272.3%	566.3%	166.4%	204	8.4%	-2.3%
Long-term (Monthly)	4782.6%	747.4%	207.2%	32	24.6%	-6.1%
NASDAQ100 (NDX)**						
Short-term (Daily)	1243.3%	305.1%	115.6%	623	4.7%	-1.9%
Intermediate-term (Weekly)	5128.5%	683.8%	212.1%	111	12.0%	-4.4%
Long-term (Monthly)	7511.4%	1422.7%	456.0%	20	83.0%	-8.1%
DOW JONES INDUSTRIAL AVERAGE (INDU)***						
Short-term (Daily)	2153757.8%	19451.0%	1411.0%	1804	3.5%	-1.3%
Intermediate-term (Weekly)	202979.1%	6350.4%	789.0%	376	9.7%	-2.5%
Long-term (Monthly)	82893.5%	4340.8%	660.3%	79	26.7%	-5.8%
*Since inception (March 1957)      **Since inception (January 1985)      ***Since inception (May 1896)						
*BACKTESTING PERFORMED ON DATA SINCE INCEPTION AND ENDING 03/24/2025						

LONG-ONLY TRADING SYSTEM RETURNS FOR BITCOIN AND ETHEREUM UNTIL 03/30/2025				
Time frame (Resolution)	Percentage (%) of equity			Total Trades
	100	50	25	
Bitcoin (BTC)*				
Short-term (Daily)	1023332%	40489%	3524%	272
Intermediate-term (Weekly)	3508730%	112493%	7821%	33
Long-term (Monthly)	508225%	110685%	23956%	5
Ethereum (ETH)**				
Short-term (Daily)	145212%	13920%	1912%	205
Intermediate-term (Weekly)	274728%	36114%	5377%	30
Long-term (Monthly)	10507%	7693%	3340%	9
*Since data available (August 2011) via BITSTAMP		**Since data available (August 2015)		

LONG-ONLY TRADING SYSTEM RETURNS THE MAG 7+ STOCKS*						
Time frame	Percentage (%) of equity			Total Trades	Average Gain	Average Loss
	100	50	25			
AAPL						
Short-term (Daily)	118822.7%	6407.2%	861.6%	627	12.0%	-3.9%
Intermediate-term (Weekly)	412282.2%	14639.8%	1512.7%	123	31.7%	-7.3%
Long-term (Monthly)	41758.8%	6848.5%	1309.6%	25	153.8%	-16.1%
AMZN						
Short-term (Daily)	48422.1%	3795.6%	642.7%	415	10.9%	-3.5%
Intermediate-term (Weekly)	58009.2%	5789.2%	1027.3%	83	45.9%	-6.5%
Long-term (Monthly)	46366.2%	6948.4%	1478.8%	16	251.5%	-11.3%
GOOG						
Short-term (Daily)	164.4%	66.4%	44.6%	190	4.2%	-2.1%
Intermediate-term (Weekly)	1221.1%	582.4%	283.6%	32	13.4%	-5.5%
Long-term (Monthly)	2836.9%	1145.2%	503.2%	6	63.3%	-3.7%
META						
Short-term (Daily)	241.4%	113.7%	52.4%	200	8.3%	-2.9%
Intermediate-term (Weekly)	1889.1%	441.0%	146.4%	34	25.8%	-4.0%
Long-term (Monthly)	411.9%	171.4%	76.8%	6	72.1%	-6.5%
MSFT						
Short-term (Daily)	2061.9%	507.1%	163.9%	616	6.7%	-2.6%
Intermediate-term (Weekly)	5556.8%	1104.3%	303.1%	127	23.7%	-5.7%
Long-term (Monthly)	46873.3%	9309.7%	2050.4%	22	388.5%	-7.8%
NFLX						
Short-term (Daily)	6118.4%	1115.8%	291.3%	333	11.0%	-4.1%
Intermediate-term (Weekly)	24277.7%	2866.2%	569.7%	68	37.8%	-9.4%
Long-term (Monthly)	13839.4%	2102.5%	504.2%	10	130.9%	-9.6%
NVDA						
Short-term (Daily)	49642.0%	3715.0%	618.1%	380	13.6%	-4.9%
Intermediate-term (Weekly)	62423.8%	5799.7%	927.5%	85	47.5%	-9.5%
Long-term (Monthly)	66754.2%	8924.9%	1615.8%	14	195.1%	-18.8%
TSLA						
Short-term (Daily)	4094.1%	1026.6%	298.6%	215	19.1%	-4.5%
Intermediate-term (Weekly)	5062.7%	1342.1%	408.5%	46	68.2%	-7.5%
Long-term (Monthly)	1943.1%	1176.6%	540.4%	14	329.0%	-16.2%
*BACKTESTING PERFORMED ON DATA SINCE IPO AND ENDING 04/30/2025						

Past performance is no guarantee of future results. The trading systems' signals are derived from data believed to be accurate, but such accuracy or completeness cannot be guaranteed. It should not be assumed that such signals, past or future, will be profitable, equal past performance, or ensure future performance or trends, primarily since a human writes these emails and may contain errors and omissions.

THIS COPYRIGHTED MATERIAL IS INTENDED SOLELY FOR USE BY DESIGNATED RECIPIENTS. NO REPRODUCTION, RETRANSMISSION, OR OTHER USE OF THE INFORMATION OR IMAGES IS AUTHORIZED. LEGITIMATE NEWS MEDIA MAY QUOTE REPRESENTATIVE PASSAGES TO REPORT ON MY OPINIONS IN CONTEXT AND WITH FULL ATTRIBUTION. THE ANALYSIS IS DERIVED FROM DATA BELIEVED TO BE ACCURATE, BUT SUCH ACCURACY OR COMPLETENESS CANNOT BE GUARANTEED. IT SHOULD NOT BE ASSUMED THAT SUCH ANALYSIS, PAST OR FUTURE, WILL BE PROFITABLE, EQUAL PAST PERFORMANCE, OR GUARANTEE FUTURE PERFORMANCE OR TRENDS. ALL TRADING AND INVESTMENT DECISIONS ARE THE SOLE RESPONSIBILITY OF THE READER. INCLUDING INFORMATION ABOUT MANAGED ACCOUNTS, PROGRAM POSITIONS, AND OTHER INFORMATION IS NOT INTENDED TO BE A RECOMMENDATION OR SOLICITATION. FOR MORE INFORMATION, CONTACT INTELLIGENT INVESTING, LCC, AT [INFO@INTELLIGENTINVESTING.MARKET](mailto:INFO@INTELLIGENTINVESTING.MARKET). I RESERVE THE RIGHT TO REFUSE SERVICE TO ANYONE FOR ANY REASON.