

INTELLIGENT INVESTING

DAILY NEWSLETTER

STOCK MARKETS, CRYPTOS, GOLD & MINERS
ETF, CRYPTO & MAGNIFICENT 7+ TRADE ALERTS



BY DR. ARNOUT TER SCHURE, 06/03/2025

TABLE OF CONTENTS

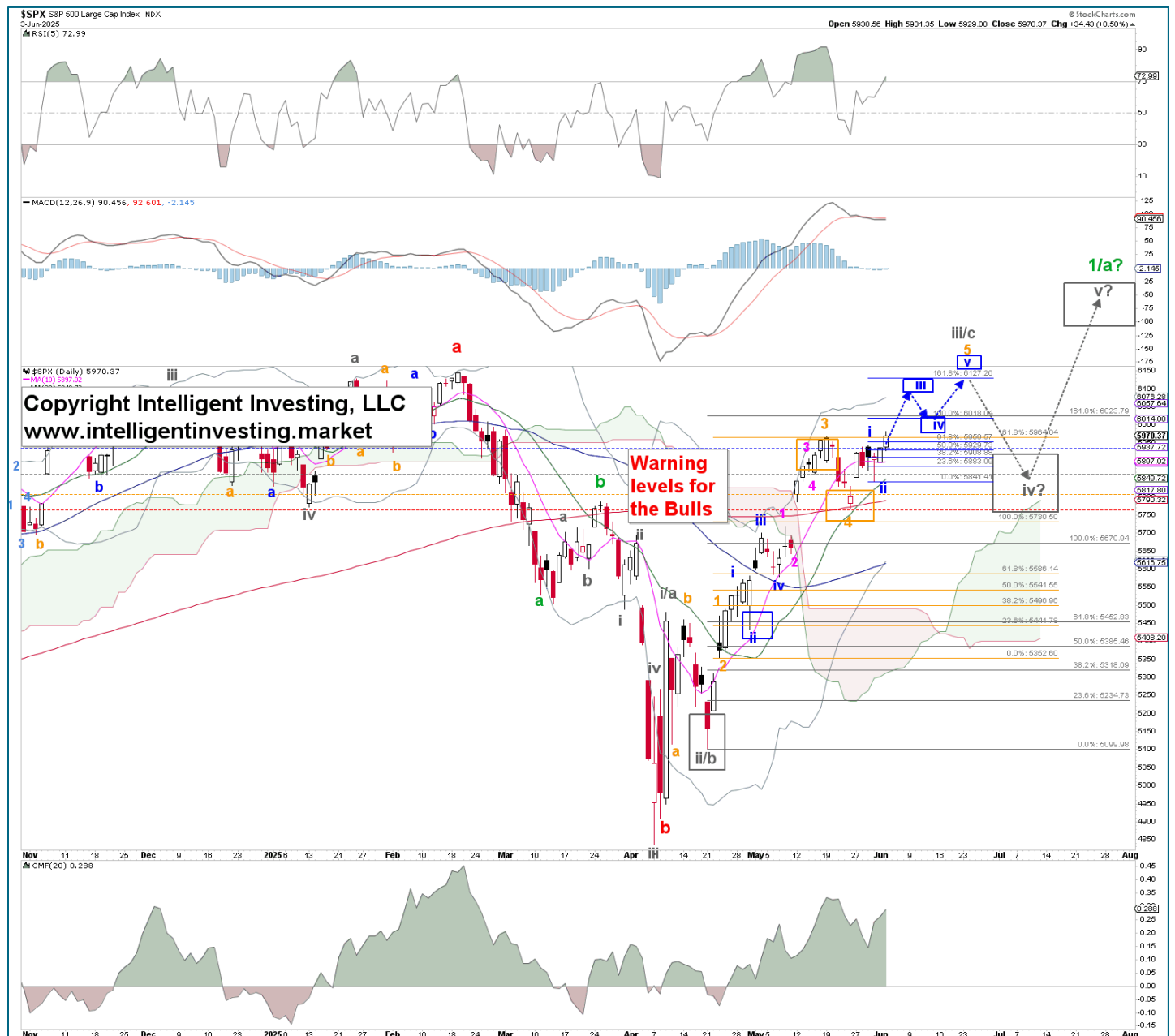
STOCKMARKETS	II
SP500	II
NASDAQ/NASDAQ100	III
DOW JONES INDUSTRIAL AVERAGE	IV
SEMI CONDUCTORS	V
SMALL CAPS	VI
MARKET BREADTH: A/D LINES	VII
 CRYPTO CURRENCIES	 VIII
BITCOIN	VIII
BITO, GBTC	IX
RIOT	X
 GOLD & MINERS	 XI
GOLD	XI
GDX & GDXJ	XII
 ETF TRADE ALERTS	 XIII
MAGNIFICENT 7+ TRADE ALERTS	XIV
CRYPTO TRADE ALERTS	XV
 BACKTESTED TRADING SYSTEM PERFORMANCES	 XVI

STOCKMARKETS

Our preferred view remains that the impulse continues, until proven otherwise, which is a break below key warning levels, with a smaller fifth wave now underway, depending on the degree of the index.

S&P500

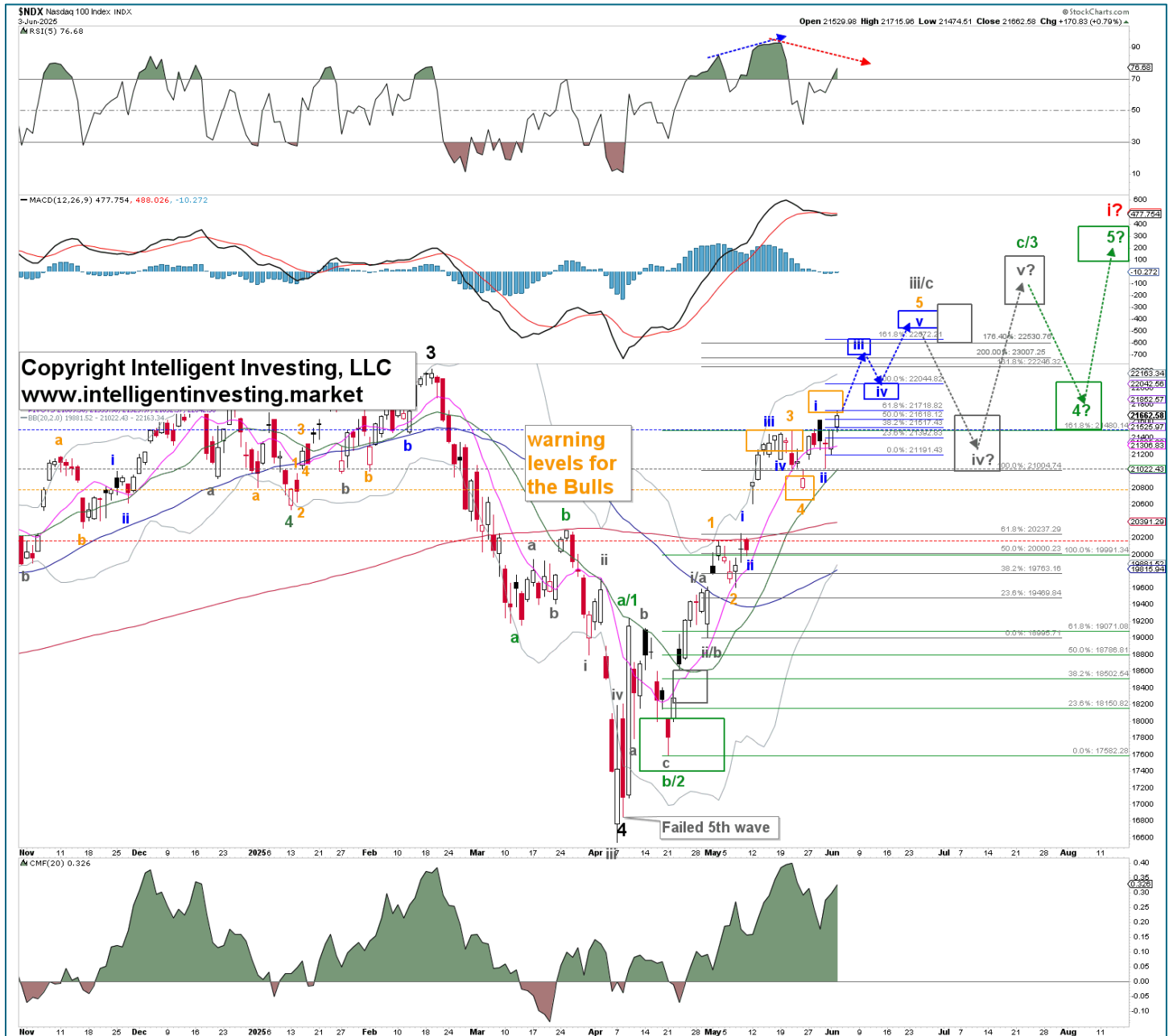
Higher prices so far, as expected from our preferred POV, so there's nothing new to say, other than raised warning levels. As such, we can essentially copy-paste from yesterday "the price action from the May 23 low works well for a (blue) W-i, ii setup, contingent upon staying above the warning levels: blue (1st warning level for the bulls) at \$5938, grey (2nd warning level) at \$5861, orange (3rd warning level) at \$5807, and red (final warning level) at \$5762. Blue W-iii can then target \$6,125+/-25, Blue W-iv \$6,000+/-25, and W-v of the then-extended orange W-5 can ideally reach \$6,150-6,200. From there, the market can decide whether to tag on the grey W-iv, v (preferred) or not. For now, we aim to ideally complete the grey W-iii/c, with a subdividing orange W-5 underway."



NASDAQ100

With the higher high on the NASDAQ and the NASDAQ100, we can abandon the alternative from yesterday and switch to the “per the preferred SP500’s EW count, it can very well extend to, in this case, the NAS 20400+/200, and NDX22600+/-200 regions,” POV, as mentioned yesterday.

This means, the price action from the May 23 low works well for a (blue) W-i, ii setup, contingent upon staying above the warning levels: blue (1st warning level for the bulls) at \$21530, grey (2nd warning level) at \$21032, orange (3rd warning level) at \$20778, and red (final warning level) at \$20177. Blue W-iii can then target \$22530+/-50, Blue W-iv \$22,000+/-50, and W-v of the then-extended orange W-5 can ideally reach \$22,800+/-100. From there, the market can decide whether to tag on the grey W-iv, v (preferred) or not. For now, we aim to ideally complete the grey W-iii/c, with a subdividing orange W-5 underway.



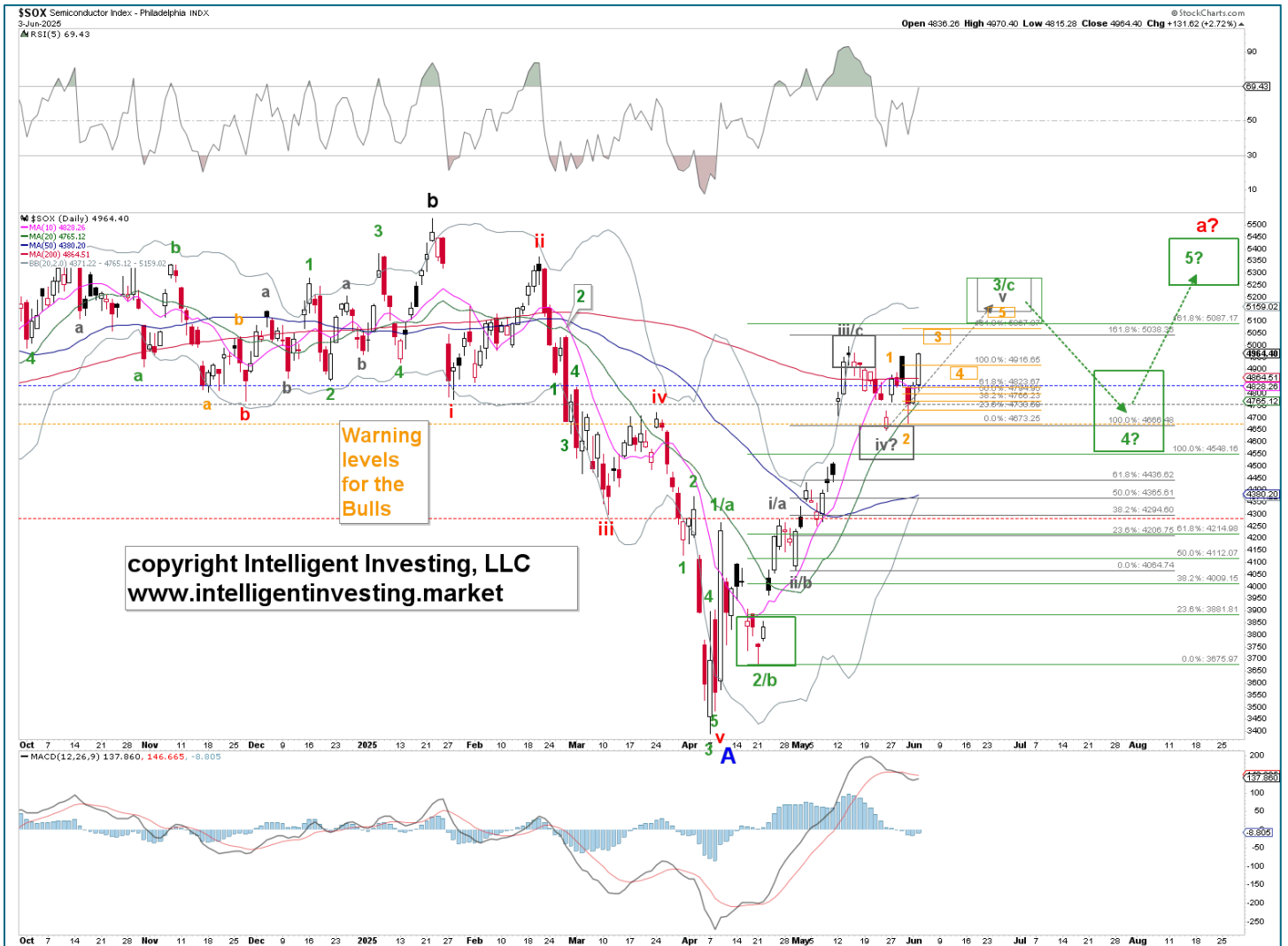
DOW JONES INDUSTRIAL AVERAGE

Not as far along as the SPX and NAS/NDX yet as it has not made a new uptrend high, but our preferred EW count for the DOW remains the same as for the SP500, with several raised warning levels: *“the price action from the May 23 low works well for a (blue) W-i, ii setup, contingent upon staying above the warning levels, which are a bit “wider” than for the SPX: blue (1st warning level for the bulls) at \$42305, grey (2nd warning level) at \$41828, orange (3rd warning level) at \$41354, and red (final warning level) at \$40376. Blue W-iii can then target \$43475+/-225, Blue W-iv \$42750+/-250, and W-v of the orange W-5 can ideally reach \$43750-4400, which is right in the ideal orange and grey target zones. From there, the market can decide whether to tag on the grey W-iv, v (preferred) or not. For now, we aim to ideally complete the grey W-iii/c, with a subdividing orange W-5 underway.”*



SEMI CONDUCTORS

It pays to be Bullish, toss out any bearish fractals (like 2015), and not to be bearish, as that requires one to shift the goal post higher continually. Thus, our preferred EW count for the SOX remains the same, with some raised warning levels: *"the price action from the May 23 low works well for a (orange) W-1, 2 setup, contingent on staying above the warning levels, ... : blue (1st warning level for the bulls) at \$4386, grey (2nd warning level) at \$4759, orange (3rd warning level) at \$4673, and red (final warning level) at \$4280. The Orange W-3 can then target \$5040+/-20, the Orange W-4 \$4900+/-20, and the W-5 of the green W-3/c can ideally reach \$5150+/-25, which is right in the ideal grey and green target zones. From there, the market can decide whether to tag on the green W-4, 5 (preferred) or not. For now, we aim to ideally complete the green W-3/c, with a subdividing grey W-v underway."*



SMALL CAPS

So far, so good, as our Bullish stance from yesterday got validated today with higher prices. Thus, our preferred EW count for the IWM (Small caps) remains the same until proven otherwise, with adjusted warning levels: *the price action from the May 23 low works well for a (grey) W-i, ii setup, contingent on staying above the warning levels, blue (1st warning level for the bulls) at \$205.55, grey (2nd warning level) at \$202.67, orange (3rd warning level) at \$199.65, and red (final warning level) at \$192.11. The Grey W-iii can then target \$215.5+/-1, the Grey W-iv \$210+/-1, and the W-v of the green W-5 can ideally reach \$218+/-2, which is right in the ideal green target zone.*



MARKET BREADTH: A/D LINES

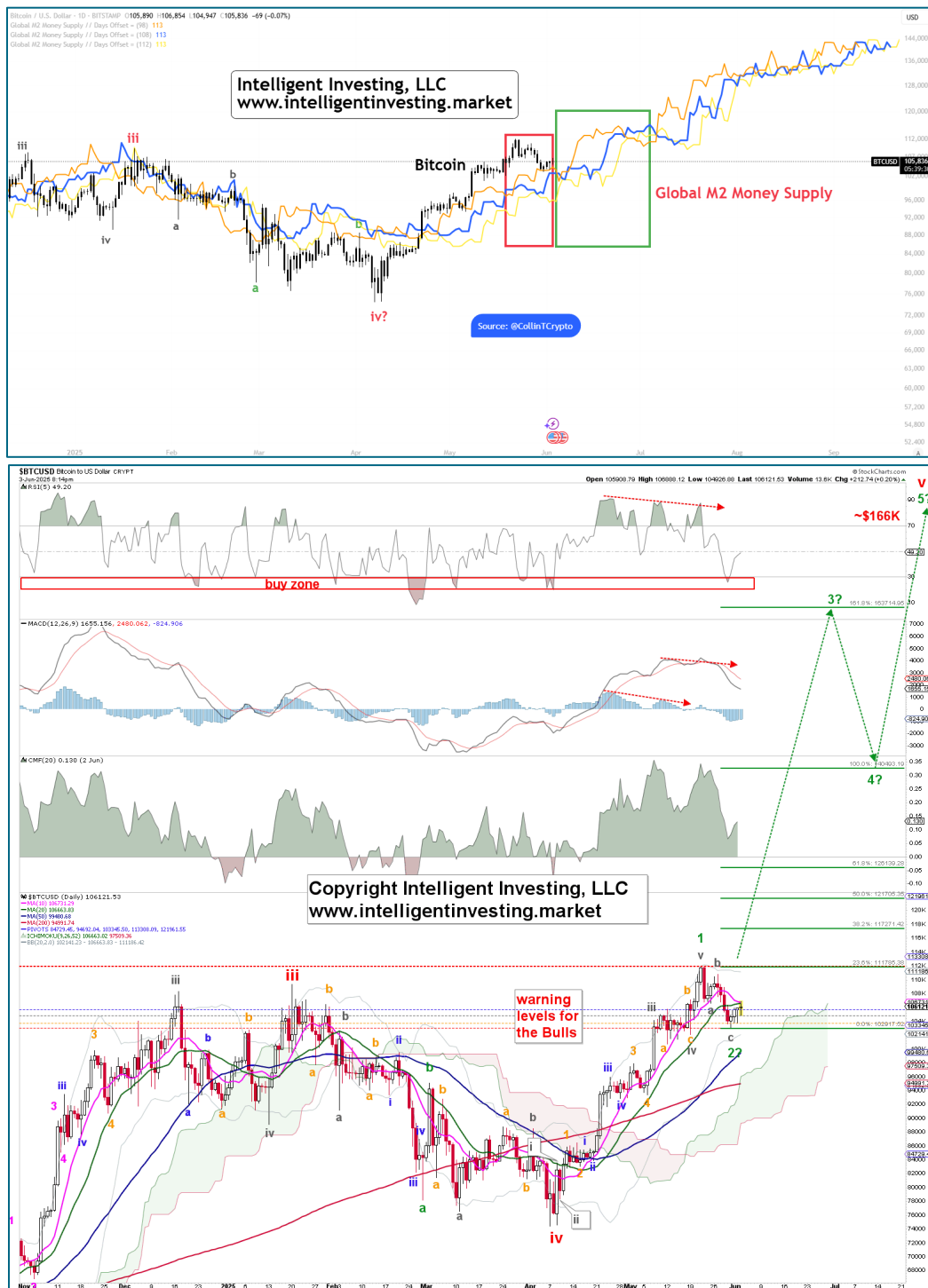
The cumulative Advancing-Declining Lines (A/D lines) for the NASDAQ 100, NYSE, and S&P 500 still appear healthy, indicating they are long and strong, which supports higher prices. They broke out above downtrend lines and reached new all-time highs (ATHs), indicated by black arrows, which is bullish. Period. If last week's lows hold, we can expect the A/D line to move higher and therewith the indexes as well.



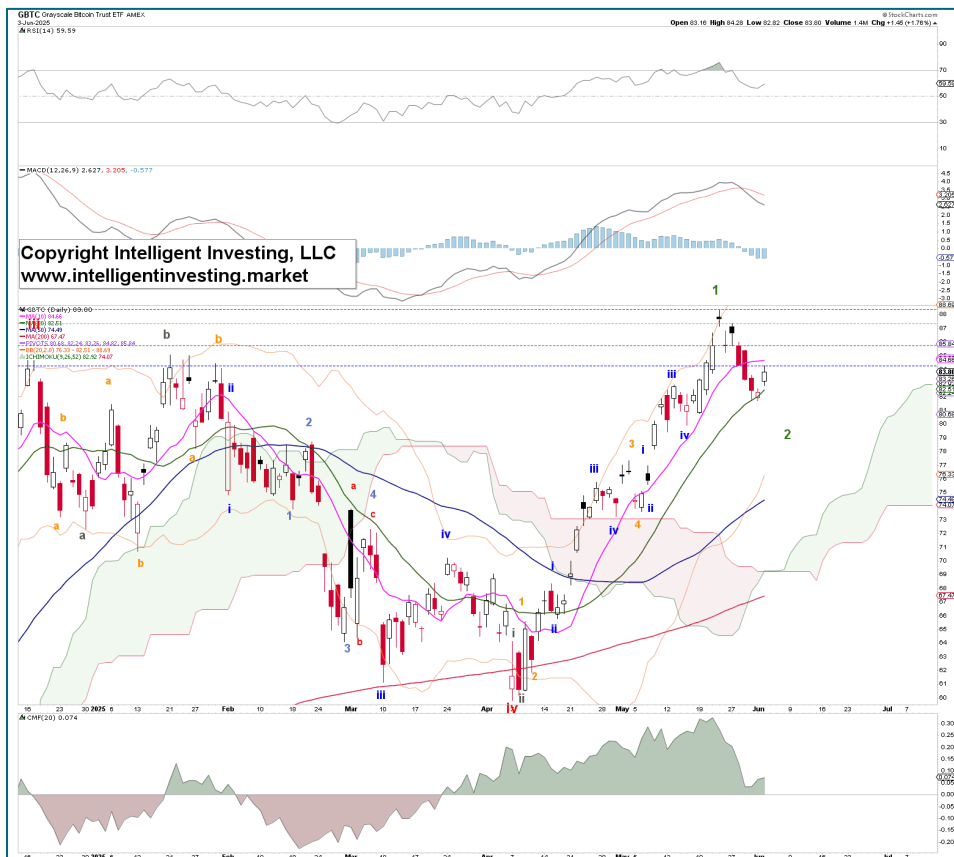
CRYPTO CURRENCIES

BITCOIN

Assuming the GMS-Bitcoin correlation holds, as it has for the past two years, the current forecasted weakness is expected to conclude soon, as indicated by the red and green boxes, respectively. If BTC breaks above its recent all-time high (ATH) without first declining, it is most likely to have experienced a shallow green W-2, suggesting that the green W-4 will be deep and prolonged. The ultimate target, assuming a standard Fibonacci-based impulse pattern, points to \$163.7K for W-3, \$140.4K for W-4, and \$166.9K for W-5 of W-v (most likely the entire Bull). This aligns almost perfectly with the long-term, big-picture ideal of a Fib-based target of \$164.4K.



BITO, GBTC



The adjusted EW counts for BITO and GBTC are shown as they are now in their 2nd waves, as BTC is. BITO is in the grey W-ii, GBTC is in the green W-2. A break above the May high confirms the grey/green 3rd wave. We haven't added it to the chart just yet, as we have no confirmation that the 2nd wave is completed. But, as mentioned yesterday, *"how deep the correction goes is not the real issue. The key is to see the forest for the trees: prepare for the most likely outcome: red W-iii. With, of course, prudent risk levels: the April lows at worst, and the April highs at best."* If BTC can target approximately \$165,000 in this Bull Market, we should expect BITO to reach roughly \$32-35, depending on the dividend distribution, which was \$1 per share for June. GBTC has no monthly dividends and requires no adjustment. It could target approximately \$140 during this cycle, which is expected to end in late November. That means there are only ~5 more months left in this cycle, while ~30 months have already passed, and still very few are interested in Bitcoin...

RIOT

Today marked a strong follow-through day for the crypto mining company, adding credibility to the evidence of the green W-2 completion. As a result, we can now apply the Bullish warning levels: blue at \$8.49, gray at \$8.07, orange at \$6.96, and red at \$6.19. Remember, these warning levels help us evaluate the likelihood that the EW count shown, in this case bullish, will persist. Blue indicates high odds, while red signifies that the wave count is invalid. Thus, blue = radar lock. Grey = proverbial shot across the bow. Orange = first hit, taking in water. Red = second hit, sinking to the bottom.



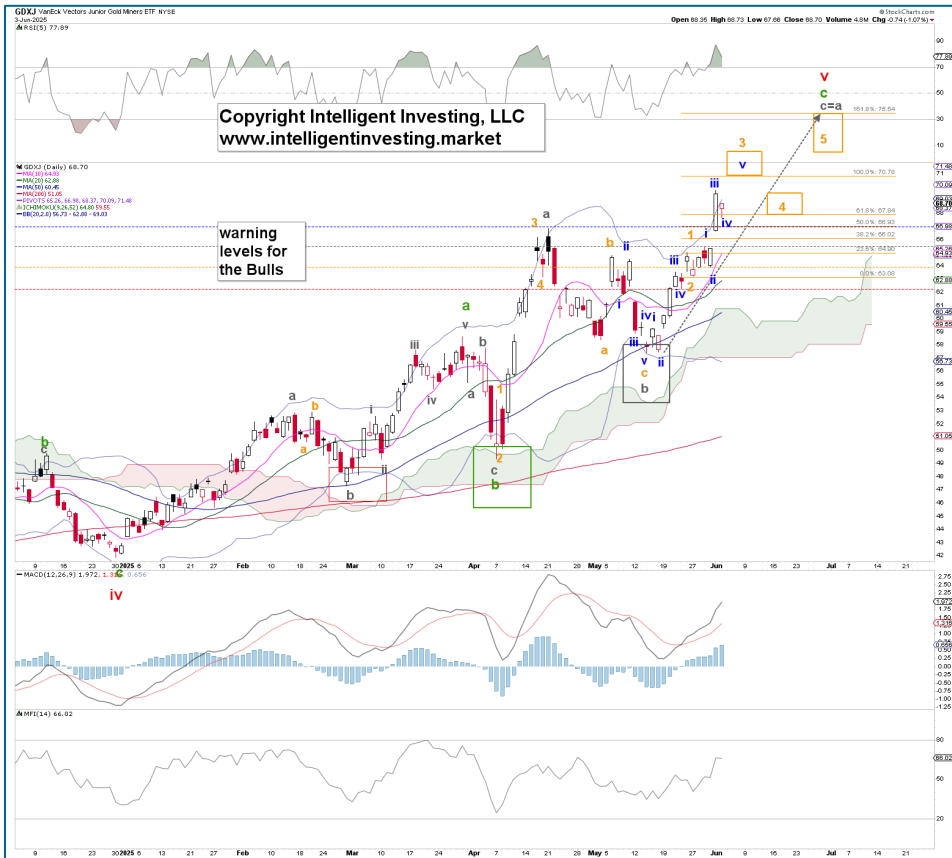
GOLD AND MINERS

GOLD

Our preferred view for GLD has been that it “... remains on track for an impulse to ideally \$322-\$330..., contingent on holding above the mid-May low at \$291.78, ...” However, we view GOLD in potentially a different boat, with an (irregular) b-wave underway. See below. It can reach as high as \$3650, which will allow GLD to reach its upside target. Why? There are enough waves in place from the November 2024 low into the recent ATH to consider the red W-v of the black W-4 complete. Since 4th waves are often flats or triangles, it makes sense to allow for an (irregular) flat correction as shown. Thus, contingent on holding above at least last week's low and especially the red W-a low, we can allow for higher prices. Below those levels and the red W-c down to \$ 2800 ± 100 is the most likely scenario.



GDX and GDXJ



We continue to expect GDXJ to reach \$76+/-1 for the orange W-5, which is where the grey W-c = W-a, contingent on holding above the warning levels: \$67, \$65.5, \$64 and \$63.5. However, we may be forming an ending diagonal, which will mean the 3rd, 4th and 5th wave will not travel the full distance as in a standard impulse, so we have lowered the target zones.

Using GDX for our bigger picture, we also expect it to reach the ideal upside target of roughly \$60-65, contingent on holding above it was warning levels: \$51.65, \$49.34, \$40.65, \$45.10.

Thus, despite today's pullback, which is most likely a smaller (blue) W-iv, as seen in the GDXJ daily chart, we see no reason to change our bullish tune.



ETF TRADE ALERTS*

- Short-term System (EoD): Hold time is days to weeks. The trading signal is updated at the EoD.
- Intermediate-term System (EoW): Hold time is weeks to months. The trading signal is updated at the EoW.
- Long-term System (EoM): Hold time is months to years. The trading signal is updated at the EoM.

Green = BUY or SELL, Purple = Open Position (HOLD), Yellow = prior action (BUY or SELL), White = Stay in cash

DOW JONES* (DIA, other ETFs are DDM, UDOW)

- Short-term HOLD the long position bought 05/27 (signal given at \$42349.11). UP 0.5%.
- Intermediate-term On 05/30: HOLD the long position bought 05/09 (signal given at \$41249). UP 2.5%.
- Long-term On 05/30: Stay in cash and wait for a new signal.

NDX* (QQQ, other ETFs are QLD, TQQQ)

- Short-term HOLD the position bought 05/27 (signal given at \$21414.99). UP 1.3%.
- Intermediate-term On 05/30: HOLD the position bought 05/02 (signal given at \$20102.61). UP 6.2%.
- Long-term On 05/30: BUY a long position (signal given at \$21340.9).

S&P500* (SPY, other ETFs are SSO, SPXL)

- Short-term HOLD the position bought 05/27 (signal given at \$5921.55). UP 0.9%.
- Intermediate-term On 05/30: HOLD the position bought 05/02 (signal given at \$5686.67). UP 4.0%.
- Long-term On 05/30: BUY a long position (signal given at \$5911.69)

SEMI-CONDUCTORS* (SOXX, other ETFs are USD, SOXL).

- Short-term HOLD the long position bought 06/02 (signal given at \$4829.16). UP 2.85%.
- Intermediate-term On 05/30: HOLD the long position bought 05/09 (signal given at \$4466.50). UP 6.5%
- Long-term On 05/30: Stay in cash and wait for a new signal.

S&P600 Small Cap* (IWM, other ETFs are UWM, TNA).

- Short-term BUY a long position (signal given at \$1299.91).
- Intermediate-term On 05/30: HOLD the long position bought 05/16 (signal given at \$1322.39) DOWN 2.9%.
- Long-term On 05/30: Stay in cash and wait for a new signal.

Ethereum* (ETHE/SETH)

- Short-term BUY an ETHE position (signal given at \$21.80).
- Intermediate-term On 05/30: HOLD the ETHE position bought 05/09 (signal given at \$19.39). UP 9.9%.
- Long-term On 05/30: Stay in cash and wait for a new signal.

Bitcoin* (IBIT/BITI)

- Short-term Stay in cash and wait for a new signal.
- Intermediate-term On 05/31 HOLD the IBIT position bought 04/25 (signal given at \$54.27). UP 9.5%
- Long-term On 05/30: BUY IBIT (signal given at \$59.46).

MAGNIFICENT 7+ TRADE ALERTS*

- Short-term System (EoD): Hold time is days to weeks. The trading signal is updated at EoD.
- Intermediate-term System (EoW): Hold time is weeks to months. The trading signal is updated at EoW.
- Long-term System (EoM): Hold time is months to years. The trading signal is updated at EoM.

Green = BUY or SELL, Purple = Open Position (HOLD), Yellow = prior action (BUY or SELL), White = Stay in cash

AAPL*

- Short-term BUY an long position (signal given at \$203.38).
- Intermediate-term On 05/30: Stay in cash and wait for a new buy signal.
- Long-term On 05/30: Stay in cash and wait for a new buy signal.

AMZN*

- Short-term HOLD the position bought 05/27 (signal given at \$205.78). UP 0.1%
- Intermediate-term On 05/30: HOLD the long position bought 05/16 (signal given at \$205.59). DOWN 0.3%.
- Long-term On 05/30: BUY a position (signal given at \$205.01)

GOOG*

- Short-term SELL the position bought 05/13 (signal given at \$160.89). UP 4.3%.
- Intermediate-term On 05/30: HOLD the long position bought 05/16 (signal given at \$167.43). UP 3.2%.
- Long-term On 5/30: Stay in cash and wait for a new buy signal.

META*

- Short-term HOLD the position bought 05/27 (signal given at \$641.62). UP 4.1%.
- Intermediate-term On 05/30: HOLD the position bought 05/02 (signal given at \$597.02). UP 8.5%.
- Long-term On 05/30: BUY a position (signal given at \$647.59).

MSFT*

- Short-term HOLD the position bought 04/24 (signal given at \$386.59). UP 19.9% (!)
- Intermediate-term On 05/30: HOLD the position bought 05/02 (signal given at \$434.48). UP 6.0%.
- Long-term On 05/30: BUY a position (signal given at \$460.36)

NFLX*

Short-term HOLD the position bought 05/13 (signal given at \$1138.44). UP 7.0%.
Intermediate-term On 05/30: HOLD the position bought 04/25 (signal given at \$1101.53). UP 9.6%
Long-term On 04/30: HOLD the remaining 1/4 of the full position bought 12/30/'22 (!) and MOVE the stop to \$564.11.
Winning trade. (old trading system's signals)

NVDA*

Short-term HOLD the position bought 04/24 (signal given at \$106.43). UP 33.0% (!)
Intermediate-term On 05/30: HOLD the position bought 05/02 (signal given at \$114.50). UP 18.0%
Long-term On 05/30: BUY a position (signal given at \$135.13).

TSLA*

Short-term HOLD the position bought 04/24 (signal given at \$259.51). UP 33.1% (!)
Intermediate-term On 05/30: HOLD the position bought 05/02 (signal given at \$287.21). UP 20.6%
Long-term On 05/30: BUY a position (signal given at \$346.46)

CRYPTOS TRADE ALERTS *

- Short-term System (EoD): Hold time is days to weeks. The trading signal is updated at EoD.
- Intermediate-term System (EoW): Hold time is weeks to months. The trading signal is updated at EoW.
- Long-term System (EoM): Hold time is months to years. The trading signal is updated at EoM.

Green = BUY or SELL, Purple = Open Position (HOLD), Yellow = prior action (BUY or SELL), White = Stay in cash

BinanceCoin (BNB)*

- Short-term System *Stay in cash and wait for a new buy signal.*
- Intermediate-term system *On 06/01: HOLD the position bought 05/09 (signal given at \$650.98). UP 1.1%.*
- Long-term System *On 05/31: Stay in cash and wait for a new buy signal.*

Bitcoin (BTC)*

Short-term System *Stay in cash and wait for a new buy signal.*

- Intermediate-term System *On 06/01: HOLD the position bought 04/27 (signal given at \$93777.44). UP +12.4%*
- Long-term System *On 05/31: HOLD the remaining 1/4 of the full position bought 03/31/'23 (!) and MOVE the stop to \$61179.58. Winning trade (per the old trading system).*

ChainLink (LINK)*

- Short-term System *Stay in cash and wait for a new buy signal.*
- Intermediate-term system *On 06/01: SELL the position bought 05/11 (signal given at \$17.10). DOWN 17.6%.*
- Long-term System *On 05/31: Stay in cash and wait for a new buy signal.*

Ethereum (ETH)*

- Short-term System *BUY a position (signal given at \$2622.80)*
- Intermediate-term system *On 06/01: HOLD the position bought 05/11 (signal given at \$2514.75). UP 0.9%*
- Long-term System *On 05/31: Stay in cash and wait for a new buy signal.*

Solana (SOL)*

- Short-term System *Stay in cash and wait for a new buy signal.*
- Intermediate-term System *On 06/01: HOLD the position bought 05/04 (signal given at \$143.99). UP 9.1%*
- Long-term System *On 05/31: Stay in cash and wait for a new buy signal.*

TRON (TRX)*

- Short-term System *Stay in cash and wait for a new buy signal.*
- Intermediate-term System *On 06/01: HOLD the position bought 04/13 (signal given at \$0.255). UP 5.9%.*
- Long-term System *On 05/31: HOLD the remaining 1/4 of the full position bought 03/31/'23 (!) and MOVE the stop to \$0.112. Winning trade(per the old trading system).*

*BACKTESTED TRADING SYSTEM PERFORMANCES

Our new trading systems work best by applying the principle of compounding, which involves reinvesting some or all of your profits in the next trade. The more you compound, the better the returns will be. Please review the table below.

Please do not trade positions bought without the system's signals using the system's trading signals. Additionally, please refrain from entering a position when the trade is already in progress; wait for a new trading signal.

LONG-ONLY TRADING SYSTEM RETURNS FOR THE INDEXES*						
Time frame	Percentage (%) of equity			Total Trades	Average Gain	Average Loss
	100	50	25			
S&P500 (SPX)*						
Short-term (Daily)	3217.5%	530.3%	155.9%	964	2.9%	-1.2%
Intermediate-term (Weekly)	3272.3%	566.3%	166.4%	204	8.4%	-2.3%
Long-term (Monthly)	4782.6%	747.4%	207.2%	32	24.6%	-6.1%
NASDAQ100 (NDX)**						
Short-term (Daily)	1243.3%	305.1%	115.6%	623	4.7%	-1.9%
Intermediate-term (Weekly)	5128.5%	683.8%	212.1%	111	12.0%	-4.4%
Long-term (Monthly)	7511.4%	1422.7%	456.0%	20	83.0%	-8.1%
DOW JONES INDUSTRIAL AVERAGE (INDU)***						
Short-term (Daily)	2153757.8%	19451.0%	1411.0%	1804	3.5%	-1.3%
Intermediate-term (Weekly)	202979.1%	6350.4%	789.0%	376	9.7%	-2.5%
Long-term (Monthly)	82893.5%	4340.8%	660.3%	79	26.7%	-5.8%
*Since inception (March 1957) **Since inception (January 1985) ***Since inception (May 1896)						
*BACKTESTING PERFORMED ON DATA SINCE INCEPTION AND ENDING 03/24/2025						

LONG-ONLY TRADING SYSTEM RETURNS FOR BITCOIN AND ETHEREUM UNTIL 03/30/2025				
Time frame (Resolution)	Percentage (%) of equity			Total Trades
	100	50	25	
Bitcoin (BTC)*				
Short-term (Daily)	1023332%	40489%	3524%	272
Intermediate-term (Weekly)	3508730%	112493%	7821%	33
Long-term (Monthly)	508225%	110685%	23956%	5
Ethereum (ETH)**				
Short-term (Daily)	145212%	13920%	1912%	205
Intermediate-term (Weekly)	274728%	36114%	5377%	30
Long-term (Monthly)	10507%	7693%	3340%	9
*Since data available (August 2011) via BITSTAMP		**Since data available (August 2015)		

LONG-ONLY TRADING SYSTEM RETURNS THE MAG 7+ STOCKS*						
Time frame	Percentage (%) of equity			Total Trades	Average Gain	Average Loss
	100	50	25			
AAPL						
Short-term (Daily)	118822.7%	6407.2%	861.6%	627	12.0%	-3.9%
Intermediate-term (Weekly)	412282.2%	14639.8%	1512.7%	123	31.7%	-7.3%
Long-term (Monthly)	41758.8%	6848.5%	1309.6%	25	153.8%	-16.1%
AMZN						
Short-term (Daily)	48422.1%	3795.6%	642.7%	415	10.9%	-3.5%
Intermediate-term (Weekly)	58009.2%	5789.2%	1027.3%	83	45.9%	-6.5%
Long-term (Monthly)	46366.2%	6948.4%	1478.8%	16	251.5%	-11.3%
GOOG						
Short-term (Daily)	164.4%	66.4%	44.6%	190	4.2%	-2.1%
Intermediate-term (Weekly)	1221.1%	582.4%	283.6%	32	13.4%	-5.5%
Long-term (Monthly)	2836.9%	1145.2%	503.2%	6	63.3%	-3.7%
META						
Short-term (Daily)	241.4%	113.7%	52.4%	200	8.3%	-2.9%
Intermediate-term (Weekly)	1889.1%	441.0%	146.4%	34	25.8%	-4.0%
Long-term (Monthly)	411.9%	171.4%	76.8%	6	72.1%	-6.5%
MSFT						
Short-term (Daily)	2061.9%	507.1%	163.9%	616	6.7%	-2.6%
Intermediate-term (Weekly)	5556.8%	1104.3%	303.1%	127	23.7%	-5.7%
Long-term (Monthly)	46873.3%	9309.7%	2050.4%	22	388.5%	-7.8%
NFLX						
Short-term (Daily)	6118.4%	1115.8%	291.3%	333	11.0%	-4.1%
Intermediate-term (Weekly)	24277.7%	2866.2%	569.7%	68	37.8%	-9.4%
Long-term (Monthly)	13839.4%	2102.5%	504.2%	10	130.9%	-9.6%
NVDA						
Short-term (Daily)	49642.0%	3715.0%	618.1%	380	13.6%	-4.9%
Intermediate-term (Weekly)	62423.8%	5799.7%	927.5%	85	47.5%	-9.5%
Long-term (Monthly)	66754.2%	8924.9%	1615.8%	14	195.1%	-18.8%
TSLA						
Short-term (Daily)	4094.1%	1026.6%	298.6%	215	19.1%	-4.5%
Intermediate-term (Weekly)	5062.7%	1342.1%	408.5%	46	68.2%	-7.5%
Long-term (Monthly)	1943.1%	1176.6%	540.4%	14	329.0%	-16.2%
*BACKTESTING PERFORMED ON DATA SINCE IPO AND ENDING 04/30/2025						

Past performance is no guarantee of future results. The trading systems' signals are derived from data believed to be accurate, but such accuracy or completeness cannot be guaranteed. It should not be assumed that such signals, past or future, will be profitable, equal past performance, or ensure future performance or trends, primarily since a human writes these emails and may contain errors and omissions.

THIS COPYRIGHTED MATERIAL IS INTENDED SOLELY FOR USE BY DESIGNATED RECIPIENTS. NO REPRODUCTION, RETRANSMISSION, OR OTHER USE OF THE INFORMATION OR IMAGES IS AUTHORIZED. LEGITIMATE NEWS MEDIA MAY QUOTE REPRESENTATIVE PASSAGES TO REPORT ON MY OPINIONS IN CONTEXT AND WITH FULL ATTRIBUTION. THE ANALYSIS IS DERIVED FROM DATA BELIEVED TO BE ACCURATE, BUT SUCH ACCURACY OR COMPLETENESS CANNOT BE GUARANTEED. IT SHOULD NOT BE ASSUMED THAT SUCH ANALYSIS, PAST OR FUTURE, WILL BE PROFITABLE, EQUAL PAST PERFORMANCE, OR GUARANTEE FUTURE PERFORMANCE OR TRENDS. ALL TRADING AND INVESTMENT DECISIONS ARE THE SOLE RESPONSIBILITY OF THE READER. INCLUDING INFORMATION ABOUT MANAGED ACCOUNTS, PROGRAM POSITIONS, AND OTHER INFORMATION IS NOT INTENDED TO BE A RECOMMENDATION OR SOLICITATION. FOR MORE INFORMATION, CONTACT INTELLIGENT INVESTING, LCC, AT INFO@INTELLIGENTINVESTING.MARKET. I RESERVE THE RIGHT TO REFUSE SERVICE TO ANYONE FOR ANY REASON.